



Unrivalled Productivity

Seamless integration for a simple business workflow solution



Samsung Mono Laser Printer
ML-5510ND/ML-6510ND



Unrivalled Productivity



The Samsung ML-5510ND/ML-6510ND provides hassle-free integration for a simple business workflow solution.

Delivering a business print solution that answers both simplicity and productivity needs can be a challenge, especially across today's diverse business environment. With hassle-free integration and easy-to-use functionality, the Samsung Mono Laser Printer ML-5510ND/ML-6510ND delivers unlimited productivity – simply.

With a fully modular set-up and plenty of expandability the Samsung ML-5510ND/ML-6510ND can be customised to suit your business needs.

Product Configuration





Seamless Business Integration



Offering a robust, durable and reliable design, the Samsung ML-5510ND/ML-6510ND helps your business to stay productive by delivering high availability and simple manageability.

Productivity Boosting Features

Designed with all types of users in mind, the Samsung ML-5510ND/ML-6510ND delivers user-friendly functionality that enhances productivity and maximises value. Its easy-to-use 4 line LCD control panel and numeric keypad facilitates effective operation of the device – regardless of technical ability.

For busy workgroups, a USB port on the front panel of the printer, provides the ability to easily print compatible files directly from a USB memory device – removing the need to connect to a PC.



Durable and Reliable

Its high monthly duty cycle of up to 275,000 sheets ensures the Samsung ML-5510ND/ML-6510ND can cope with the pressures of a busy office

Simple to Maintain

The Samsung User Replaceable Maintenance Kit, provides a kit of easy to install parts that require periodical replacement, removing the need for routine service visits and avoiding long periods of downtime while waiting for replacement parts or service calls.





Efficient and Economical



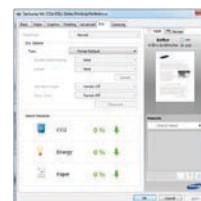
With innovative features and high capacity toner cartridges, the Samsung ML-5510ND/ML-6510ND enables your business to deliver considerable savings on your print costs.



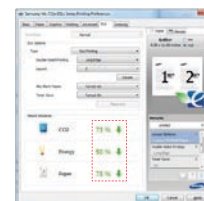
ECO-Friendly Approach

A convenient one-touch ECO button enables you to save paper (administrators can set-up options such as duplex or 2-up printing, where two pages are printed per sheet of paper) and reduce toner consumption by up to 30%.

The unique Samsung Result Simulator expands this further by providing a graphic representation of how much you can save on your Carbon Footprint, power consumption and paper usage, depending on the options you select.



ECO mode off



ECO mode on
Duplex, 2-up Printing

- Carbon Footprint
- Power Consumption
- Paper Used

Reduced TCO

Printing up to 30,000 pages per toner cartridge*, the Samsung ML-5510ND/ML-6510ND series delivers a convenient and economical office printing solution. Providing a lower cost per page and requiring fewer replacements than Standard Toner Cartridges, you can reduce your costs and improve productivity.

* High Yield 30,000 Page Toner





Productive and Convenient



By harnessing fast print speeds and convenient functions, the Samsung ML-5510ND/ML-6510ND delivers the reliable, high-quality performance that today's diverse and busy office demands.

Powerful Technology – Powerful Performance

A powerful 700MHz processor with Samsung's state-of-the-art System-On-Chip Technology delivers performance levels usually associated with enterprise level printers. While 1Gigabit LAN support enables large documents from multiple users to be received and processed quickly. This, alongside fast print speeds of up to 62ppm* (A4) and a First Print Out Time of 7.8 seconds means that, no matter what they are trying to print, users won't have to wait for their documents.

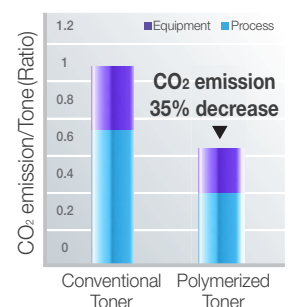
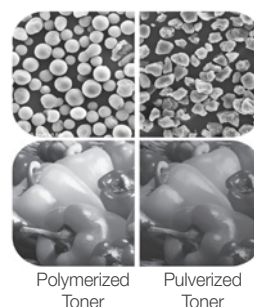
Effective Paper Handling

The Samsung ML-5510ND/ML-6510ND high quality print output makes it ideal for printing general business documents, reports and presentations to the highest standards. It offers a wide range of paper handling capabilities, including duplex as standard, higher than average paper capacity, heavier media compatibility and full range of finishing options. Both the main tray and multi-purpose tray can manage envelopes, card stock and other special media, so users can achieve the high quality documents they need, regardless of the type of media they use.



High Quality Output

Samsung's Polymerized Toner produces sharper images and lines, thanks to smaller, more uniform toner particles compared to traditional toner. The improved print resolution and glossier finish enables you to easily produce professional looking documents. As the printer transfers Polymerized Toner to the paper in a thinner uniform layer, waste toner is reduced and a lower fusing temperature is required, helping to reduce power consumption.



Effective Solutions



Managing an effective print environment requires much more than high-quality network print devices, today's business demands productive solutions that answer specific needs within their business. Samsung's extensive range of print and document management solutions do exactly that – combining quick, high quality print with seamless network integration and compliance, all supported by the very latest device, workflow and security functionality.

Billing and Job Accounting

Many administrators require in-depth information on the volumes of printing performed by each user on any device. CounThru 2 is a managed print service from Samsung that provides the insight required for businesses (or IT Partners on their behalf) to remotely manage and optimise a distributed system of network printers across their enterprise, for full financial and operational reporting with minimal effort.

Out-of-the Box Solutions

Features within the Samsung ML-5510ND/ML-6510ND enable businesses to simplify their workflow processes right out of the box. Samsung's Barcode[†] printing solution integrates seamlessly into enterprise applications, with barcode fonts that improve the efficiency of automatic data collection processes and lower associated costs.

A Secure Job-Release function is also provided at no additional cost. For enabled users, documents are only released for printing when they enter their pin code using the numeric keypad on the device. This removes the issue of sensitive or confidential information being left on the printer.

† Barcode Solution is available as an option (SOL-BPSV1)

Added-value solutions

To help you get the most from your printer, Samsung Solutions add layers of capability. Providing device management, and workflow solutions that put you firmly in control of your print environment.



- Samsung SyncThru™ Web Service uses a familiar web interface to remotely manage your printer devices – enabling you to check status information, customise settings and receive email alerts all from the comfort of your desk.



- SyncThru™ Web Admin gives you the ability to discover, manage and report all Samsung and other compatible devices on the network. Users can also directly access the embedded SyncThru™ Web Service on individual devices.



- CounThru™ 2 is a managed print service from Samsung that delivers the insight required for businesses to remotely manage and optimise a distributed system of network printers across their enterprise.



- Samsung SmarThru™ Office is a powerful document management application for office users. It creates, stores and edits scanned images and delivers them directly to applications or folders on the user's PC. It also offers a range of document management and editing features for easy use with Samsung multifunction devices.



- Easy Print Manager enables you to locate and manage all your Samsung device and print settings from one simple location right down to ordering supplies.



- Added Security with a built-in HDD/Internal Flash Drive delivering additional print features, such as Secure Printing, Delayed Printing and Job Store.



Product Configuration Options

	Basic	Advanced	Full Featured
Configuration	<ul style="list-style-type: none"> Main Set with 520 Sheet Paper Tray 520 Sheet Paper Tray - ML-S6510A/SEE Short Stand - ML-DSK65S/SEE 	<ul style="list-style-type: none"> Main set with 520 Sheet Paper Tray 4 x 520 Sheet Paper Trays ML-S6510A/SEE Short Stand - ML-DSK65S/SEE 	<ul style="list-style-type: none"> Main Set with 520 Sheet Paper Tray 2 x 520 Sheet Paper Trays - ML-S6510A/SEE 2,000 Sheet High Capacity Feeder - ML-H6510A/SEE 500 Sheet Staple Finisher - ML-OCT65/SEE
Max. Input Paper Capacity	520 (CST) x 2 + 100 (MP) = 1,140	520 (CST) x 5 + 100 (MP) = 2,700	520 (CST) x3 + 100 (MP) + 2,000 (HCF) =3,660
Target User	High volume office printing	High Volume Printing + Various Paper Types	High Volume Printing & In-house Finishing + large sized job
Configuration			

Options and Supplies

				
520 Sheet Paper Tray ML-S6510A/SEE	2,000 Sheet High Capacity Feeder ML-H6510A/SEE	Short Stand ML-DSK65S/SEE (Comes standard with High Capacity Feeder - ML-H6510A/SEE)	500 Sheet Staple Finisher ML-OCT65/SEE	400-sheet 4 Bin Mailbox ML-MBT65/SEE
				
Wireless Network Card ML-NWA65L/SEE	Parallel Connector ML-PAR100/SEE	160GB Hard Disk Drive ML-HDK465/SEE	Memory Modules (512MB) ML-MEM170/SEE	Black Toner Cartridge 10,000 Toner MLT-D309S/ELS
				
Black Toner Cartridge 30,000 High Yield Toner MLT-D309L/ELS	80,000 Page Imaging Unit MLT-R309/ELS	Maintenance Kit ML-PMK65K/SEE (220V)	50-sheet Staple Cartridge SCX-STP000/SEE	Barcode Solution SOL-BPSV1/SEE



Product Specifications

	ML-5510ND/SEE	ML-6510ND/SEE
Print		
Speed (Mono)	Up to 52ppm in A4 (55ppm in Letter)	Up to 62ppm in A4 (65ppm in Letter)
Resolution	Up to 1,200 x 1,200 dpi effective output	
First Print Out Time (Mono)	As fast as 7.8 seconds	
Emulation	PCL5e, PCL6, KS/KSSM, KS5895, IBM ProPrinter, EPSON, PostScript3, PDF Direct V1.7, XPS v1.0	
Duplex	Built-in	
Paper Handling		
Input Capacity and Types	520-sheet Cassette, 100-sheet Multi-Purpose Tray / Max 3,660 Sheet Paper Capacity	
Output Capacity and Type	500-sheet Face-Down	
Media Size	76mm x 127mm (3" x 5") ~ 216mm x 356mm (8.5" x 14"), (Envelope: Monarch, No10, DL, C5, C6, No9)	
Media Type	Printer Default, Plain Paper, Thick Paper, Thin Paper, Bond Paper, Colour Paper, CardStock, Labels, Transparency, Envelope, Pre-printed, Recycled Paper, Archive, Extra Thick	
Envelope Capacity	50 sheets from Cassette and 50 sheets from optional 1st Second Cassette, (Max. 100 sheets)	
General		
Processor	Samsung 700MHz processor	
Memory/Storage	256MB (Max. 768MB) & Optional 160GB Hard Disk Drive	
OS Compatibility	Windows 2000/XP (32/64bits)/Vista (32/64bits)/2003 Server (32/64bits)/2008 Server (32/64bits)/7 (32/64bits) /2008 Server R2 (64bits) Various Linux OS: RedHat Enterprise Linux WS 4, 5 (32/64 bit) Fedora 4, 5, 6, 7, 8, 9, 10, 11, 12 (32/64 bit) SuSE Linux 10.0, 10.1 (32 bit) OpenSuSE 10.2, 10.3, 11.0, 11.1, 11.2 (32/64 bit) Mandriva 2005, 2006, 2007, 2008, 2009, 2009.1 (32/64 bit) Ubuntu 5.04, 5.10, 6.06, 6.10, 7.04, 7.10, 8.04, 8.10, 9.04, 9.10 (32/64 bit) SuSE Linux Enterprise Desktop 10, 11 (32/64 bit) Debian 4.0, 5.0 (32/64 bit) Mac OS 10.3 ~ 10.6UNIX OS: Sun Solaris 9,10 (x86, SPARC) HP-UX 11.0, 11i v1, 11i v2, 11i v3 (PA-RISC, Itanium) IBM AIX 5.1, 5.2, 5.3, 5.4	
Interface	Ethernet 10/100/1000 Base TX, High Speed USB 2.0, Host USB 2 Port (Rear 1 Port & Front 1 Port), IEEE 1284B Parallel connector (Option), 802.11 b,g, n wireless network (Option)	
Noise Level	Less than 56dBA (Printing), Background Noise Only (Less than 30dBA) (Standby)	Less than 58dBA (Printing), Background Noise Only (Less than 30dBA) (Standby)
Duty Cycle, Monthly	275,000 sheets	
Dimension (WxDxH)	464mm x 540mm x 420mm	
Weight	34.8kg (Inc. Imaging Unit/Toner/WTB), 31.2kg (exc. Imaging Unit/Toner/WTB)	
Power Consumption	820W(Active)/100W(Ready)/10W(Sleep)	900W(Active)/120W(Ready)/10W(Sleep)

Consumables

Yield	Standard: Average Cartridge Yield 10,000 standard pages High Yield: Average Cartridge Yield 30,000 standard pages (ships with 10,000 pages Starter Toner Cartridge) Imaging Unit: Average Yield 80,000 standard pages; Declared Cartridge Yield in accordance with ISO/IEC 19752.
Type	2-piece Cartridge (Toner and Imaging Unit (Drum Unit))
Codes	Toner Cartridge: MLT-D309L/ELS -10,000 Pages., MLT-D309S/ELS - 30,000 Pages, Imaging Unit: MLT-R309/ELS - 80,000 Pages

Options

Options	520 Sheet Paper Tray - ML-S6510A/SEE 2,000 Sheet High Capacity Feeder - ML-H6510A/SEE Short Stand - ML-DSK65S/SEE 512mb Memory - ML-MEM170/SEE 160GB Hard Disk Drive - ML-HDK465/SEE 500 Sheet Staple Finisher - ML-OCT65/SEE 400 Sheet 4 Bin Mailbox - ML-MBT65/SEE Wireless Network Card - ML-NWA65L/SEE IEEE 1284B Parallel Connector - ML-PAR100/SEE Barcode Solution - SOL-BPSV1/SEE
---------	--



For more information, please visit www.samsung.com/uk/printer