

SAMSUNG

Superior Printing Performance – without the hassle

The high performance workgroup printer



Samsung Mono Laser Printer
ML-4510ND/ML-5015ND



Unrivalled Productivity



Today, a business printer is much more than just a printer; it's a high performance, productivity boosting business tool, and you need a printer you can rely on.

It's a serious business, running a company. So you need to know that everything is under control and running smoothly, and that the investments you make add real value.

Offering outstanding productivity and versatility, the Samsung Mono Laser Printer ML-4510ND/ML-5015ND series effortlessly combines performance with simplicity to create the ideal workgroup printer.

Product Configuration





Hassle-free business printing

Packed with performance and functionality, yet still small and quiet enough to fit into any workgroup, the Samsung ML-4510ND/ML-5015ND series has been designed to ensure that your valuable time isn't wasted dealing with 'printer issues'.



Reliable Paper Handling

The high monthly duty cycle of up to 200,000¹ sheets ensures that the Samsung ML-4510ND/ML-5015ND series copes easily with the pressures of a busy workgroup or office.



Ease of Use

Designed with all types of users in mind, the Samsung ML-4510ND/ML-5015ND series delivers user-friendly functionality that enhances productivity and maximises value. The simple to use 4.3" touch screen² or 4-line LCD control panel and numeric keypad³ offer access to a wide array of features and settings, regardless of technical ability, and one touch of the ECO Print Button saves paper and reduces toner consumption by up to 30%.

For busy workgroups, low noise levels keep the distraction to a minimum, while a USB port on the front panel⁴ of the printer enables users to quickly print compatible files⁵ directly from a USB memory device – without the need to connect to a PC.



1: ML-4510ND supports up to 150,000, all other models support up to 200,000 sheets
 2: ML-5015ND only
 3: ML-4510ND models only
 4: ML-5015ND models only
 5: Includes PRN (with suitable driver support), BMP, TIFF, JPEG and PDF file types

ML-4510ND

ML-5015ND



Economy as standard



Designed with economic printing in mind, the Samsung ML-4510ND/ML-5015ND series delivers the savings your budget needs with a range of innovative features and consumables.

Planet-friendly Printing

With just one touch of the convenient one-touch ECO setting, users can select options such as automatic duplex or 2-up printing, where two pages are printed per sheet of paper. Enabling them to save paper and reduce their toner consumption by up to 30%.

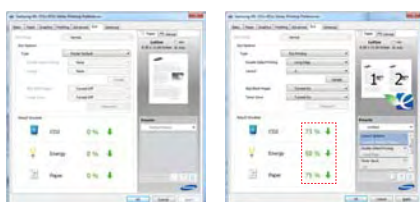
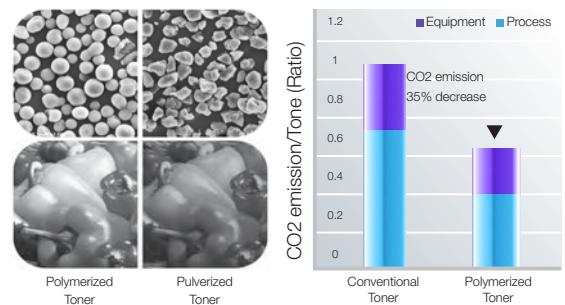
The unique Samsung Result Simulator expands this further by providing a graphic representation of how much you can save on your CO2 emissions, power consumption and paper usage, depending on the options you select.



Pocket-friendly Technology

Samsung's Polymerized Toner produces sharper images and lines, thanks to smaller, more uniform toner particles compared to traditional toner. The improved print resolution and glossier finish enables you to easily produce professional looking documents. The unique format of the toner enables the printer to transfer the print onto the paper in a thinner, more uniform layer. This reduces waste and requires a lower fusing temperature than standard, reducing the cost per page and overall power consumption.

By separating the toner and drum cartridge, Samsung has enabled users to reduce TCO even further by replacing the drum unit only when required, rather than with every new toner cartridge. Add to this the extra-high capacity toner cartridge, and you have a truly economical office printing solution.



ECO mode off

ECO mode on
Duplex, 2-up Printing

- Carbon Footprint : Reduce 73%
- Power Consumption : Reduce 50%
- Paper Used : Reduce 75%





Performance at its best



Utilising the latest technology, the Samsung ML-4510ND/ML-5015ND series delivers the high-quality, productivity boosting print performance your workgroups demand.

Powerful Performance

A 600 MHz dual-core processor with Samsung's state-of-the-art System-On-Chip Technology delivers powerful performance levels, while 1 Gbit LAN support and memory expandable up to 768 MB⁶ enables large documents to be received and processed quickly from multiple users. This, alongside fast print speeds of up to 48 ppm⁷ (A4) and a First Print Out Time of less than 7 seconds means that, no matter what they are trying to print, users won't have to wait for their documents.



	Samsung ML-4510/5015	Competitor A	Competitor B
FPOT (Ready)	7 seconds	8.5 seconds	7.5 seconds
CPU	600 MHz Dual Core	540 MHz	600 MHz
N/W	1 Gbit	1 Gbit	10/100 Mbit (1 Gbit Optional)
Test Result	86 seconds	225 seconds	176 seconds

* Test Result from Samsung QA Team

Impressive Capabilities

The Samsung ML-4510ND/ML-5015ND series offers a wide range of paper handling capabilities, including duplex as standard, higher than average paper capacity (up to 2,700 sheets at 80g/m²)⁸, heavier media compatibility and full range of finishing options. Both the main tray and multi-purpose tray can manage envelopes, card stock and other special media, so users can achieve the high quality documents they need, regardless of the type of media they use. For users with more specialised needs there is a full range of paper handling options available including additional paper cassette feeders, stapler finisher, and mailbox are available for the ML-5015ND.



6: ML-5015ND models only, ML-4510ND: max 640 MB
 7: ML-4510ND: 43 ppm (A4), ML-5015ND: 48 ppm (A4)
 8: ML-5015ND models only, ML-4510ND: max 1140 sheets

Effective Solutions



Managing an effective print environment requires much more than high-quality network print devices, today's business demands productive solutions that answer specific needs within their business. Samsung's extensive range of print and document management solutions do exactly that – combining quick, high quality print with seamless network integration and compliance, all supported by the very latest device, workflow and security functionality.

Device Management



- A Secure Pull-Printing function is provided at no additional cost. For enabled users, documents are only released for printing when they enter their pin code at the device. This removes the issue of sensitive or confidential information being left on the printer.



- Samsung SyncThru Web Service uses a familiar web interface to remotely manage your printer devices – enabling you to check status information, customise settings and receive email alerts all from the comfort of your desk.



- Samsung's Barcode printing solution integrates seamlessly into enterprise applications. Embedded barcode fonts within the device improve the efficiency of automatic data collection processes and lower associated costs.



- Easy Print Manager enables you to locate and manage all your Samsung device and print settings from one simple location right down to ordering supplies.



- Samsung's Managed Print Service CounThru™ enables you to remotely monitor activity, and calculate and manage the costs of your entire printer fleet



- The Samsung Universal Print Driver facilitates quick and easy printer sharing, by enabling you to print to any Samsung device without having to install a driver for every networked printer. You can dynamically search for compatible devices on the network and check their status; enabling users to only use available printers and dramatically reduce calls to the IT helpdesk.



- Samsung SyncThru™ Web Admin manages networked, single and multifunction print devices. SyncThru™ Web Admin provides increased efficiency and productivity by allowing IT administrators, support staff and users to manage, monitor and diagnose multiple printing devices remotely via a familiar Web interface.



- Samsung AnyWeb Print is a handy tool that enables you to collect and only print the information you need from the Web – reducing not only waste, but also time and energy too.



Product Configuration Options ML-5015ND

	Basic	Advanced	Full Featured
Configuration	<ul style="list-style-type: none"> Main Set with 520 Sheet Paper Tray 520 Sheet Paper Tray - ML-S6510A/SEE Short Stand - ML-DSK65S/SEE 	<ul style="list-style-type: none"> Main Set with 520 Sheet Paper Tray 4 x 520 Sheet Paper Trays ML-S6510A/SEE Short Stand - ML-DSK65S/SEE 	<ul style="list-style-type: none"> Main Set with 520 Sheet Paper Tray 2 x 520 Sheet Paper Trays - ML-S6510A/SEE 500 Sheet Staple Finisher - ML-OCT65/SEE
Max. Input Paper Capacity	520 (CST) x 2 + 100 (MP) = 1,140	520 (CST) x 5 + 100 (MP) = 2,700	520 (CST) x 5 + 100 (MP) = 2,700
Target User	High Volume Office Printing	High Volume Printing + Various Paper Types	High Volume Printing & In-house Finishing + Large Sized Job
Configuration			

Options and Supplies

				
520 Sheet Paper Tray ML-S6510A/SEE	4 Wheel Short Stand ML-DSK65S/SEE	500 Sheet Staple Finisher ML-OCT65/SEE	400 Sheet 4 Bin Mailbox ML-MBT65/SEE	Wireless Network Card ML-NWA65L/SEE (ML-5015ND Only)
				
Parallel Connector ML-PAR100/SEE	160GB Hard Disk Drive ML-HDK465/SEE (ML-5015ND Only)	Memory Module (512MB) ML-MEM170/SEE	Black Toner Cartridge 7,000 Page Toner ML-D307S/ELS	Black Toner Cartridge 15,000 Page Toner MLT-D309L/ELS
				
Black Toner Cartridge 20,000 Page Toner MLT-D307E/ELS (ML-5015ND Only)	80,000 Page Imaging Unit MLT-R307/SEE	50 Sheet Staple Cartridge SCX-STP000/SEE	Barcode Solution SOL-BPSV1/SEE	



Specifications

ML-4510ND		ML-5015ND
Print		
Speed (Monochrome)	Up to 43ppm in A4 (45ppm in Letter)	Up to 48ppm in A4 (50ppm in Letter)
Resolution	Optical: 600 x 600 / Enhanced: Up to 1200 x 1200 dpi effective output	
First Print Out Time (Monochrome)	As fast as 7 seconds	
Emulation	PCL5e, PCL6, IBM ProPrinter, EPSON, PostScript3, PDF Direct V1.7, XPS v1.0	
Duplex	Built-In	Built-In
Paper Handling		
Standard Capacity	520-sheet Cassette Tray, 100-sheet Multi Purpose Tray	
Max. Capacity	1,140 sheets	2,700 sheets
Media Size	76 x 127 mm (3" x 5") ~ 216 x 356 mm (8.5" x 14") A4, Letter, Legal, Oficio, Folio, JIS B5, ISO B5, Executive, A5, Statement, A6, Index Card Stock, Postcard, Envelope Monarch, Envelope No-10, Envelope DL, Envelope C5, Envelope C6, Envelope No 9, Custom [76 x 127 mm (3.0" x 5.0") ~ 216 x 356 mm (8.5" x 14")]	
Media Type	Plain Paper, Thin Paper, Thick Paper, Cardstock, Thicker Paper, Hole Punched, Transparency, Pre-Printed, Letterhead, Recycled, Archive, Bond, Label, Envelope, Cotton, Coloured	
General		
Processor	Samsung Dual Core 600 MHz	
Memory/Storage	128 MB (Max. 640 MB)	256 MB (Max. 768 MB)/Optional - 160 GB Hard Drive
OS Compatibility	WINDOW 2000/XP (32/64 bit)/2003 Server (32/64 bit)/Vista (32/64 bit)/2008 Server (32/64 bit)/7/2008 Server R2 [Linux] - RedHat Enterprise Linux WS 4, 5 (32/64 bit) - Fedora 5, 6, 7, 8, 9, 10, 11, 12, 13 (32/64 bit) - SuSE Linux 10.1 (32 bit) - OpenSuSE 10.2, 10.3, 11.0, 11.1, 11.2 (32/64 bit) - Mandriva 2007, 2008, 2009, 2009.1, 2010 (32/64 bit) - Ubuntu 6.06, 6.10, 7.04, 7.10, 8.04, 8.10, 9.04, 9.10, 10.04 (32/64 bit) - SuSE Linux Enterprise Desktop 10, 11 (32/64 bit) - Debian 4.0, 5.0 (32/64 bit) Mac OS X 10.3-10.6, [UNIX] Sun Solaris 9,10 (x86, SPARC), HP-UX 11.0, 11i v1, 11i v2, 11i v3 (PA-RISC, Itanium), IBM AIX 5.1, 5.2, 5.3, 5.4	
Interface	IEEE 1284b Parallel Option Connector, High Speed USB 2.0, Device 1 Port/Host 1 Port (Rear 1 Port-ML4510ND), Device 1 Port/Host 2 Port (Rear 1 Port / Front 1 Port/5015ND) 10/100/1000 Base TX, Optional Wireless Connection (Not Available on the ML-4510ND)	
LCD	16 x 4 Character LCD	4.3" Colour Touch LCD
Key	3 x 4 Numeric key, Power, ECO, Menu, OK, Cancel, Back	Power, Cancel
Noise Level	Less than 54 dBA (Sound Pressure) (Printing), Less than 30.0 dBA (Sound Pressure) (Standby), Back Ground Level (Sleep)	
Duty Cycle, Monthly	150,000 sheets	200,000 sheets
Dimension (WxDxH)	418 x 435 x 358 mm (16.46 x 17.13 x 14.09")	
Weight	Set - 22.96 kg (50.62 lbs), Imaging Unit - 1.67 kg (3.68 lbs), Toner - 0.69 kg (1.52 lbs), Gross - 26.45 kg (58.31 lbs)	
Power Consumption	Less than 12 W (Ready) Less than 850 W (AVG)/1400 W (Max/Peak) Less than 4.5 W (Power Save)	Less than 15 W (Ready)/Less than 900W (AVG)/ 1400W (Max/Peak)/ Less than 4.5W (Power Save)

Consumables		
Yield	Standard: Average Cartridge Yield 7K standard pages* High yield: Average Cartridge Yield 15K standard pages* *Declared Cartridge Yield in accordance with ISO/IEC 19752.	Standard: Average Cartridge Yield 7K standard pages* High yield: Average Cartridge Yield 15K standard pages* Extra High yield: Cartridge Yield 20K standard pages* *Declared Cartridge Yield in accordance with ISO/IEC 19752.
Type	1-piece Cartridge	
Codes	Standard: MLT-D307S - 7,000 High Yield: MLT-D307L - 15,000 60,000 Page Imaging Unit MLT-R309/SEE	Standard: MLT-D307S - 7,000 High Yield: MLT-D307L - 15,000 Extra High Yield: MLT-D307E - 20,000 60,000 Page Imaging Unit MLT-R309/SEE
Options		
Options	Memory: 512MB - ML-MEM170/SEE Second Cassette: 520 sheet Cassette Tray - ML-S6510A/SEE IEEE 1284B Parallel connection - ML-PAR100/SEE 4 Wheel Short Stand - ML-DSK65S/SEE	60,000 Page Imaging Unit - MLT-R309/ELS Memory: 512MB - ML-MEM170/SEE Second Cassette: 520 sheet Cassette Tray - ML-S6510A/SEE Finisher (Stapler): 500 sheets - ML-OCT65/SEE Multi-bin Mailbox: 400 sheets - ML-MBT65/SEE 160 GB Hard Disk - ML-HDK465/SEE IEEE 1284B Parallel connection - ML-PAR100/SEE 4 Wheel Short Stand - ML-DSK65S/SEE



For more information, please visit www.samsung.com/uk/printer

