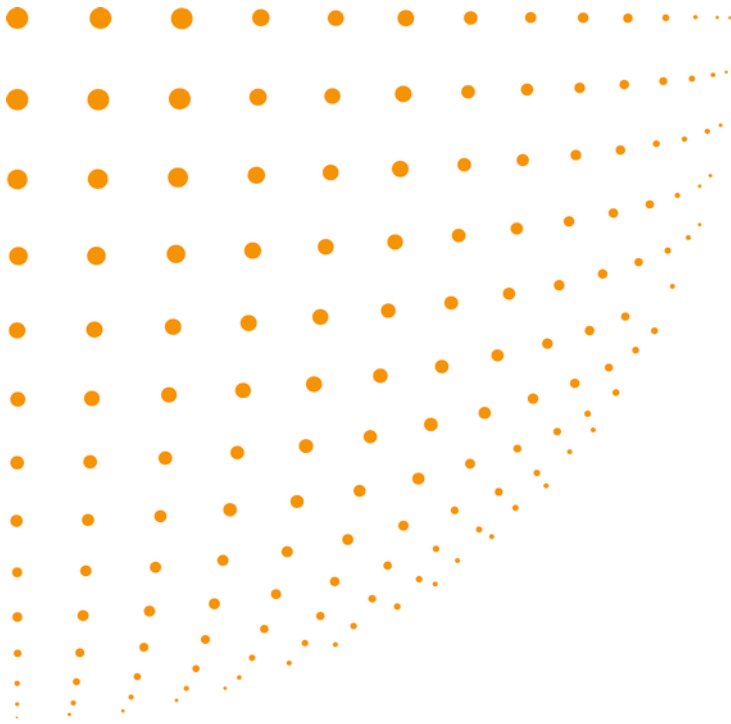


Efficient black and white multi-taskers



Multi-talented performance

The Aficio™SP 3500SF/SP 3510SF black-and-white A4 MFPs give you smart new ways to print, copy, scan and fax. They significantly reduce your costs and improve the speed and agility of your business. These devices are packed with all the features you would expect from a top-of-the-range MFP in terms of speed, image quality and paper handling options. Plus, they are compact and easy-to-maintain.



- Productive: 28 cpm.
- 1,200 x 1,200 dpi resolution.
- Customisable 4-line LCD operating panel.
- Standard security & network management.
- Eco-friendly functions.

So easy to work with



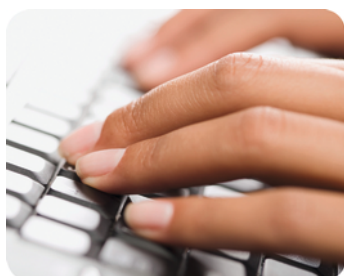
SIMPLE TO OPERATE AND MAINTAIN

Like all Ricoh products, the SP 3500SF/SP 3510SF are refreshingly easy to use – thanks partly to a 4-line LCD operating panel with 10 number keys. They are also simple to maintain. The single all-in-one cartridge is easy to replace and eliminates the need to handle various consumables for one product.



COMPACT DESIGN

Compact enough to fit unobtrusively on a desk, the SP 3500SF/SP 3510SF have an extremely small footprint. Their simple design optimises desktop workspace and promotes intuitive usability.



ADVANCED FAXING

The SP 3500SF/SP 3510SF incorporate efficient fax technologies to handle your communications. You can minimise phone line costs with advanced T.37 internet faxing, or simply switch to IP-Fax, PC-Fax or G3-Fax. Incoming faxes can be sent to selected e-mail addresses, so you can receive documents from any computer.

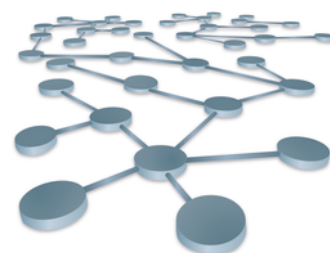


AVAILABLE AT SHORT NOTICE

- Warm-up: less than 30 seconds (from power off).
- First copy time: less than 8 seconds.
- Print speed: 28 pages per minute.
- Maximum capacity: 550 sheets.
- Print resolution up to 1,200 dpi.

EASY DEVICE MANAGEMENT

You can easily manage system settings, status and supply levels, and perform other administrative tasks remotely with Web Image Monitor. Viewing and controlling the output of multiple networked systems is quick with Ricoh's unique Web SmartDeviceMonitor while @Remote collects operational data so your output devices can be managed more efficiently. Installing a driver is also straightforward.



EFFICIENT DOCUMENT SCANNING

Easily scan all types of documents, and distribute to individuals via scan to email or to network folders via scan-to-folder. Colour scanning adds a new dimension, as does ID Card Copy: copy both sides of an ID card onto one side of paper in a quick and simple operation. Double-sided scanning is easy using the standard ARDF on the SP 3510SF.

ENVIRONMENTALLY FRIENDLY

At Ricoh we help you lower your environmental footprint. The SP 3500SF/SP 3510SF have eco-friendly features such as sleep mode, quota setting, duplexing (SP 3510SF), paperless fax and Energy Saver mode. In addition, Ricoh products are Energy Star compliant meaning less CO2 is produced in providing the energy needed to run them.



GENERAL

Warm-up time:	30 seconds
First output speed:	8 seconds
Continuous output speed:	28 pages per minute
Memory:	Standard: 128 MB
Dimensions (W x D x H):	420 x 397 x 442/464 mm
Weight:	17.5/19 kg
Power source:	220 - 240 V, 50/60 Hz

COPIER

Copying process:	Laser beam scanning and electro-photographic printing
Multiple copying:	Up to 99 copies
Resolution:	600 x 600 dpi
Zoom:	From 25% to 400% in 1% steps

PRINTER

Printer language:	Standard: PCL6, PostScript® 3™ emulation
Print resolution:	Maximum: 1,200 x 1,200 dpi
Interface:	Standard: USB 2.0, Ethernet 10 base-T/100 base-TX
Network protocol:	TCP/IP, IPP
Windows® environments:	Windows® XP Windows® Vista Windows® 7 Windows® Server 2003 Windows® Server 2008 Windows® Server 2008R2
Mac OS environments:	Macintosh OS X v10.4 or later

SCANNER

Resolution:	Scanner: Up to 1,200 x 1,200 dpi Driver: Up to 19,200 x 19,200 dpi
Scan mode:	B/W, Greyscale, Full colour
Original size:	A4
Bundled drivers:	Network TWAIN Scanner utility

FAX

Circuit:	PSTN, PBX
Compatibility:	ITU-T (CCITT) G3
Resolution:	8 x 3.85 line/mm, 100 x 100 dpi 8 x 7.7 line/mm, 200 x 200 dpi
Compression method:	MH, MR, MMR, JBIG
Modem speed:	Maximum: 33.6 Kbps
Scanning speed:	5 second(s)
Memory backup:	Yes

PAPER HANDLING

Recommended paper size:	A4, A6, B5, B6
Paper input capacity:	Standard: 250 sheets Maximum: 550 sheets
Paper output capacity:	Maximum: 125 sheets
Paper weight:	Standard paper trays: 52 - 162 g/m² Optional paper trays: 60 - 105 g/m² Bypass tray: 52 - 162 g/m² Duplex tray: 60 - 105 g/m²

ECOLOGY

Power consumption:	Maximum: 895 W Energy Saver timer: 10 W
--------------------	--------------------------------------------

OPTIONS

1 x 250-sheet paper tray

CONSUMABLES

Cartridge capacity:	Black: 2500/6400 prints
---------------------	-------------------------

For availability of models, options and software, please consult your local Ricoh supplier.

ISO9001 certified, ISO14001 certified

All brand and/or product names are trademarks of their respective owners. Specifications and external appearance are subject to change without notice. The colour of the actual product may vary from the colour shown in the brochure. The images in this brochure are not real photographs and slight differences in detail might appear.

Copyright © 2012 Ricoh Europe PLC. All rights reserved. This brochure, its contents and/or layout may not be modified and/or adapted, copied in part or in whole and/or incorporated into other works without the prior written permission of Ricoh Europe PLC.

RICOH

www.ricoh-europe.com

For more information,
please contact

Ricoh UK Ltd.

1 Plane Tree Crescent
Feltham Middlesex
TW13 7HG
Tel.: +44 (0) 20 8261 4000
Fax: +44 (0) 20 8261 4288
www.ricoh.co.uk