

LEITZ ICON

ONE MACHINE FOR YOUR LABELLING NEEDS



EASY



MULTIFUNCTIONAL



VERSATILE



MOBILE



SMART



FAST

www.leitz.com/icon

LEITZ[®]
ICON

Introducing the Leitz® Icon™

One machine for all your labelling needs

Leitz has a long tradition of developing innovative solutions which simplify and organise modern working environments. The Leitz Icon Smart Wireless Label Printer is one of the best examples.

Labelling helps many of our customers stay organised. However, end users told us they were frustrated with the lack of innovation in the labelling market. That's because for years, they've had to use three entirely different kinds of machine for their labelling needs:

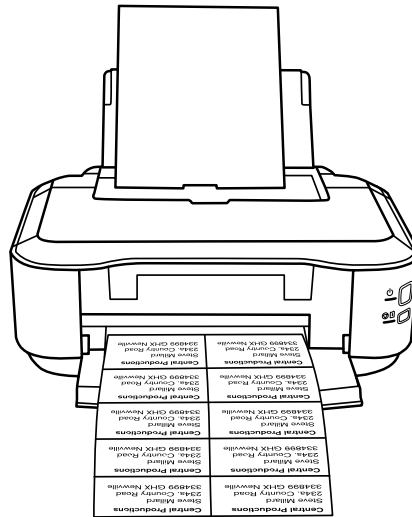
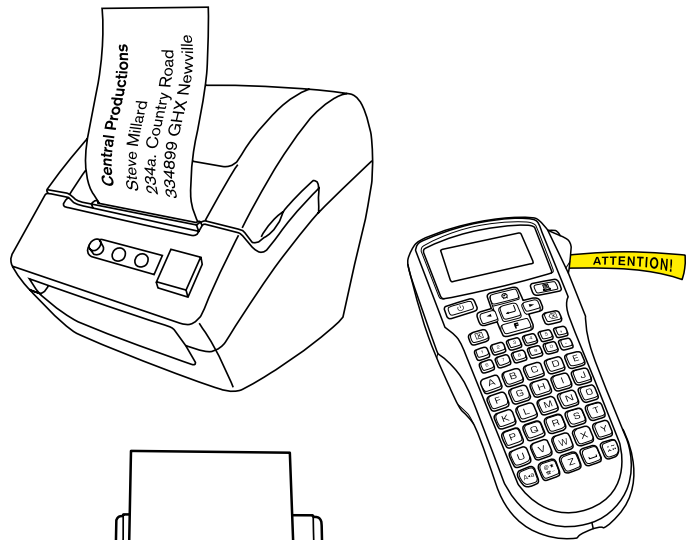
1. Desktop label printers. Connected to a PC, these print address labels for envelopes and packages.
2. Handheld, battery powered electronic label makers. These print narrow plastic labels for longer-term applications, such as filing and general identification.
3. Regular office printers. These are used for high-volume jobs such as sending post and printing sheets of labels.

At Leitz, we looked at existing labelling products, and developed a new solution in line with the latest technology trends and users' needs and behaviour.

The result is the Leitz Icon. This all-new label printing system combines the functionality of label printers and makers with the speed of office printers. Furthermore, the Leitz Icon was designed to suit today's workplace.

1. Built-in Wi-Fi and USB interfaces mean the Leitz Icon works as well as a shared label printer as it does directly connected to a PC.
2. With software packages for Windows, Macintosh, iOS and Android, the Leitz Icon works as well with smartphones and tablets as it does with PCs and Macs.
3. An optional battery pack makes Leitz Icon easy to use out of the office, even when you don't have access to mains power.

Discover a new world of label printing with Leitz Icon and learn more about what Leitz can do for you.

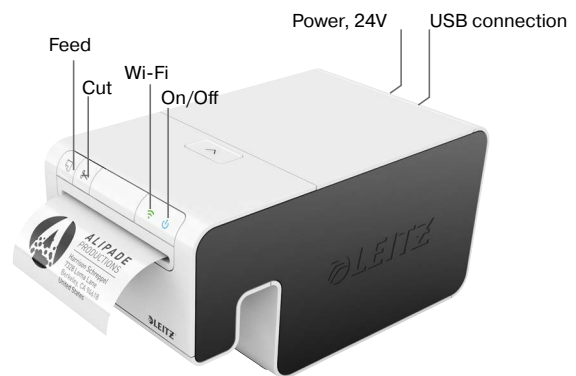


The Leitz Icon Printer

The Leitz Icon printer fits comfortably on any desk and is packed with features that make labeling easier for everyone in (and out) of your office.

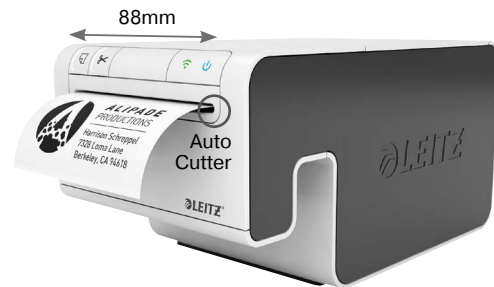
Clear, Simple Controls

Leitz Icon's simple controls use international symbols and color LEDs for clarity.



Automatic Cutter

In order to handle both die-cut and continuous rolls of label stock, Leitz Icon includes an automatic cutter that cuts continuous label material to the exact right size.



Extra Wide Print Width

Leitz Icon handles materials up to 91mm in width, 40% wider than most other desktop label printers. This means Leitz Icon can print many of the most popular office labels from a single roll of continuous labels.

For example, a roll of 88mm wide continuous paper labels can be used to print address labels for envelopes, shipping labels for packages, temporary name badges, file folder labels and more. The automatic cutter simply cuts each label to the right size.

Super Fast Print Speed

Leitz Icon prints incredibly fast, up to 200 address labels per minute. That means you can print an entire roll of die cut address labels (690) in just 3 ½ minutes.



Easy to Connect, Anywhere.

With a built in USB port, Wi-Fi and AirPrint support, it's easy to connect Leitz Icon to any PC, Mac, tablet or smart phone in your office. Leitz Icon can even broadcast its own wireless network (Soft AP mode) when standard Wi-Fi networks are not available.



Battery Pack Enables Remote Printing

Connects quickly to back of Leitz Icon printer. Powers the Leitz Icon printer for 12 hours and 1200 labels. Charges in 3 hours when fully discharged.



Drop In Label Cartridges Feature Auto Loading

Simply drop in cartridge and close the lid. Leitz Icon automatically loads the material.



You Always Know What Labels Are Loaded and How Many Are Left

Leitz Icon label cartridges automatically communicate to all connected devices what material is loaded and how much is left. You'll never waste labels by having the wrong type installed, or run out of labels mid-way through a print job.



Completely Recyclable

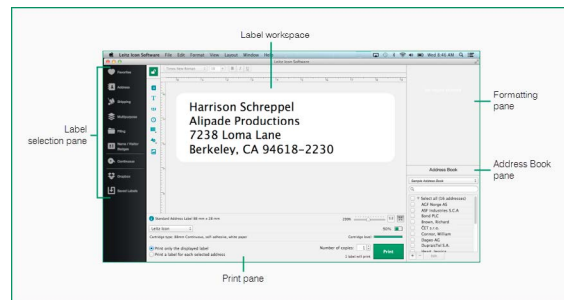
The cartridges are made of recycled cardboard material with a plastic part that is easy to separate. Both are recyclable.



The Leitz Icon Software

Available for Windows, Macintosh, iOS and Android, the Leitz Icon software features a simple, logical interface that is customized for the differences between mouse and touch driven devices.

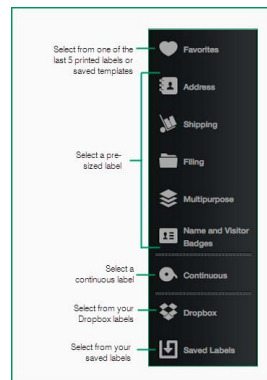
Let's start with a detailed overview of the software for **Windows and Mac**.



Label Selection Pane

The Label Selection Pane lists the available label categories. Select from your saved favorite labels or templates.

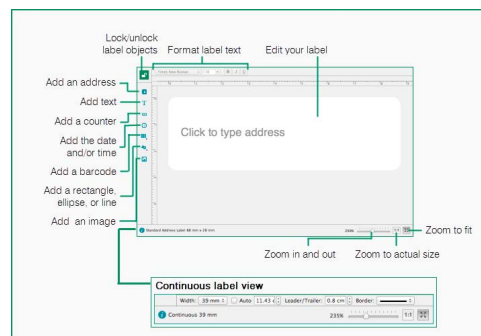
Saving labels to **Dropbox** allows you (and others you invite) to access those labels from any computer or mobile device running the Leitz Icon software.



Label Workspace

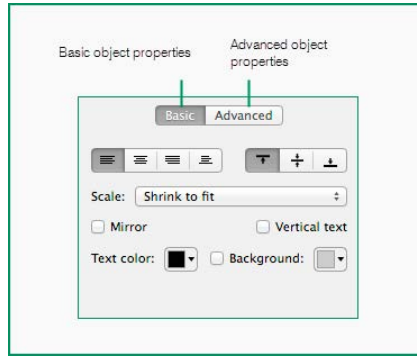
You can add addresses, text, counters, the date and time, barcodes, shapes, lines, and images to your labels. Each type of item is added as a separate item that you can move, resize and format as desired. You can also lock the label template, which only allows you to change the content of the object, but not the object itself.

13 barcodes are supported: Code 39, Code 39/Mod 45, Code 2 of 5, Code 128 Type A, B, C, and Auto, EAN 8 and 13, UPC A and E, Codabar, ITF 14.



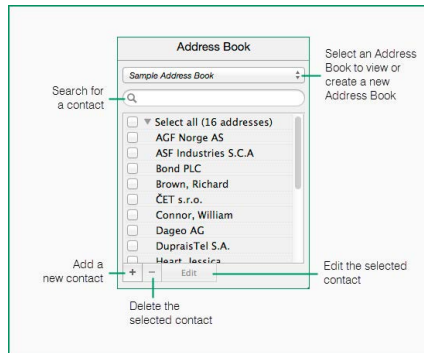
Formatting Pane

The **Formatting Pane** is where you view and edit the properties of each object on the label. Basic and advanced properties depend on the object type. **Basic properties** include such options as justifying and adding borders to text, automatic resizing of text to fit a specific space, adding borders to text and objects, flipping objects horizontally and vertically, selecting among 13 bar codes, resizing bar codes, linking bar codes to specific or variable text, setting up sequential auto counters for numbering, and more. **Advanced properties** enable objects to be positioned with great accuracy as well as rotated in 90 degree increments. Text and bar codes can be fixed or variable depending on entries in the address book or other sources.



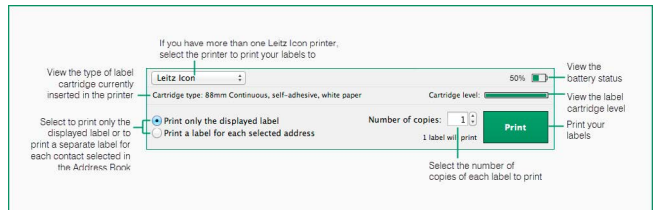
Address Book Pane

The **Address Book** pane is where you store contacts or other frequently used information in one or multiple lists. You can import Excel, CSV and tab delimited files as well as Address Books from DYMO Label Software. Macintosh users can also view their Mac contacts in the Address Book pane.



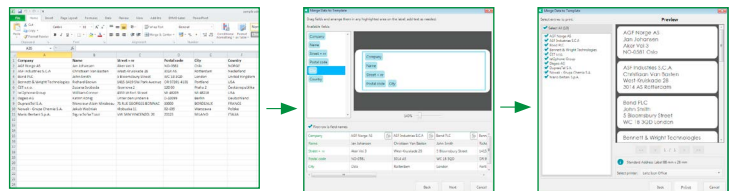
Print Pane

From the **Print Pane**, you can select which Leitz Icon you want to use for printing, and select how to print your labels. You can also view the type of label cartridge currently inserted in your printer and the cartridge level. If you are using the optional rechargeable battery with your printer, you can also view the status of the battery.



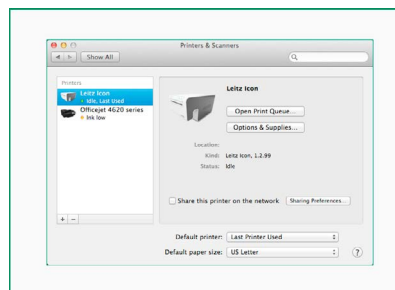
Merge Data to Template

You can import addresses, barcodes, text or other data directly from Excel onto a label using the merge data to template feature. Simply drag the column titles from your excel sheet onto the label and the software will automatically generate the list which is ready to be printed.



Printer Drivers

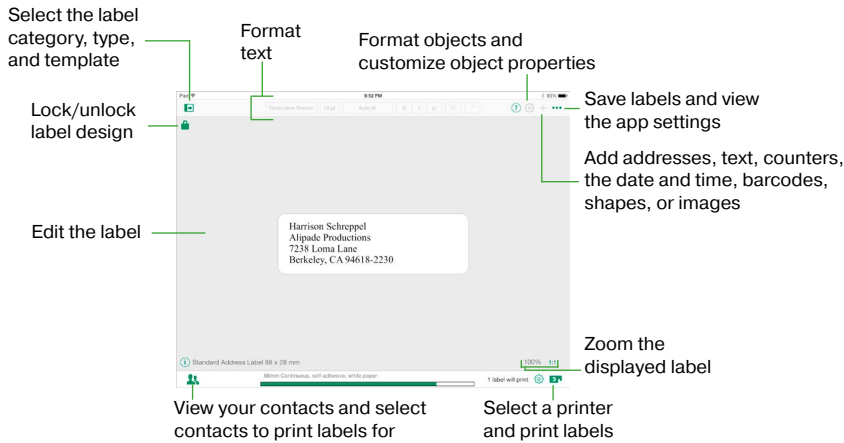
The Leitz Icon software installs **Printer Drivers** that enable you to print labels direct from other applications such as Microsoft Word by choosing the Leitz Icon printer in Settings, then choosing portrait or landscape mode in Page Setup within each application, adjusting margins as necessary.



The Leitz Icon Software for Tablets and Smartphones

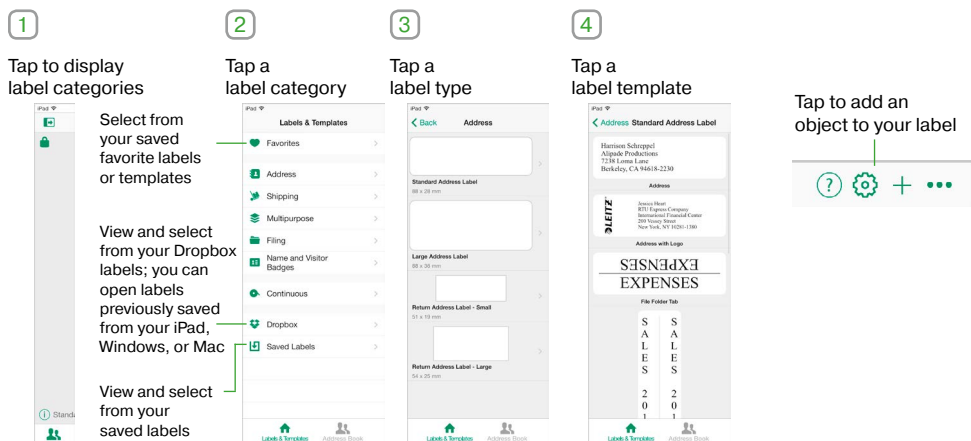
Available for iOS and Android, the Leitz Icon software features a simple, logical touch based interface. The following screens highlight several of the mobile software features (iPad version).

Main Label Workspace



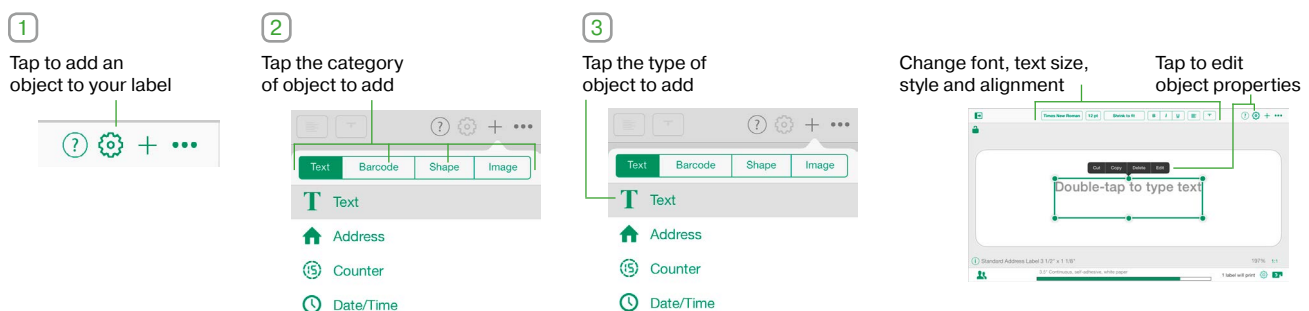
Choosing a Label Template

Leitz Icon Software comes with a wide variety of templates for each of the printer's die-cut and continuous label types.



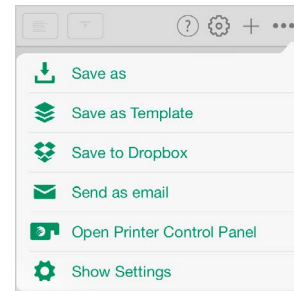
Adding Objects to Your Labels

You can add addresses, text, counters, the date and time, barcodes, shapes, and images to your label. Each item is inserted as a separate object that you can move and resize as desired.



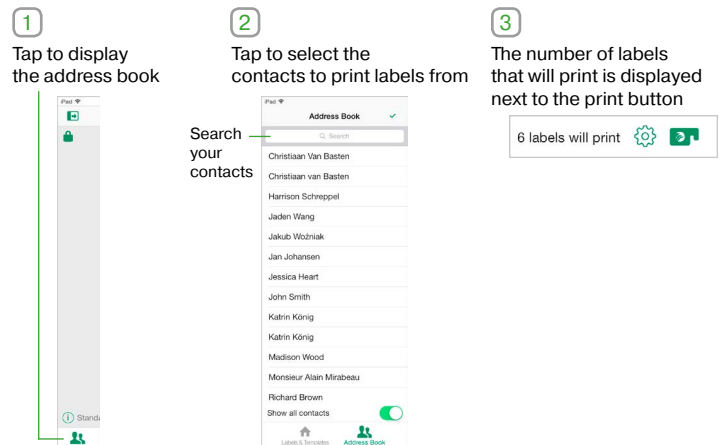
Saving Labels and Templates

After design and editing, it's easy to save labels and templates for quick access at any time. You can also save labels and templates to your own Dropbox account, which is great, because it enables you to access them from any computer or iPad running Leitz Icon Software or the Leitz Icon app.



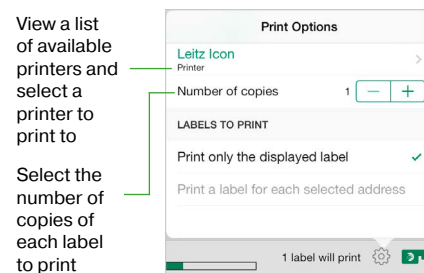
Using the Address Book

All your available email and iCloud contacts are shown in the Address Book. If you have an address or variable text object on your label, you can select multiple contacts from the address book to print labels from. The selected information is automatically inserted in the address or variable text object when you choose to print.



Printing Labels

You can choose to print a single label, multiple copies of the same label, one label for each contact selected in the address book, or multiple labels for each contact selected in the address book.



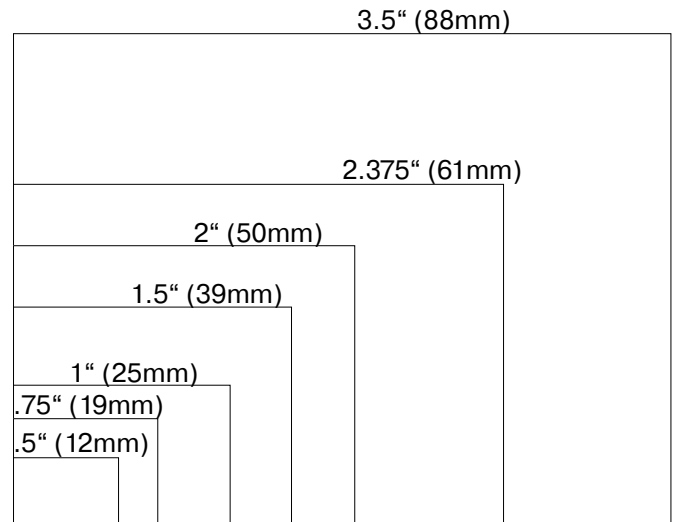
The Leitz Icon Labels

The Leitz Icon Label Printer prints on continuous paper and plastic, on diecut labels as well as non-adhesive card stock

1. Continuous White Paper Labels

With Leitz Icon's Continuous Labels, many labels can be printed from a single roll, with the auto-cutter simply cutting the labels to the perfect size.

The 3.5" (88mm) wide roll is an excellent example, as many use this label to print labels for envelopes, packages, temporary name badges, and even some file folders.



White Continuous Multi-Purpose Paper Labels

Item Number	Description	In Feet		In Meters	
		Width	Length	Width	Length
70030001	3.5" (88mm) White Continuous Labels	3 1/2"	72'	88mm	22m
70040001	2.375" (61mm) White Continuous Labels	2 3/8"	72'	61mm	22m
70060001	2" (50mm) White Continuous Labels	2"	72'	50mm	22m
70070001	1.5" (39mm) White Continuous Labels	1 1/2"	72'	39mm	22m
70090001	1" (25mm) White Continuous Labels	1"	72'	25mm	22m
70100001	.75" (19mm) White Continuous Labels	3/4"	72'	19mm	22m
70110001	.5" (12mm) White Continuous Labels	1/2"	72'	12mm	22m

2. Continuous Plastic Labels for More Permanent Applications – in White, Yellow and Red

When you need more permanent or color labels, plastic labels are available in white, yellow and red. The auto-cutter cuts the each label to the perfect size once printed.

39 ft. (10 meters)

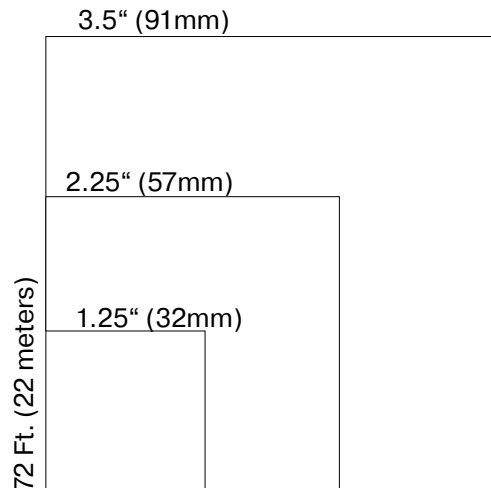


Plastic Self-Adhesive Color Labels

Item Number	Description	In Feet		In Meters	
		Width	Length	Width	Length
70150001	1/2" (12mm) White Plastic Labels	1/2"	39'	12mm	10m
70150015	1/2" (12mm) Yellow Plastic Labels	1/2"	39'	12mm	10m
70150025	1/2" (12mm) Red Plastic Labels	1/2"	39'	12mm	10m
70160001	3.5" (88mm) White Plastic Labels	3 1/2"	39'	88mm	10m
70160015	3.5" (88mm) Yellow Plastic Labels	3 1/2"	39'	88mm	10m
70160025	3.5" (88mm) Red Plastic Labels	3 1/2"	39'	88mm	10m

3. Continuous White Card Stock

Leitz Icon doesn't only print self-adhesive labels. It also handles white non-adhesive card stock that is ideal for making name badges, loyalty cards, table tents and more.



White Continuous Non-Adhesive Card Stock

Item Number	Description	In Feet		In Meters	
		Width	Length	Width	Length
70190001	3.5" (91mm) Continuous Card Stock	3.5"	72'	91mm	22m
70050001	2.25" (57mm) Continuous Card Stock	2 1/4"	72'	57mm	22m
70080001	1.25" (32mm) Continuous Card Stock	1 1/4"	72'	32mm	22m

4. Die-Cut White Paper Labels

Die cut labels are ideal when you're printing a large number of labels, and are looking for the fastest print speed.

Four sizes are available: two address and two shipping, though they can be used for any purpose that suits their size.

Print speed is up to 200 labels per minute when connected via USB (somewhat slower over a Wi-Fi connection).

General Guidelines for the Use of Paper and Plastic Labels

Leitz Icon paper labels are designed for address, package and shipping labels, as well as temporary name badges, for which a short-term duration is fine. Leitz Icon plastic labels are for indoor applications where the labels need to be more durable. Plastic labels are also ideal for requirements where the label surface finish needs to be smoother compared to paper labels. The plastic labels can withstand freezer temperatures as well as temperatures up to 50 C. The white plastic material can withstand water, oil, alcohol and petrol, but the color labels cannot.



Die-Cut Paper Labels

Item Number	Description	Labels per Roll	In Inches		In Meters	
			Height	Width	Height	Width
70170001	Address Labels	690	1 1/8"	3 1/2"	28mm	88mm
70120001	International Address Labels	600	1 3/8"	3 1/2"	36mm	88mm
70180001	Small Shipping Labels	435	2"	3 1/2"	50mm	88mm
70130001	Shipping Labels	225	2 1/4"	4"	59mm	102mm

Leitz Icon Support

Operating System Compatibility:

The Leitz Icon is compatible with Windows 7, 8 and 10. Also with Macintosh OSX version 10.8 and later, and with iOS 8 or later for iPad and iPhone. A version for Android Os 4.1.2 or later is also available.

Warranty:

The Leitz Icon Label Printer comes with a 2 year warranty, that is extended to three years if you register your printer at www.leitz.com/Icon.

Support:

For technical support, visit www.Leitz.com/Icon/support where you will find:

1. [Quick Start Guides](#) and [User Manuals](#) that guide you through the installation and use the Leitz Icon Printer, software, labels and Battery Pack.
2. [Firmware Updates](#) and [Software Updates](#) for easy download.
3. A list of [Frequently Asked Questions](#) and [Answers](#).
4. A Contact Us form for specific questions not answered in the FAQs or elsewhere on the site.

Developers:

The Leitz Icon label printer software includes Print Driver for Windows and Macintosh.

Technical Specifications:

Power			24V DC. 3.75 Amps
Printer Type			Direct thermal
Resolution			300 dots per inch (DPI)
Maximum resolution			300 x 600 (DPI)
Maximum print width			960 dots (3.2 inches/81.3mm)
Maximum paper width			3.58 inches (91mm)
Interface	Wi-Fi		2.4GHz, 802.11b/g
	USB		Full Speed USB 2.0 Printer Class Device
Maximum print speed			200 labels per minute (via USB connection) For 4-line standard address label
Duty cycle	Printer		2000 labels per hour
	Cutter		1800 cuts per hour
Size	Printer	Height	4.42 inches (112.25mm)
		Width	5.07 inches (128.85mm)
		Depth	8.55 inches (217.25mm)
	Battery	Height	4.38 inches (111.25mm)
		Width	5.07 inches (128.85mm)
		Depth	1.95 inches (49.54mm)
	Printer with battery	Height	4.42 inches (112.25mm)
		Width	5.07 inches (128.85mm)
		Depth	10.15 inches (257.75mm)
Weight	Printer		2.8 lbs (1.27kg)
	Battery		1.09 lbs (0.496kg)

Labeling System, Intelligent Label Cartridge are trademarks of Esselte IPR AB or its affiliates. Windows and Windows XP are registered trademarks of Microsoft Corporation in the United States and other countries. Mac and iPad are trademarks of Apple Inc., registered in the U.S. and other countries. iOS is a trademark or registered trademark of Cisco in the U.S. and other countries and is used under license to Apple. The DYMO and DYMO Label trademarks are registered trademarks of Sanford, LP and Esselte is not affiliated with, endorsed, or sponsored by Sanford, LP. Revised 10/2014