



# HP LaserJet Enterprise M806 Printer series

Ideal for boosting productivity and efficiency across your business. Equip your teams to handle even the biggest print jobs quickly with HP's top-of-the line A3 printer – and print while on the go. Your investment is protected with easy upgrades.



## Boost productivity: give workgroups the speed they need.

- Print big jobs fast at up to 56 ppm A4, and easily thanks to the extra-large input capacity of up to 4,600 pages<sup>3</sup>. Versatile paper handling options include a stapler/stacker/hole punch and booklet maker<sup>4</sup>.
- Simplify tasks with the right touch – equip users to fly through tasks with the large 10.9 cm (4.3-inch) colour touchscreen.
- Simplicity all around – make it easy for all to print with one common driver<sup>5</sup>.
- Don't wait, just print right away and save energy with Instant-on Technology.

## Experience greater efficiency with mobile printing.

- Mobile printing is simple with wireless direct printing<sup>1</sup>, and enable touch-to-print convenience from a mobile device<sup>2</sup>.
- Let employees print from mobile devices with built-in print capability or HP ePrint app and software<sup>10</sup>.
- Printing made Apple® simple – let users print wirelessly from an iPad®, iPhone®, or iPod touch®<sup>11</sup>.



## Invest once, expand easily.

- Keep a close watch, even from afar — monitor and control printers centrally with HP Web Jetadmin<sup>6</sup>.
- Apply fleet-wide policies to protect all your HP devices with the HP Imaging and Printing Center<sup>7</sup>.
- Safeguard your printers right away with HP Instant-on Security<sup>8</sup>, and protect the sensitive data sent to your printer with the HP High-Performance Secure Hard Disk<sup>9</sup>.
- Prints with a positive ID – authenticate users at the device to help secure print jobs.



<sup>1</sup> Wireless direct printing is standard in the HP LaserJet Enterprise M806x+ D7P69A, and may be added as an option to the HP LaserJet Enterprise M806dn and M806x+ C2245A. Mobile device may require an app or driver. Wireless performance is dependent on physical environment and distance from the printer. For details, see [hp.com/go/wirelessprinting](http://hp.com/go/wirelessprinting).

<sup>2</sup> Touch-to-print capability is standard in the HP LaserJet Enterprise M806x+ D7P69A model, and may be added as an option to the HP LaserJet Enterprise M806dn and M806x+ C2245A. Mobile device must support near field communications-enabled printing.

<sup>3</sup> Maximum paper capacity of 4,600 sheets is standard in the HP LaserJet Enterprise M806x+ D7P69A and M806x+ C2245A and available in the HP LaserJet Enterprise M806dn model with the optional 3,500-sheet high-capacity input tray.

<sup>4</sup> 2 bin stapler/stacker, 2 bin stapler/stacker/hole punch and booklet maker are optional accessories. Please purchase separately.

<sup>5</sup> The HP Universal Print Driver is free and available for download at [hp.com/go/upd](http://hp.com/go/upd).

<sup>6</sup> HP Web Jetadmin is free and available for download at [hp.com/go/webjetadmin](http://hp.com/go/webjetadmin).

<sup>7</sup> HP Imaging and Printing Security Center must be purchased separately.

<sup>8</sup> HP Instant-on Security is part of HP Imaging and Printing Security Center, which must be purchased separately.

<sup>9</sup> HP High-Performance Secure Hard Drive is not available on the HP LaserJet Enterprise M806dn and can't be purchased separately.

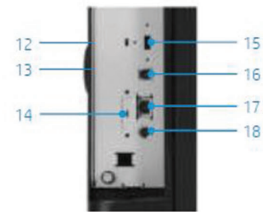
<sup>10</sup> Local printing requires mobile device and printer to be on the same network or have a direct wireless connection to printer. Wireless performance is dependent upon physical environment and distance from access point. Wireless operations are compatible with 2.4 GHz operations only. Remote printing requires an Internet connection to an HP Web-connected printer. App or software and HP ePrint account registration may also be required. Wireless broadband use requires separately purchased service contract for mobile devices. Check with service provider for coverage and availability in your area. See [hp.com/go/mobileprinting](http://hp.com/go/mobileprinting) for more details.

<sup>11</sup> Supports OS X® Lion, OS X Mountain Lion, and the following devices running iOS 4.2 or later: iPad® (all models), iPhone® (3GS or later), and iPod touch® (third generation or later). Works with HP's AirPrint-enabled printers and requires the printer be connected to the same network as your OS X or iOS device. Wireless performance is dependent on physical environment and distance from the access point. OS X, iPad, iPhone, and iPod touch are trademarks of Apple® Inc., registered in the United States and other countries. AirPrint™ and the AirPrint logo are trademarks of Apple Inc.



## Product walkaround

1. Intuitive 10.9 cm (4.3 in) colortouchscreen control panel
2. 500-page output bin
3. Hardware integration pocket (HIP) for solution integration
4. 100-sheet face-up straight-through output bin
5. Easy front-door access to HP all-in-one toner cartridge
6. Built-in automatic two-sided printing
7. Two 500-sheet input trays support media up to A3 (11 x 17 in)
8. 3,500-sheet high-capacity input tray supports A4/letter media
9. Easy-access USB port to print files directly
10. 100-sheet multipurpose tray handles media up to 220 g/m<sup>2</sup> (53 lb bond)
11. Right-side doors provide access for clearing jams
12. 800 MHz processor, 1 GB standard memory
13. HP High-Performance Secure Hard Disk
14. Access port for optional Kensington-style lock
15. USB port (for connecting third-party devices)
16. Hi-Speed USB 2.0 printing port
17. HP Jetdirect Gigabit Ethernet print server
18. Foreign interface harness (for connecting third-party devices)



## Series at a glance



### HP LaserJet Enterprise M806dn Printer

- print speed A4 black: up to 56 ppm (duplex: up to 56 ipm)
- print speed A3 black: up to 28 ppm
- up to 1200 x 1200 dpi (HP FastRes 1200)
- 1 GB RAM expandable to 1.5 GB
- 800 MHz processor
- 2 Hi-Speed USB 2.0 Host
- 1 Hi-Speed USB 2.0 Device
- 1 Gigabit Ethernet 10/100/1000T network
- 1 Foreign Interface
- 1 Hardware Integration Pocket
- 2 Internal USB Host
- Two 500-sheet input trays
- 100-sheet multi-purpose tray

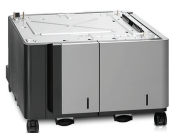
### HP LaserJet Enterprise M806x+ NFC/Wireless Direct Printer

- as HP LaserJet Enterprise M806dn with:
- Near Field Communications (NFC) Module for wireless direct printing
- 320 GB HP High-Performance Secure Hard Disk
- 3,500 sheet High-capacity tray (tray 4: 1500 sheets A4 or letter only, tray 5: 2000 sheets A4 or letter only)

### HP LaserJet Enterprise M806x+ Printer

- as HP LaserJet Enterprise M806dn with:
- 320 GB HP High-Performance Secure Hard Disk
- 3,500 sheet High-capacity tray (tray 4: 1500 sheets A4 or letter only, tray 5: 2000 sheets A4 or letter only)

## Recommended accessories



**C3F79A**  
**HP LaserJet 3500-sheet High-capacity Input Tray**  
 Support the productivity of growing work groups with this high-performance, robust input feeder and stand. The additional 3,500-sheet paper capacity allows users to spend more time focusing on business and less time reloading paper.



**CZ285A**  
**HP LaserJet Booklet Maker/Finisher**  
 The HP LaserJet Booklet Maker/Finisher provides the ability to create more complex finished documents in-house without the time and expense of going to an outside service.



**CZ994A**  
**HP LaserJet Stapler/Stacker**  
 The HP LaserJet Stapler/Stacker provides automatic stapling and stacking for improved efficiency and increased output capacity.



**CZ996A**  
**HP LaserJet Stapler/Stacker with 2/4 hole punch**  
 The HP LaserJet Stapler/Stacker with 2/4 hole punch provides automatic stapling and stacking for improved efficiency and increased output capacity.



**C8091A**  
**HP Staple Cartridge Refill**  
 HP Staple Cartridge Refills give you more for your money and ensure you don't have to worry about frequent cartridge replacement. Each refill contains 5000 staples.

## Ordering information



**HP LaserJet Enterprise M806dn Printer (CZ244A)**  
 HP LaserJet M806dn Printer; HP Black LaserJet Toner Cartridge (~34.5K pages); Hardware Install Guide, Support flyer, Warranty card; Printer documentation and driver on CD-ROM; power cord



**HP LaserJet Enterprise M806x+ NFC/Wireless Direct Printer (D7P69A)**  
 HP LaserJet M806x+ Printer; HP Black LaserJet Toner Cartridge (~34.5K pages); Hardware Install Guide, Support flyer, Warranty card; Printer documentation and driver on CD-ROM; power cord; NFC module



**HP LaserJet Enterprise M806x+ Printer (CZ245A)**  
 HP LaserJet M806x+ Printer; HP Black LaserJet Toner Cartridge (~34.5K pages); Hardware Install Guide, Support flyer, Warranty card; Printer documentation and driver on CD-ROM; power cord

## Accessories, Supplies and Support

### Accessories

<b>C3F79A</b>	HP LaserJet 3500-sheet High-capacity Input Tray
<b>CZ285A</b>	HP LaserJet Booklet Maker/Finisher
<b>CZ994A</b>	HP LaserJet Stapler/Stacker
<b>CZ996A</b>	HP LaserJet Stapler/Stacker with 2/4 hole punch
<b>C8091A</b>	HP Staple Cartridge Refill
<b>CC383A</b>	HP 2-pack 2000-staple Cartridge

### Connectivity

<b>J8026A</b>	HP Jetdirect 2700w USB Wireless Print Server
<b>J8029A</b>	HP Jetdirect 2800w NFC/Wireless Direct Accessory

### Supplies

<b>C2H57A</b>	HP LaserJet 220V Maintenance/Fuser Kit
<b>CF325X</b>	HP 25X High Yield Black Original LaserJet Toner Cartridge

### Service & support

<b>U8C50E</b>	HP 3 year Next Business Day LaserJet Enterprise M806 Hardware Support
<b>U8C53E</b>	HP 3 year 4 hour 9x5 LaserJet Enterprise M806 Hardware Support
<b>U8C51E</b>	HP 4 year Next Business Day LaserJet Enterprise M806 Hardware Support
<b>U8C52E</b>	HP 5 year Next Business Day LaserJet Enterprise M806 Hardware Support
<b>U8C71PE</b>	HP 1 year Post Warranty Next Business Day LaserJet Enterprise M806 Hardware Support
<b>U8C72PE</b>	HP 2 year Post Warranty Next Business Day LaserJet Enterprise M806 Hardware Support
<b>U8C73PE</b>	HP 1 year Post Warrant 4 hour 9x5 9x5 LaserJet Enterprise M806 Hardware Support

For a complete list of supplies, accessories and services, please refer to <http://www.hp.com>  
 For workflow, device management and other solutions, please visit the Global Solutions catalog: [www.hp.com/go/gsc](http://www.hp.com/go/gsc)

Declared yield value in accordance with ISO/IEC 19752. Actual yields vary considerably based on images printed and other factors. For more information, visit [hp.com/go/learnaboutsupplies](http://hp.com/go/learnaboutsupplies). Actual yields vary considerably based on images printed and other factors. For details see [hp.com/go/learnaboutsupplies](http://hp.com/go/learnaboutsupplies)

Count on dependable support to create the best image possible. We can help you enhance your printing and imaging environment, protect your IT investment, and grow your business—with expert support that's affordable, personal, and tailored to your needs through HP Care Pack Services.

# Technical specifications

<b>Print technology</b>	Laser		
<b>Print speed</b>	First page out black (A4): As fast as 8.5 sec A4 black: Up to 56 ppm (duplex: up to 56 ipm); A3 black: Up to 28 ppm Measured using ISO/IEC 24734, excludes first set of test documents. For more information see <a href="http://hp.com/go/printerclaims">hp.com/go/printerclaims</a> . Exact speed varies depending on the system configuration, software application, driver, and document complexity.		
<b>Processor</b>	800 MHz		
<b>Memory</b>	1 GB. Expandable to 1.5 GB through 1 GB industry-standard DIMM		
<b>Hard disk</b>	320 GB HP High-Performance Secure Hard Disk (only on D7P69A and CZ245A)		
<b>Print</b>	Quality Resolution Printer languages Typefaces/fonts	HP FastRes 1200 (1200 dpi quality), 600 x 600 dpi with HP Resolution Enhancement technology Black: Up to 1200 x 1200 dpi HP PCL 6, HP PCL 5e, HP Postscript Level 3 emulation, native PDF printing (v 1.4) 105 internal TrueType fonts scalable in HP PCL; 92 internal scalable fonts in HP Postscript Level 3 emulation (Euro symbol built-in); 1 internal Unicode Fonts (Andale Mono WorldType); 2 Internal Windows Vista 8 Fonts (Calibri, Cambria); additional font solutions available via third-party flash memory cards; HP LaserJet Fonts and IPDS Emulation available at <a href="http://hp.com/go/laserjetfonts">hp.com/go/laserjetfonts</a>	
	Duty cycle (monthly, A4) Recommended monthly page volume Print margins (mm)	Up to 300,000 pages 10,000 to 50,000 Top: 2.0 mm. Left: 2.0 mm. Right: 2.0 mm. Bottom: 2.0 mm	
<b>Media handling</b>	<b>Input:</b> Tray 1  Tray 2, 3 Tray 4, 5	<b>Capacity</b> sheets: 100; envelopes: 100; labels: 100  sheets: 500; labels: small quantities <b>CZ244A:</b> optional High-capacity Input tray, tray 4: sheets: 1500 (A4 only), tray 5: sheets: 2000 (A4 only); <b>D7P69A:</b> High-capacity Input tray, tray 4: sheets: 1500 (A4 only), tray 5: sheets: 2000 (A4 only); <b>CZ245A:</b> as D7P69A product; Sheets: Up to 600 sheets. Transparencies: Up to 100 sheets	<b>Weight</b> 60 to 220 g/m <sup>2</sup>  60 to 199 g/m <sup>2</sup> 60 to 199 g/m <sup>2</sup>
	<b>Output:</b> Duplex printing: Automatic (standard)		
<b>Media types</b>	Paper (bond, colour, letterhead, plain, preprinted, prepunched, recycled, rough), labels, cardstock, transparencies		
<b>Interface and connectivity</b>	Standard: <b>CZ244A:</b> 2 Hi-Speed USB 2.0 Host; 1 Hi-Speed USB 2.0 Device; 1 Gigabit Ethernet 10/100/1000T network; 1 Foreign Interface; 1 Hardware Integration Pocket; 2 Internal USB Host; <b>D7P69A:</b> 2 Hi-Speed USB 2.0 Host; 1 Hi-Speed USB 2.0 Device; 1 Gigabit Ethernet 10/100/1000T network; 1 NFC/Wireless (accessory included); 1 Foreign Interface; 2 Internal USB Host; <b>CZ245A:</b> 2 Hi-Speed USB 2.0 Host; 1 Hi-Speed USB 2.0 Device; 1 Gigabit Ethernet 10/100/1000T network; 1 Foreign Interface; 1 Hardware Integration Pocket; 2 Internal USB Host;		
<b>Operating systems compatibility</b>	Windows 8 (32-bit/64-bit), Windows 7 (32-bit/64-bit), Windows Vista (32-bit/64-bit), Windows XP (SP2 or higher) (32-bit/64-bit), Windows Server 2012 (64-bit), Windows Server 2008 (32-bit/64-bit), Windows Server 2008 R2 (64-bit), Windows Server 2003 (SP1 or higher) (32-bit/64-bit), Mac OS X version 10.6.8, 10.7.5 Lion, 10.8 Mountain Lion. For the latest operating system support see: AirPrint™ (support.apple.com/kb/ht4356); Android (android.com); Citrix and Windows Terminal Services (hp.com/go/upd); HP ePrint Software Driver (hp.com/go/eprintssoftware); Linux (hplip.net); Novell (novell.com/print); SAP device types (hp.com/go/sap/drivers); SAP Print (hp.com/go/sap/print); UNIX (hp.com/go/UNIX); UNIX JetDirect (hp.com/go/jetdirectunix_software). LaserJet driver information and support available at: <a href="http://hp.com/support/ljM806">hp.com/support/ljM806</a> ; <a href="http://hp.com/go/hpsc">hp.com/go/hpsc</a> ; <a href="http://hp.com/support">hp.com/support</a>		
<b>Network operating systems compatibility</b>	HP-UX 10.20, 11.x, 11.i; IBM® AIX 3.2.5 or higher; Mac OS X v10.6, OS X Lion, OS X Mountain Lion; Windows 2000; MPE-iX; Citrix® MetaFrame Server; Novell® 5.1 or higher; RED HAT Linux 7.x or higher; Solaris® 2.5 or higher (SPARC® systems only); SUSE Linux 8.x or higher; Windows 2003 SP2+ 64-bit; Windows Server 2003 SP2+; Windows Terminal Services; Windows Vista (32-bit and 64-bit); Windows Vista Ready; Windows XP SP3+ 64-bit; Windows XP SP3+ Home; Windows XP SP3+ Professional; Windows XP SP3+ Professional and Windows Vista; Windows 7 SP1 or greater (32-bit and 64-bit); Windows 8 (32-bit and 64-bit); Windows Server 2008 (32-bit and 64-bit); Windows Server 2008 R2 (64-bit); Windows Server 2012 (64-bit). (For Microsoft IPv6 compatibility use Windows 2003, Windows XP Home, Windows XP Professional and Windows Vista)		
<b>Minimum system requirements</b>	Windows 8, Windows 7 SP1+, Windows Vista, Windows Server 2003 (SP1+), Windows Server 2008, Windows Server 2008 R2 (64 bit), Windows Server 2012 (64-bit), Windows XP (SP2+); CD-ROM or DVD drive, or Internet connection; Dedicated universal serial bus (USB 1.1 or 2.0), or network connection; 200 MB available hard disk space; Operating system compatible hardware system requirements see <a href="http://apple.com">apple.com</a> Microsoft.com. Mac OS X v10.6.8, OS X 10.7.5 Lion, OS X 10.8 Mountain Lion; 1 GB of available hard-disk space; CD-ROM or DVD drive, or Internet connection; Dedicated universal serial bus (USB 1.1 or 2.0), or network connection (Operating system compatible hardware system requirements see <a href="http://apple.com">apple.com</a> )		
<b>Standard software</b>	HP PCL 6 Discrete Printer Driver, Mac SW Link to Web (Mac Installer), Windows Installer		
<b>Control panel</b>	10.9 cm colour LCD with resistive touchscreen; rotating (adjustable angle) display; illuminated capacitive Home button (for quick return to the Home menu); Easy Access USB; Hardware Integration Pocket		
<b>Power</b>	Requirements: Input Voltage: 220 to 240 VAC, 50/60 Hz, 5.5 A		
<b>Dimensions (w x d x h)</b>	Out of package: <b>CZ244A:</b> 1095 x 648 x 635 mm; <b>D7P69A:</b> 1095 x 715 x 1040 mm; <b>CZ245A:</b> 1095 x 715 x 1040 mm; Packaged: <b>CZ244A:</b> 856 x 760 x 978 mm; <b>D7P69A:</b> 856 x 790 x 1368 mm; <b>CZ245A:</b> 856 x 790 x 1368 mm;		
<b>Weight</b>	Out of package: <b>CZ244A:</b> 76.1 kg; <b>D7P69A:</b> 108.4 kg; <b>CZ245A:</b> 108.4 kg; Packaged: <b>CZ244A:</b> 88.84 kg; <b>D7P69A:</b> 130.87 kg; <b>CZ245A:</b> 130.67 kg;		
<b>Printer management</b>	HP Web Jetadmin; HP Utility (Mac)		
<b>Security management</b>	<b>CZ244A:</b> Identity Management: Kerberos authentication, LDAP authentication, 1000 user PIN codes, optional HP Access Control and 3rd party advanced authentication solutions (e.g., badge readers); Network: IPsec/firewall with Certificate, Pre-Shared Key, and Kerberos authentication, Supports WJA-10 IPsec configuration Plug-in, 802.1X authentication (EAP-PEAP, EAP-TLS), SNMPv3, HTTPS, Certificates, Access Control List; Data: Storage Encryption, SSL/TLS, Encrypted Credentials; Device: Security lock slot, USB port disablement, Hardware Integration Pocket for security solutions; Security Management: Compatible with HP Imaging & Printing Security Center; <b>D7P69A:</b> Identity Management: Kerberos authentication, LDAP authentication, 1000 user PIN codes, optional HP Access Control and 3rd party advanced authentication solutions (e.g., badge readers); Network: IPsec/firewall with Certificate, Pre-Shared Key, and Kerberos authentication, Supports WJA-10 IPsec configuration Plug-in, 802.1X authentication (EAP-PEAP, EAP-TLS), SNMPv3, HTTPS, Certificates, Access Control List; Data: Storage Encryption, Secure Erase, SSL/TLS, Encrypted Credentials; Device: Security lock slot, USB port disablement, Hardware Integration Pocket for security solutions; Security Management: Compatible with HP Imaging & Printing Security Center; <b>CZ245A:</b> as D7P69A product;		
<b>Operating environment</b>	Operating temperature: 10 to 32.5°C. Recommended operating temperature: 10 to 32.5°C. Operating humidity: 10 to 80% RH. Operating humidity recommended: 10 to 80% RH. Storage temperature: 0 to 40°C. Storage humidity: 10 to 90% RH		
<b>Acoustics</b>	Acoustic Power Emissions: 7.2 B(A) Acoustic Pressure Emissions: 55 dB(A)		
<b>Certifications</b>	CISPR 22:2008 / EN 55022:2010 (Class A), EN 61000-3-2 :2006 +A1:2009 +A2:2009; EN 61000-3-3 :2008; EN 55024:2010; EMC Directive 2004/108/EC with CE Marking (Europe); other EMC approvals as required by individual countries. Regulatory standards: IEC 60950-1:2005 +A1; EN60950-1: 2006 +A1:1:2009 +A1:2010 +A1:2:2011; IEC 60825-1:2007 (Class 1 Laser/Led Product); EN 60825-1:2007 (Class 1 Laser/Led Product); GS Certificate (Germany, Europe); IEC 62479:2010; EN 62479:2010; Low Voltage Directive 2006/95/EC with CE Marking (Europe); other safety approvals as required by individual countries. ENERGY STAR: Yes		
<b>Warranty</b>	One-year, onsite limited warranty; 24-hour support; 7 days a week phone support. Product: One year, onsite, warranty. Warranty may vary by country as required by law. Go to <a href="http://hp.com/support">hp.com/support</a> to learn about HP award winning service and support options in your region.		

<http://www.hp.com/uk>

© Copyright 2013 Hewlett-Packard Development Company, L.P. The information contained herein is subject to change without notice. The only warranties for HP products and services are set forth in the express warranty statements accompanying such products and services. Nothing herein should be construed as constituting an additional warranty. HP shall not be liable for technical or editorial errors or omissions contained herein.

Published in EMEA 08/13 EEE

