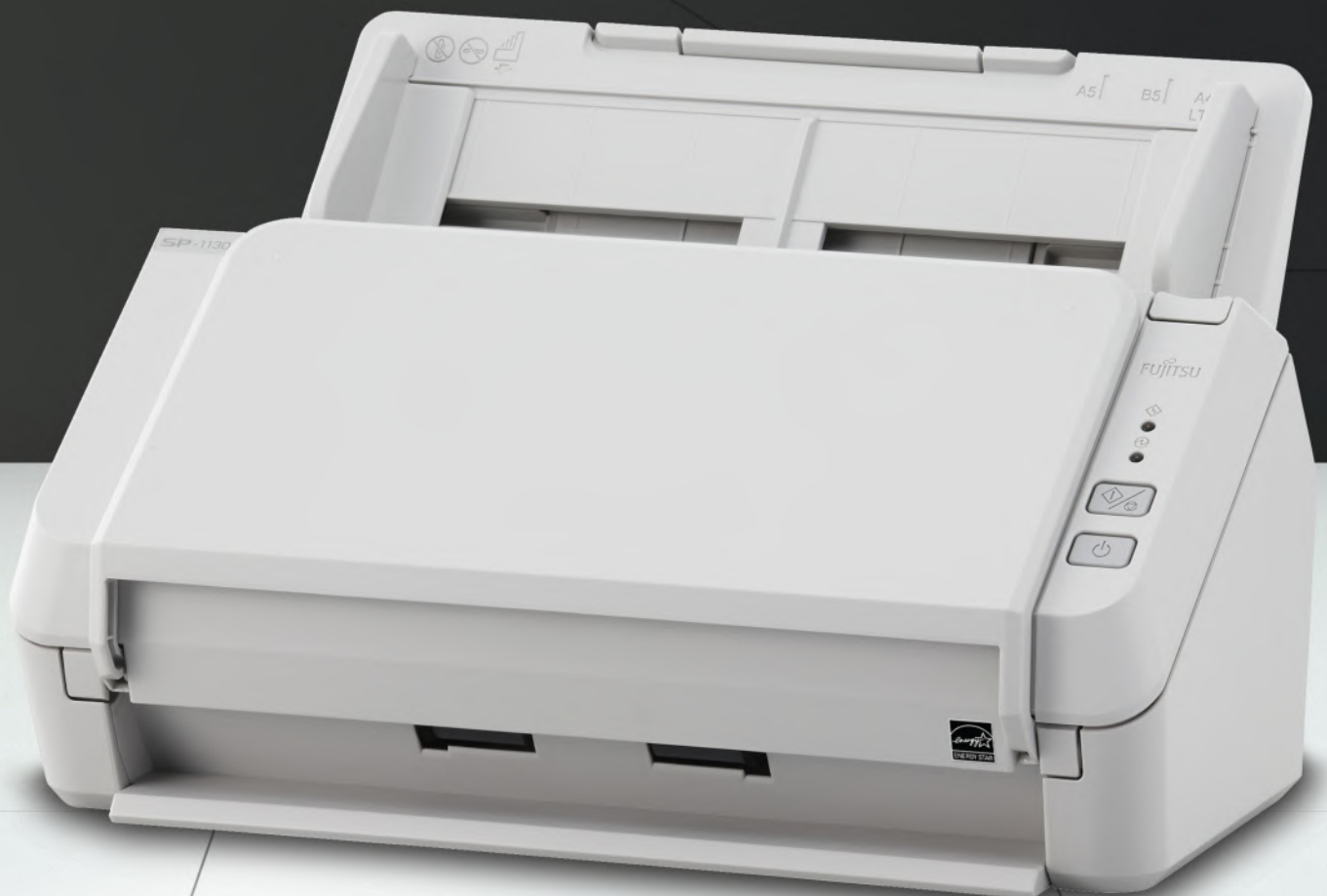


FUJITSU Image Scanner SP-1130

Basic SP Series model for professional use



shaping tomorrow with you

SP-1130 Features

Efficiency gains with sophisticated software

PaperStream IP - Automatically creates the most suitable image data for hassle-free scanning

The PaperStream IP driver, which supports TWAIN / ISIS®, saves the hassle of fine tuning the document for the OCR process. It not only automatically detects the document size, single / double sided and rotation, but also automatically converts the images into exceptionally clean images, accelerating OCR even when scanning wrinkled or soiled documents or documents with a background pattern.

ABBYY™ FineReader™ Sprint*1 – Creates searchable files from your paper documents, allowing you at a later date to find your information easier

The scanned data can be converted to searchable PDF or office documents such as Microsoft® Word to be utilized in day to day work tasks. The OCR processing is able to handle 190 languages, which means it is an especially valuable feature in a mixed-language environment.

Ideal for desktop placement

Compact design

The SP-1130 is compact in size, so it can be used at the desk or at reception where space is limited. Even with its compact size, it is equipped with a brake roller to accurately separate each page, and an ultra-sonic sensor to accurately detect multifeed, so the user can scan without worrying about potential problems.



Operation panel

30 ppm scanning speed model

The SP-1130 helps users finish scanning tasks in a short time without stress, with its 30 ppm (A4 color, duplex 200 / 300 dpi) performance. The automatic document feeder (ADF) holds up to 50 sheets*2 at a time, and the scanning speed is maintained even at 300 dpi.

Support plastic card scanning

The SP-1130 is able to handle various documents from thin to thick paper (50-209 g/m2), as well as plastic cards*3 for various tasks and applications. In the case of over-the-counter services, application forms and plastic ID cards can be scanned at the same time to avoid customers waiting.

Simple and easy-to-use design

The simple and easy-to-use design can minimize the scanning procedures and reduce human-error. The SP-1130 has a simple operation panel with only 2 buttons (Scan / Stop and Power), and after presetting the bundled Presto!™ PageManager™*4, only one push of the scan button is necessary to store document image data instantly.

*1 OCR application developed by ABBYY Ltd.

*2 The user can feed additional documents during scanning.

*3 Plastic cards compatible with ISO7810 with a thickness of 0.76 mm (.030 in.) or less (Embossed plastic cards with total thickness of 1.24 mm (.49 in.) or less). One landscape card scanning at a time.

*4 Image data management / editing application developed by NewSoft® Technology Corporation.

Consumables

Description	Parts number	Description
Roller set ■ Brake roller ■ Pick roller	PA03708-0001	Lifetime: Every 100,000 sheets or one year

SP-1130 Technical Specifications

Description	Specifications
Supported operating systems	Windows® 10, Windows® 8/8.1 (32-bit/64-bit), Windows® 7 (32-bit/64-bit), Windows Vista® (32-bit/64-bit), Windows Server® 2012 R2 (64-bit), Windows Server® 2012 (64-bit), Windows Server® 2008 R2 (64-bit), Windows Server 2008 (32-bit/64-bit)
Scanner type	ADF (Automatic Document Feeder)
Scanning modes	Simplex / Duplex, Color / Grayscale / Monochrome
Image sensor type	Single line CMOS-CIS x 2 (front x 1, back x 1)
Light source	R, G, B LED x 2 (front x 1, back x 1)
Document size	Maximum: A4 Portrait (210 x 297 mm) or Legal (8.5 x 14in.) or 8.5 x 34 in. (215.9 x 863.6 mm) (long page scanning: 3,048 mm (120 in.)) Minimum: A8 Portrait / Landscape (52 x 74 mm) (2.05 x 2.91 in)
Paper weight (thickness)	Paper: 50 to 209 g/m2 (0.06 to 0.26 mm) (.002 x .010 in.) * A8 size: 127 to 209 g/m2 (0.15 to 0.26 mm) Plastic Card: ISO7810 ID-1 type compliant (0.76 mm) (.023 in) or less, embossed plastic cards with total thickness of (1.24 mm) (.049 in) or less
Scanning speed (A4 Portrait) ^{*5} : Color ^{*6} , Grayscale ^{*6} and Monochrome	Simplex: 30 ppm (200/300 dpi), Duplex: 60 ipm (200/300 dpi)
Paper chute capacity (LT Portrait) ^{*7}	50 sheets (A4: 80 g/m2 or 20 lb)
Expected daily volume	3,000 sheets/day
Background colors	White (Hardware, scanned background is gray)
Optical resolution	600 dpi
Output resolution ^{*8} : Color (24-bit), Grayscale (8-bit), Monochrome (1-bit)	50 to 600 dpi (adjustable by 1 dpi increments), 1,200 dpi (driver) ^{*9}
Output format	Color: 24-bit, Grayscale: 8-bit, Monochrome:1-bit
Internal video processing	65,536 levels (16-bit)
Interface	USB2.0
Connector shape	B type
Image processing functions	Auto color detection, Automatic page size detection, De-Skew, Multi-image, Blank page skip, Error diffusion, Dropout color (R, G, B, Saturation), Image emphasis, Advanced DTC, sRGB, Halftone, Smoothing, Split image, Vertical streaks reduction, Digital endorser, Edge correction, Dynamic threshold (iDTC)
Power requirements	AC 100 to 240 V ±10%
Power consumption	Operating: 18 W or less, Sleep mode: 1.6 W or less, Auto standby (OFF) mode: 0.4 W or less
Operating environment	Temperature: 5 to 35 °C (41 to 95 °F), Relative humidity: 20 to 80% (Non-condensing)
Dimensions: Width x Depth x Height ^{*10}	298 x 135 x 133 mm (11.7 x 5.3 x 5.2 in.)
Weight	2.5 kg (5.51 lbs.)
Included software / drivers	PaperStream IP drivers ^{*11} (PaperStream IP (TWAIN), PaperStream IP (TWAIN x64), PaperStream IP (ISIS)), Software Operation Panel, Error Recovery Guide, Presto! PageManager, ABBYY FineReader Sprint, Scanner Central Admin Age
Environmental compliance	ENERGY STAR® and RoHS
Long page scanning ^{*12}	3,048 mm (120 in.)
Included items	AC adapter, USB cable, Setup DVD-ROM

^{*5} Actual scanning speeds are affected by data transmission and software processing times.

^{*6} Indicated speeds are from using JPEG compression.

^{*7} Maximum capacity varies, depending upon paper weight.

^{*8} Selectable maximum density may vary depending on the length of scanned document.

^{*9} Scanning limitations brought about by scanning mode, document size and available memory may occur when scanning at higher resolutions (600dpi or higher).

^{*10} Excluding the ADF paper chute and Stacker.

^{*11} WIA driver is not supported.

^{*12} Capable of scanning documents that exceed Legal sheets in length. However, the scanning of documents that exceed 863 mm (34 in.) in length will be limited to 200 dpi or less.

About Fujitsu Canada, Inc.

Fujitsu is the leading Japanese information and communication technology (ICT) company offering a full range of technology products, solutions and services. As a subsidiary, Fujitsu Canada provides platform products that are based on integrated document management and imaging systems, scalable, reliable and high-performance server, storage, software, point-of-sale, and mobile technologies. Fujitsu Canada offers industry-specific solutions for retail, manufacturing, healthcare, government, education, financial services, and telecommunications sectors.

For more information, please see: solutions.ca.fujitsu.com

Trademark

Fujitsu, the Fujitsu logo and “shaping tomorrow with you” are trademarks or registered trademarks of Fujitsu Limited in Canada and other countries. ABBYY and FineReader are trademarks of ABBYY Software, Ltd. which may be registered in some jurisdictions. ISIS is a registered trademark of EMC Corporation in the United States. Microsoft, Windows, Windows Server and Windows Vista are either registered trademarks or trademarks of Microsoft Corporation in the United States and/or other countries. NewSoft, Presto! and PageManager are either registered trademarks or trademarks of NewSoft Technology Corp.

The statements provided herein are for informational purposes only and may be amended or altered by Fujitsu America, Inc. without notice or liability. Product description data represents Fujitsu design objectives and is provided for comparative purposes; actual results may vary based on a variety of factors. Specifications are subject to change without notice.

Visit the fi Series web site for ordering and purchasing information <http://imagescanner.fujitsu.com/>

Copyright© 2016 Fujitsu Canada, Inc.
All rights reserved.
FPC65-7582-01 05/16
16.0371

Contact

FUJITSU CANADA, INC.

155 University Avenue, Suite 1600
Toronto, Ontario M5H 3B7

Telephone: 1-800-263-8716

Website: <http://www.fujitsu.ca>

Have a question? Email us at: Ask.Fujitsu@ca.fujitsu.com

FUJITSU CANADA, INC.

1000 Sherbrooke Street West, Suite 1400
Montréal, Québec H3A 3R2

Telephone: 1-800-663-0756

Website: <http://www.fujitsu.ca/fr>