



# ScanSnap

## iX1400



Beautifully simple, effortlessly efficient

# Beautifully simple, effortlessly efficient



## Just press the blue button

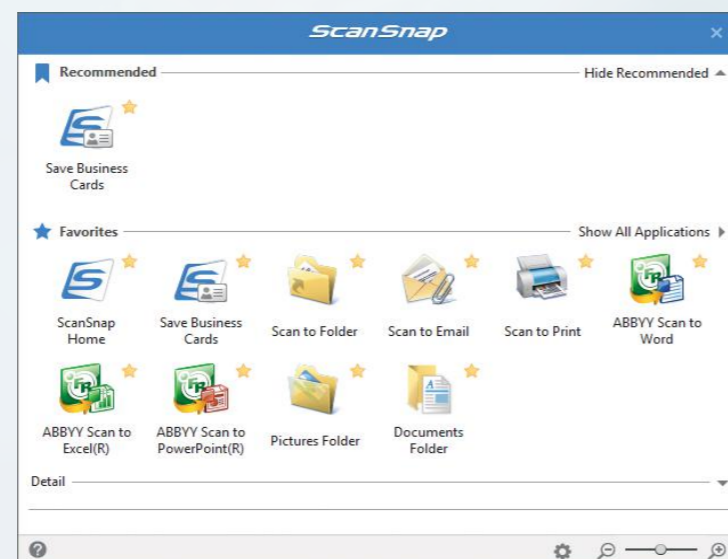
For individuals and IT novices, the beautifully simple iX1400 can digitise, process and organise all your documents from one easy device. You don't need to know IT. You just need to press the blue button.



Paperwork is a necessary part of life. But does it have to be so much work?

The ScanSnap iX1400 offers advanced, yet refreshingly simple technology that anyone can use. Its one-touch scanning is the smarter way to work for busy individuals, turning time-consuming chores into simple tasks at the push of a button. Just scan, save, and share – it's that easy.

With no complex settings to configure, the iX1400 will be up and running from the box in record time. While the Quick Menu function lets you instantly create the type of file you want, whether it's a searchable PDF, editable Word, Excel or PowerPoint, or extracting data from receipts and business cards.



## Form as well as function

Built for modern, clutter-free businesses, the iX1400 is also compact and stylish enough to fit into most workspaces, whether that's an office desk or coffee table. It'll be by your side, wherever your work takes you.

And should you want to make your scanning activities even more efficient, the intuitive ScanSnap Home software allows you to automatically create the files you need, saving them to the places you want, while providing powerful search and retrieval of your scans. Designed by the world's leading scanner manufacturer, the beautifully simple iX1400 makes paper work for you as easily as can be, connecting your worlds with one touch.

For more ScanSnap related information, visit our website at : [www.scansnapit.com](http://www.scansnapit.com)

## The scanning experience you'll love

### Out of the box, ready in minutes

The iX1400 is so easy to set up, anyone can do it. Wave goodbye to complex settings or driver compatibility issues. Just unbox, set up in minutes, and press the blue button to start enjoying one-touch scanning right away. It really is that simple.

### Quick Menu instant file creation

The ScanSnap Quick Menu allows you to instantly scan straight into the applications you know and use. Choose to scan images directly to a folder, email or even a printer.

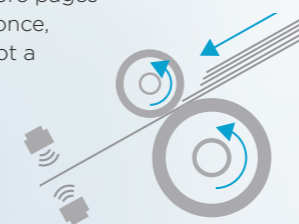


Extract data from receipts and business cards into csv files, or export scans to cloud storage locations. Create searchable PDFs, or instantly open your scan as a fully editable file in Word, Excel or Powerpoint. You can even add other applications to the Quick Menu, the choice is yours.

### Industry-leading reliability

With professional grade feeding technology and ultrasonic sensors, ScanSnap handles multi-page documents with ease.

It can also alert you if two or more pages are fed through the scanner at once, delivering peace of mind that not a single page of your documents will get lost along the way.



## Total document management

### ScanSnap Home software

ScanSnap Home software allows you to easily manage, edit, and utilise scanned data from documents, receipts, business cards, photos and more.



Documents are automatically recognised and grouped according to document type (receipts, photographs, business cards etc.) while folders, tags, and keywords allow you to organise, search and find information more easily than ever before.

For more ScanSnap related information, visit our website at : [www.scansnapit.com](http://www.scansnapit.com)

### Instant, secure connection

No one wants to spend time on installation. The fuss-free USB 3.2 connector plugs straight into your laptop or PC saving you the stress of fiddling about configuring Wi-Fi.

### Fast and easy

Simply open the cover and ScanSnap is ready to go. Scan up to 50 sheets of single or double sided documents with ease at a speedy 40 sheets per minute. With a host of intelligent image processing functions done for you, you can scan confidently without adjusting any settings.

### Compact, stylish, versatile

The sleek ScanSnap iX1400 fits right into a modern working space, wherever you call your desk. The large Automatic Document Feeder is perfect for A4-size documents as well as larger items that can be folded in half. This scanner packs advanced functionality into its beautifully compact size. The two-sided (Duplex) scanning feature will also cut job completion times in half.

### Receipts and business cards are no longer a hassle

Effortlessly scan small documents with the Receipt Guide. Designed to be a comfortable fit even when the cover is closed, it dramatically simplifies document loading before hitting the scan button.



## General Specifications

|   |   |
|---|---|
| <b>Product name</b>                     | <b>iX1400</b>   |
| Scanner type                            | Automatic Document Feeder, double sided scan  |
| Image sensor                            | Colour Contact Image Sensor (Front & Back)  |
| Light Source                            | 3 Colour LED (Red/Green/Blue)   |
| Optical resolution                      | 600 dpi   |
| Scanning Speed (A4 Portrait)            | 40 pages per minute (300 dpi)   |
| Standard Paper Sizes                    | A4, A5, A6, B5, B6, Business Card, Post Card, Letter, Legal   |
| Custom Paper Sizes                      | Minimum: 50.8 mm x 50.8 mm (2" x 2") Maximum: 216 mm x 360 mm (8.5" x 14.17")   |
| Paper Sizes with optional Carrier Sheet | A3, B4, Double Letter, Photographs and all Standard Paper Sizes   |
| Paper Weight                            | 40 g/m <sup>2</sup> to 209 g/m <sup>2</sup> (11 lb to 56 lb) varies according to paper size   |
| Card Scanning                           | Non-embossed Card: 0.76 mm or less<br>Embossed Card : 0.76 + 0.48 mm in landscape orientation (ISO7810 Conforming)  |
| Feeder Capacity                         | 50 sheets of standard A4 (80 g/m <sup>2</sup> ) varies according to paper thickness   |
| Multi-feed Detection                    | Overlap detection, length detection   |
| Image Processing Functions              | Automatic: Size Detection, Colour Detection, Cropping, Deskew, Rotation, Blank Page Detection / Deletion. Image Smoothing, Image Emphasis, Error Diffusion, Edge Correction, JPEG Compression, Vertical Streaks Reduction |
| Output File-types                       | JPEG, PDF, Searchable PDF<br>Password PDF, PDF/A (Windows® only)  |
| USB Interface                           | USB 3.2 Gen 1 / 2.0 / 1.1 (Type-B Connector)  |
| Power Requirement                       | 100 – 240 Volt AC 50/60 Hz  |
| Power Consumption                       | Operating: 17 W or less. Sleep: 1.5 W or less   |
| Operating Environment                   | Temperature: 5°C to 35°C (41°F to 95°F) Relative humidity: 20% to 80% (Non-condensing)  |
| Device Dimensions (W x D x H)           | 292 mm x 161 mm x 152 mm (11.50" x 6.34" x 5.98")   |
| Device Weight                           | 3.2 kg (7.1 lb)   |
| Device Driver                           | ScanSnap specific driver<br>Windows®: Does not support TWAIN / ISIS®<br>macOS®: Does not support TWAIN  |
| Environmental Compliance                | ENERGY STAR® / RoHS   |
| Standard Warranty                       | 1 Year  |

## Software

| Bundled Software  |        |
|---|--------|
| Windows   | macOS® |
| ScanSnap Home <sup>1</sup>  |        |
| ScanSnap Manager  |        |
| ABBYY® FineReader for ScanSnap™ <sup>1</sup>  |        |
| <i>Please note: an internet connection is required to download the bundled software</i> |        |

<sup>1</sup> Includes one User License

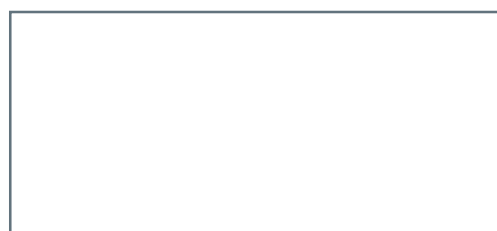
## Accessories

|                                 | Optional Accessories   | Part Number   |
|---------------------------------|--|---------------|
| ScanSnap Type-5 Carry Bag       | Protects the scanner from dust and scratches                                 | PA03951-0651  |
| Document Carrier Sheet (5 pack) | Transparent sleeves for scanning A3, small or damaged documents              | PA03360-0013  |
| Photo Carrier Sheet (3 Pack)    | Transparent sleeves for scanning photographs and postcards                   | PA03770-0015  |
| Cleaning Wipes                  | Specialist ScanSnap cleaning wipes (24 pack)                                 | CON-CLE-W24   |
| Consumable Kit                  | Includes 1x Pick Roller and 1x Brake Roller. Estimated Life up to 200K scans | CON-3656-200K |
| 3 Year Extended Warranty        | Extends the 1 Year Standard Warranty to 3 Years                              | U3-EXTW-DKT   |

Detailed specifications and minimum system requirements can be found at [ScanSnapit.com](http://ScanSnapit.com)  
 ©2021 PFI Limited. All rights reserved. ScanSnap, ScanSnap Home, ScanSnap Manager and their logos are trademarks or registered trademarks of PFI Limited in Japan. ©2021 Fujitsu Limited. All rights reserved. Fujitsu, the Fujitsu logo and Infinity symbol are registered trademarks or trademarks of Fujitsu Limited in Japan and/or other countries. ©2021 ABBYY Software Ltd. All rights reserved. ABBYY and FineReader are trademarks of ABBYY Software, Ltd. which may be registered in some jurisdictions. ©2021 Microsoft Corporation. All rights reserved. Windows®, Word®, Excel®, PowerPoint® and their logos are trademarks or registered trademarks of Microsoft Corporation in the United States and/or other countries. ©2021 OpenText Corporation. All rights reserved. ISIS™ and its logo are registered trademarks of OpenText Corporation in the United States and/or other countries. Other company names and product names are the registered trademarks or trademarks of their respective companies.



PFI Limited, a Fujitsu company, has determined that this product meets the ENERGY STAR® guidelines for energy efficiency. ENERGY STAR® is a registered trademark of the United States.



**PFI (EMEA) Limited**  
 4th Floor, Belmont  
 Belmont Road  
 Uxbridge, UB8 1HE  
 United Kingdom

Tel: +44 (0)20 8573 4444

**PFI (EMEA) Limited**  
 Tower 2  
 Mies-van-der-Rohe  
 Straße 8  
 80807 München  
 Germany

Tel: +49 (0)89 32378 0

**PFI (EMEA) Limited**  
 Viale Monza, 259  
 20126 Milano (MI)  
 Italy

Tel: +39 02 26294 1

**PFI (EMEA) Limited**  
 Camino Cerro de los Gamos, 1  
 28224 Pozuelo de Alarcón  
 Madrid  
 Spain

For more ScanSnap related information, visit our website at :  
[www.scansnapit.com](http://www.scansnapit.com)

