

imagePROGRAF PRO-1100

# PRINT WITH CONFIDENCE. ALWAYS



Show your work with Canon's professional A2 printer, delivering deeper blacks and richer blues for fine-art prints that will stand the test of time.



LUCIA PRO II Pigment ink



12 Single Inks

12 inks



Connectivity

Wi-Fi and Ethernet  
connectivity



Colour LCD screen



Borderless Printing

Borderless printing



Prints up to A2





# imagePROGRAF PRO-1100

Professional 17" Wireless Inkjet Photo Printer

- IMPROVED BLACK DENSITY
- ENHANCED BLUE-DARK SHADES
- IMPROVED MEDIA SUPPORT
- LONGER LIGHT-RESISTANCE
- IMPROVED SCRATCH RESISTANCE



Prints various paper sizes up to **17" x 22"**

**11**  
Individual Inks  
(plus Chroma Optimizer)

**4**  
Monochrome Inks  
(for deeper, richer  
Monochrome prints)

**L-COA PRO**  
High-precision  
Processing Engine



**LUCIA PRO II ink<sup>1</sup>**

New pigment ink system that inherits LUCIA PRO's high image quality and further enhances image robustness and photo art quality.



## The Printer That's Equally Obsessed



# imagePROGRAF PRO-1100

Professional 17" Wireless Inkjet Photo Printer

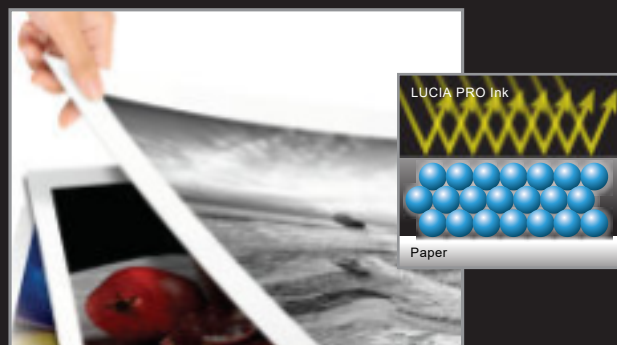
NEW &  
IMPROVED  
INK  
SYSTEM



New pigment ink system that inherits LUCIA PRO's high image quality and further enhances image robustness and photo art quality.<sup>1</sup>

## 1. Improved Print Longevity<sup>2</sup>

Newly developed pigment ink "LUCIA PRO II" uses high light-resistant inks for long-term preservation of printed images.



## 2. Improved Scratch Resistance

New Highly Crystalline Wax reduces abrasiveness without losing image quality and makes handling artwork less worrisome.



## 3. Improvement of Black Density

The new matte black ink formula improves black density and achieves deeper black expression.

## 4. Greater Dark Blue Representation

New colour design has improved reproducibility in blue-dark areas for a wider gamut of colours.



## Wide Colour Gamut

A wider array of colours helps produce a wider colour gamut, achieving improved colour reproduction and image clarity as well as enhanced darker areas.



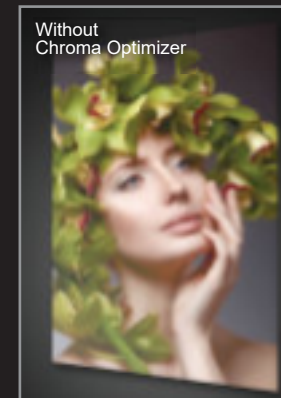
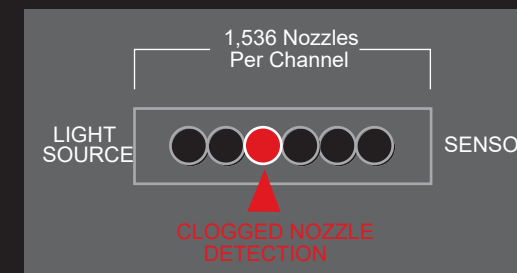
## Air Feeding System

The Canon Air Feed System prevents the sheet in use from being deflected in such a way that the ink falls accurately and in the right place. This uniform level surface allows incredible ink drop accuracy and better image quality.



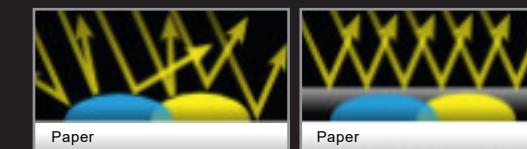
## Anti-clogging Technology and Compensation Function

Ink nozzle conditions are precisely checked with sensors, and when a blockage is detected, another nozzle automatically provides backup. In addition to preventing printing failures due to banding, this also reduces the frequency at which head cleaning is required.



## Consistent reflection of light with Chroma Optimizer

Printing on gloss paper using pigment ink sometimes results in uneven glossiness and bronzing due to the light dispersion caused by the varying height of the adhering ink. Chroma Optimizer solves this problem by evenly coating the surface of the print.



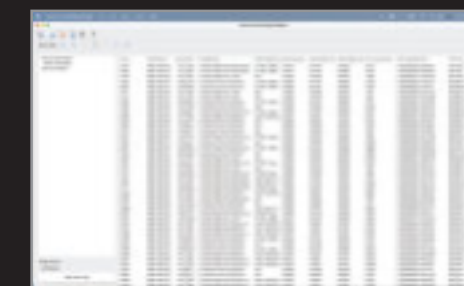
## Professional Print & Layout Software

This powerful software provides professional photographers with intuitive printing solutions. A stand-alone application that also can be used as a plug-in from Digital Photo Professional or Adobe software to support seamless output.



## Accounting Manager

Account for every sheet of paper and the amount of ink that was used. Accounting Manager allows you to accurately assign and track the costs of every single job.



# imagePROGRAF PRO-1100

Professional Photo Printer with Wide Format Up to 17 Inches

## Technical specifications

### PRINTER

Print Features	Advanced Pattern Print, Air Feeding System, AirPrint <sup>®</sup> , Anti-Clogging Technology, Auto Photo Fix, Black & White (Monochrome) Photo Printing, Borderless Printing <sup>1</sup> , Calibration Link, Canon PRINTapp <sup>2</sup> , Canon Print Studio Pro Plug-in, Chroma Optimizer, Colour Density Sensor, Contrast Reproduction, Fine Art Paper Support, Grayscale Photo Printing, Index Print, Mopria <sup>®</sup> Print Service <sup>3</sup> , Non-Firing and Compensation Function, Paper Feed Skew Correction, Photo Printing, Real Time Control of Ink Ejection, Wireless Printing <sup>6</sup>
Printing Capability	Single Sided (Simplex) Printing, Borderless Photo Printing (4" x 6" - 17" x 22")
Print Speed (ESAT) <sup>7</sup>	17" x 22" Bordered Photo (Colour): Approx. 4 Minutes <sup>7</sup> 13" x 19" Bordered Photo (Colour): Approx. 2 Minutes, 25 Seconds <sup>7</sup>
Number of Nozzles	1,536 Nozzles x 12 Inks, Total: 18,432
Droplet Size	Minimum 4 Picolitres Per Ink
Print Resolution <sup>8</sup>	Up to 2400 x 1200 dpi
Media Handling	Rear Tray and Manual Feed Slot
Supported Media Sizes	A5, A4, A3 (13" x 19"), A2, B5, B4, B3, Letter (8.5" x 11"), Legal (8.5" x 14"), Ledger (11" x 17"), Hagaki/Return Hagaki/A3+/L2L/4" x 6", 5" x 7", 9" x 13", 11" x 14", 13" x 19" Super B/US Photo, 16" x 20", 17" x 22", 17" x 25", 7" x 10", 8" x 10", 10" x 12", 12" x 12", 14" x 17", 17" x 22"
Media Compatibility	Plain: Plain Paper; Super High Gloss: Photo Paper Pro Platinum; Glossy: Photo Paper Plus Glossy II, Photo Paper Pro Crystal Grade Semi-Gloss; Photo Paper Plus Semi-Gloss, Photo Paper Pro Luster; Matte: Matte Photo Paper, Photo Paper Premium Matte; Other: Premium Fine Art Smooth, Premium Fine Art Rough, Fine Art "Museum Etching", Greeting Cards, Magnetic Photo Paper, Photo Stickers, Restickable Photo Paper
Paper Capacity	Top Tray: Plain Paper: 150 Sheets (Letter Size) Photo Paper: 4" x 6": 20 Sheets, 8.5" x 11" (Letter) / 8" x 10": 10 Sheets, 13" x 19" (A+) / 17" x 22": 1 Sheet Manual Feed Slot: Photo Paper: All Sizes: 1 Sheet
Printable Paper	Maximum Length: 129"
Supported Media Thickness/Weight	Top Tray: Maximum: 0.3 mm Manual Feed Slot: 0.1 mm - 0.7 mm
<b>GENERAL</b>	
Connectivity	Hi-Speed USB, Wi-Fi <sup>®</sup> / Wireless <sup>6</sup> , Ethernet 10 / 1000
Wireless Information <sup>2</sup>	Wireless Standard: IEEE802.11 b/g/n/a/ac Wireless Security: WPA-PSK, WPA2-PSK, WPA3-SAE Wireless LAN Frequency Band: 2.4 GHz/ 5 GHz Access Point Mode Capable: Yes Wireless Direct Connection Capable: Yes
Display	3.0" LCD
OSCompatibility <sup>10</sup>	Windows: Windows 11, Windows 10, Windows 8.1, Windows 7 SP1, Windows Server 2022, 2019, 2016, 2012 R2, 2008 R2 SP1 Mac: mac OSv14 - macOSv11.7.10 Mobile Operating Systems: iOS <sup>®</sup> , Android <sup>™</sup> , ChromeOS
Mobile Apps & Plug-ins (iOS <sup>®</sup> / Android <sup>™</sup> )	AirPrint <sup>®</sup> CanonPRINTapp Mopria <sup>®</sup> Print Service <sup>3</sup>
Software & Plug-in <sup>9</sup>	imagePROGRAFPRO-1100 17" Professional Wireless Inkjet Photo Printer Driver Setup Software & User Guide CD Canon Professional Print & Layout Management Tools: • Quick Utility Toolbox • Media Configuration Tool • Accounting Manager • Device Management Console
Warranty <sup>10</sup>	1-Year Limited Warranty with Instant Exchange Program

### INK INFORMATION

Ink System	11 Individual Pigment-Based Ink System plus Chroma Optimizer, LUCIA PRO II Pigment Ink System		
Compatible Ink Tanks	PFI-4100 MBK	Matte Black Ink Tank	6776C001
	PFI-4100 PBK	Photo Black Ink Tank	6777C001
	PFI-4100 GY	Gray Ink Tank	6783C001
	PFI-4100 PGY	Photo Gray Ink Tank	6784C001
	PFI-4100 B	Blue Ink Tank	6786C001
	PFI-4100 C	Cyan Ink Tank	6778C001
	PFI-4100 PC	Photo Cyan Ink Tank	6781C001
	PFI-4100 M	Magenta Ink Tank	6779C001
	PFI-4100 PM	Photo Magenta Ink Tank	6782C001
	PFI-4100 Y	Yellow Ink Tank	6780C001
	PFI-4100 R	Red Ink Tank	6785C001
	PFI-4100 CO	Chroma Optimizer Ink Tank	6787C001
Ink Fill Volume	PFI-4100 Inks: 80.0 ml (each)	PFI-4100CO: 80.0 ml (each)	

DISCLAIMERS: SPECIFICATIONS ARE SUBJECT TO CHANGE WITHOUT NOTICE. ALL VIEWSCREEN AND OUTPUT IMAGES ARE SIMULATED.

- Newly developed inks were used for 11 of the 12 inks except for matte black.
- Based on accelerated testing by Canon in dark storage under controlled temperature, humidity, and gas conditions, simulating storage in an album with plastic sleeves. Canon cannot guarantee the longevity of prints; results may vary depending on printed image, drying time, display/storage conditions, and environmental factors.
- AirPrint functionality requires a compatible iPad, iPhone, or iPod Touch device running iOS7.0 or later, and an AirPrint-enabled printer connected to the same network as your iOS device.
- Papertypes NOT supported for borderless printing are as follows: Photo Stickers.
- Requires Android mobile device with Android 4.4 operating system or later with the Mopria Print capability, operating at 2.4GHz or 5.0GHz. Wireless performance may vary based on terrain and distance between the printer and wireless network clients.
- Photo print speed is based on the default setting using ISO/JIS-SCIDN2. Print speed may vary depending on system configuration, interface, software, document complexity, print mode, page coverage, type of paper used etc.
- When using Canon Photo Paper Pro Luster (LU-101).
- Internet connection required during software installation.
- Warranty programs are subject to certain conditions and restrictions. See [www.canon.co.uk/support/](http://www.canon.co.uk/support/) for details

Canon alliance with third parties for more supported paper types.



Hahnemühle



Windows 11



Canon

**PRINT WITH CONFIDENCE.  
ALWAYS**

**ImagePROGRAF PRO-1100**

Show your work with Canon's professional A2 printer, delivering deeper blacks and richer blues for fine-art prints that will stand the test of time.

**Sales Start Date: September 2024**



## Product details

Product Name	Mercury Code	EAN Code
imagePROGRAF PRO-1100	6856COO5AA	4549292240870

## Consumables

Product Name	Mercury Code	EAN Code
<b>Standard size</b>		
PFI-4100M BK	6776C001AA	4549292237955
PFI-4100 PBK	6777C001AA	4549292238020
PFI-4100 C	6778C001AA	4549292238075
PFI-4100 M	6779C001AA	4549292238129
PFI-4100 Y	6780C001AA	4549292238174
PFI-4100 PC	6781C001AA	4549292238242
PFI-4100 PM	6782C001AA	4549292238303
PFI-4100 R	6785C001AA	4549292238600
PFI-4100 B	6786C001AA	4549292238655
PFI-4100 GY	6783C001AA	4549292238501
PFI-4100 PGY	6784C001AA	4549292238556
PFI-4100 CO	6787C001AA	4549292238709
MC-20 OS	0628C002AA	4549292040210

**PRINT WITH CONFIDENCE.  
ALWAYS**

**ImagePROGRAF PRO-1100**

Show your work with Canon's professional A2 printer, delivering deeper blacks and richer blues for fine-art prints that will stand the test of time.



## Measurement / logistic information

Product Name	Mercury Code	Pack Style	Quantity per pack	Length (mm)	Width (mm)	Height (mm)	Gross Weight (kg)	Net Weight (kg)
imagePROGRAF PRO-1100	6856COO5AA	Individual	1	960	550	410	38.5	38
		Pallet (Upper)	4	1120	980	970	168.55	385
		Pallet (Bottom)	4	1110	960	830	156.45	385

## What's in the box

### imagePROGRAF PRO-1100

- imagePROGRAF PRO-1100 A2 printer
- 12 individual ink tanks
- Print head
- Power cord
- Starter guide