

The QL-720NW offers IT managers a professional multi-user networked solution for label printing in busy offices.

Effortless label printing - for all applications

The QL-720NW uses Brother DK label rolls. Supplied on a spool that incorporates a roll guide, this ensures that the label is always installed correctly, and recognises the size of label inserted, and you get none of the alignment problems associated with printing labels in a traditional printer. So whether you are printing just one label, or several at a time, the Brother QL-720NW ensures each label prints perfectly, time after time.

Technical Specifications

Items included

QL-720NW Professional Label Printer
2 x starter rolls:
- 29 mm x 90 mm standard address labels (100 labels)
- 62 mm continuous length paper tape (8 metres)
USB and power cables
CD-ROM containing label design software, printer drivers and user guides
Quick setup guide and warranty card

QL-720NW Label printer

Dimensions	128 mm(W) x 236 mm(D) x 153 mm(H)
Weight	1.20kg (excluding DK roll)
Control panel buttons	4: (power, WiFi, feed, cut)
Cutter	Durable auto cutter
Power supply	Internal power supply
Print method	Direct thermal
Roll type	DK rolls (DK die-cut labels / DK continuous length tape)
Max. roll / print width	62 mm / 59 mm
Min. /Max. label length	12.7 mm / 1 metre
Print head resolution	300 dpi / 720 dots
Print speed	150 mm/sec : 93 standard address labels/min (USB)
Interface	10/100 Base TX Wired LAN : USB 3.0 (full speed) IEEE 802.11b/g/n Wireless LAN

Software

	P-touch Editor Lite LAN	P-touch Editor 5
Font support / fonts supplied	All installed truetype fonts	All installed truetype fonts / 17
Font styles	4 styles: Normal, Bold, Italic, Underline	11 styles: Normal, Bold, Italic, Outline, Shadow, Shadow Light, Horizontal, Surround, Frame Out, Inverted Text, Underline
Number of frames	10	126
Image file formats support	BMP, JPG, JPEG, PNG, TIF, GIF, DIB, WMF, EMF, ICO	BMP, JPG, JPEG, PNG, TIF, GIF, DIB, WMF, EMF, ICO
Screen capture	Yes	Yes
Multi line printing	Yes	Yes
Multi block printing	Yes	Yes
Vertical printing	Yes	Yes
Rotate printing	Yes	Yes
Number of copies	2 - 200	2 - 9999
Mirror printing	No	Yes
Sequential numbering	1 - 200 / A - Z / a - z	1 - 5000 / A - Z / a - z
Barcode protocols	No	CODE39, CODE128, UCC/EAN-128 (GS1-128), ITF(I-2/5), CODABAR (NW-7), UPC-A, UPC-E, EAN-13 (JAN13), EAN-8, ISBN-2 (EAN-13 AddOn2), ISBN-5(EAN-13 AddOn5), POSTNET, Laser Bar Code, GS1 DataBar (RSS) (Omnidirectional, Truncated, Stacked), PDF417, QR Code, Micro QR code, Data Matrix, Maxicode
Database / file link support	No	csv, txt, mdb, xls, Microsoft SQL Server Database
Add-in support	No	Microsoft Word / Excel / Outlook (Office 2000/2003/2007/2010)
Automatic date and time printing	No	Yes
Languages	English / Danish / Dutch / French / German / Italian / Norwegian / Portuguese / Spanish / Swedish / Finnish / Czech / Polish / Hungarian / Simplified Chinese / Slovak / Slovene / Romanian / Croatian / Bulgarian / Russian / Turkish / Japanese / Traditional Chinese / Korean / Traditional Chinese / Korean / Thai / Vietnamese	English / Danish / Dutch / French / German / Italian / Norwegian / Portuguese / Spanish / Swedish / Finnish / Czech / Polish / Hungarian / Simplified Chinese / Russian / Turkish / Japanese / Arabic / Thai / Vietnamese

System requirements PC/Mac®

Operating System	Windows® XP SP3 or higher, Windows Vista® Windows® 7, Windows Server® 2003, Windows Server® 2008/2008 R2 Mac OS X 10.5.8 - 10.7
Minimum CPU	As recommended by operating system specification
Hard Disk Free Space	Windows®:70MB or more Mac:200MB or more
USB Port	USB Spec. 1.1, 2.0 or 3.0 protocol
Wireless LAN	IEEE 802.11b/g/n
Wired LAN	10/100 BASE-TX
Graphics	800x600 pixels / 16 bit colour depth minimum
Other	CD-ROM / DVD-ROM drive



QL-720NW

brother
at your side



Professional Wired & Wireless Network Label Printer

Having both wired and wireless networking, the QL-720NW is the professional solution for labelling on demand.

www.brother.co.uk

- Built-in 10/100 Base-TX network port
- Built-in IEEE 802.11 b/g/n wireless LAN
- Print up to 93 labels/minute and up to 300 x 600 dpi
- Built-in automatic label cutter
- Includes 2 rolls of labels and software



Contact:

brother
at your side

Brother UK Ltd
Audenshaw, Manchester, M34 5JD
Telephone: 08444 999444
Fax: 0870 8304031
Website: www.brother.co.uk
ZLFTQL720NWU1





Give your company a professional image

Achieve a more professional finish and improve office efficiency through the use of labelling. Envelopes, packages and parcels can be professionally addressed using one of the many sizes of label available, and can even include your business logo if required. Within your organisation, ensure important information can be located quickly through the clear identification of files, folders, CD and DVD discs.



10/100 BASE-TX NETWORK
Offers the most reliable networking connection for sharing between multiple users.



EASY TO CHANGE ROLLS
Each roll is supplied on a spool that simply slots into the correct position in the printer every time.



WIRELESS & USB INTERFACES
Connect to one PC using the USB interface, or multiple PC's using wireless LAN.



PRINT LABELS THE SIZE YOU NEED
Create labels from 12.7mm up to 1 metre in length, using the built-in automatic cutter.



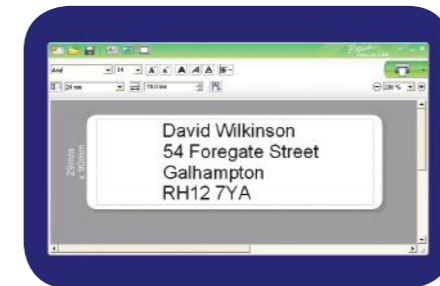
UP TO 300 x 600 DPI PRINT RESOLUTION
Produce easy-to-read labels with crisp text and high quality graphics.



UP TO 93 LABELS/MINUTE
If you are printing one or several labels at a time, the QL-720NW will have them ready in just a few seconds.

Professional built-in wired & wireless networking

Networked devices offer much more flexibility than a single user solution. Multiple users can now connect to one machine, so all can benefit by producing professionally printed, customised labels whenever required. By offering both wired and wireless networking as standard, the label printer can be placed anywhere within your organisation.



P-touch Editor Lite LAN

This networked label design software is easy to set up and use. Simply copy the files to a shared network drive that all users have access to, and when first run it will automatically find the networked QL-720NW and place a shortcut on the user's PC. No printer driver or software needs to be installed on each user's PC.



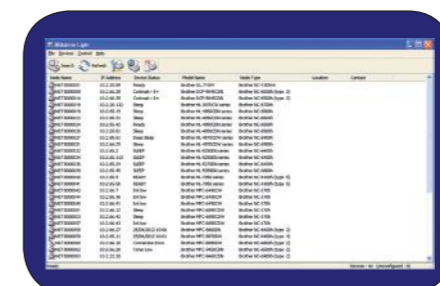
P-touch Editor 5

This professional label design software offers integration with Microsoft Word, Excel and Outlook so you can print labels directly from these applications. Simply highlight the address, text or information you require, then click the "P-touch" icon in the toolbar to print your label immediately. Barcodes, graphics, frames and other information can be added to your labels, whatever your requirements may be.



Brother iPrint & Label

With the free Brother iPrint & Label app, you are now able to quickly and easily create and print labels directly from your iOS or Android device to your Brother QL-720NW. Available through your device's app store.



BR Admin Light

Currently used by network administrators to configure Brother inkjet and laser printers, this powerful software can now also be used to set-up and install the QL-720NW onto your corporate network, making one solution for all Brother networkable products.



Pre-Sized Paper Labels



Continuous Label Tape

