



**XEROX®**

Technology | Document Management | Consulting Services

colour laser printer

Small size,  
**great colour,**  
exceptional value



# Phaser® 6125/6130

## Colour Laser Printers

### Big news in colour printing.

Xerox makes colour the easy choice with the refreshingly office-friendly, value-packed Phaser 6125 and Phaser 6130 colour laser printers. They're compact printing solutions powerful enough to handle all of your office printing demands with ease.



### Productive performance

**Phaser 6125/6130 printers deliver the performance your workgroup needs to make quick work of every print job.**

- Don't let the low price fool you. Network-ready Phaser 6125/6130 printers mean business for your small office or workgroup, providing real-world print productivity and a host of built-in features.
- Superior laser printing gets your jobs out fast, with print speeds as quick as 12 ppm for colour and 16 ppm for black and white.
- When you're ready to print, these printers jump in to action, with a first-page-out time as fast as 14 seconds for black and white, 17 seconds for colour.
- With a 333 MHz processor and 64 MB standard memory for the Phaser 6125 and 128 MB of memory (expandable to 1,152 MB) for the Phaser 6130, these printers quickly handle complex print jobs – even pages with graphics, photos and charts.

### Outstanding colour

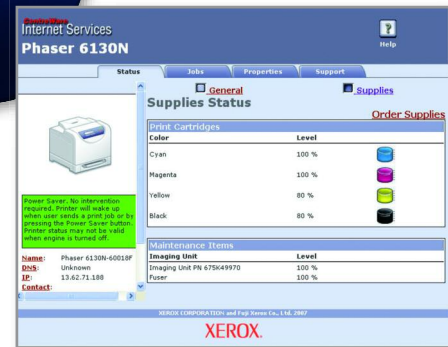
**Colour or black and white, Phaser 6125/6130 printers take your office printing seriously, delivering outstanding results page after page.**

- A print resolution of up to 600 x 600 x 4 dpi delivers an amazing 16 shades of colour per pixel. That means a wider colour range for more impressive business graphics.
- Unique Xerox Emulsion Aggregate High Grade (EA-HG) toner technology – with particles engineered to have uniform size and shape – gives you crisp text and printed images with superior detail and clarity. It's the same high-quality toner used in our professional graphic-arts colour devices.
- The Phaser 6130 printer includes true Adobe® PostScript® 3™ and PCL6 print languages to ensure your jobs are printed accurately every time.
- PANTONE® Colour approved solid colour simulations and Xerox colour correction technology provide easy tools for precisely matching the colours of important business assets, such as company logos.

The intuitive front panel interface gives users quick and easy access to the printer's built-in features and settings.



Quickly check toner levels on the printer's front panel display or at your computer.



## Technology that makes printing easy.

### Easy in the office...

A pure pleasure to operate, Phaser 6125/6130 printers always provide maximum ease of use.

- The standard 250-sheet paper tray supports a wide range of custom media and sizes, from labels to card-stock to envelopes. A convenient manual feed slot lets users feed single-sheet media and envelopes without opening and loading the paper tray.
- PrintingScout®\* works like a behind-the-scenes troubleshooter, delivering instant pop-up messages right to your desktop if print issues arise.
- Super-quiet operation lets you keep your printer nearby for distraction-free convenience.
- Optional RAM storage on the Phaser 6130 lets you store frequently printed documents on the device for quick and easy walkup printing. It also adds useful features like collating and proof printing, and increases security by requiring a password before printing.
- The Run Black feature lets Phaser 6125/6130 printers keep printing in black and white even if they run out of colour toner.

### ...easy on the network

Phaser 6125/6130 printers easily fit your network and your workgroup, making more people more productive.

- Easy installation onto the network and pre-loaded toner cartridges make this printer virtually plug-and-play. It's so easy, you'll have it up and printing in minutes.
- The CentreWare IS internal web server lets users check the status of a print job or manage the device without leaving their computers.
- The Phaser 6130 supports Apple Bonjour™ (standard) and includes easy-to-use print drivers for both PCs and Macs, making it perform beautifully in mixed environments.
- Get additional network protocols and security features, including IPv6 support, with the optional multi-protocol network card (available on Phaser 6130).

Only four replacement items: the ultra-slim, easy-to-load toner cartridges that come with far less packaging and take up substantially less storage space.



\* Phaser 6130 only



	Phaser 6125	Phaser 6130
<b>Speed</b>	Up to 12 ppm colour / 16 ppm black and white	
<b>Duty cycle</b>	Up to 40,000 pages / month <sup>1</sup>	
<b>Paper Handling</b>	<b>Tray 1:</b> 250 sheets, Custom sizes: 76.2 x 127 mm to 216 x 355.6 mm <b>Manual Feed Slot:</b> 1 sheet, Custom sizes: 76.2 x 127 mm to 216 x 355.6 mm	
Paper output	150 sheets	
<b>Print</b>	As fast as 17 seconds colour / 14 seconds black and white	
First-page-out time	As fast as 17 seconds colour / 14 seconds black and white	
Resolution (max)	600 x 600 x 4 dpi	
Processor	333 MHz	
Memory (std / max)	64 MB/ 64 MB	128 MB / 1,152 MB
Connectivity	10/100 Base-TX Ethernet, USB 2.0	
Mac OS® support	NA	Standard
Page Description Languages	Host-Based	PCL® 6 emulation, Adobe® PostScript® 3™
Print features	Skip blank pages, N-up, Fit to new page size, Booklet printing <sup>2</sup> , Watermarks <sup>2</sup> , Poster <sup>2</sup>	
		Banner sheets <sup>2</sup> , Secure Print <sup>3</sup> , Proof Print <sup>3</sup> , RAM collation <sup>3</sup>
<b>Warranty</b>	One year on-site warranty	

<sup>1</sup> Print volume uniformly distributed over 30 days

<sup>2</sup> Accessed via PCL driver on Phaser 6130

<sup>3</sup> Requires minimum 256 MB RAM

#### Device Management

CentreWare® IS Embedded Web Server, CentreWare Web, PrintingScout®\*, Email alerts

#### Print Drivers

Windows® 2000/2003 Server/XP/XP Home Edition (SP1 or higher), Vista, Mac OS®X version 10.2 or higher\*, Linux: SUSE™ 9.2/9.3, Turbo Linux™ 10, Red Hat® ES3/ES4, Fedora™ Core 1, Yellow Dog 3.X

#### Font Support

PostScript® fonts: 136; PCL® fonts: 81

#### Media Handling

Media weights: 64–220 gsm  
Manual two-sided printing: 64–164 gsm  
Media types: Plain paper, glossy coated, envelopes, labels, card stock, business cards

#### Maximum Printable Area

208 mm x 348 mm (5 mm border)

#### Colour Standards

PANTONE® Colour approved solid colour simulations, Xerox Colour Correction, ICC Profile

#### Operating Environment

Temperature: Storage: 0° to 35° C, operating: 10° to 32° C  
Humidity: 15% to 80%  
Sound pressure levels:  
Printing: 51.6 dB(A)  
Standby: 25.7 dB(A)  
Sound power levels: Printing: 6.46 B, Standby: 4.30 B  
Warm-up time: 30 seconds or less

#### Electrical

Power: 220–240 VAC, 50/60 Hz  
Power consumption: Standby: <50 W  
Printing: 280 W or less  
Power save: 5 W or less  
ENERGY STAR® qualified

#### Dimensions (WxDxH)

400 x 394 x 389 mm  
Weight: 17.2 kg

#### Certifications

FCC Part 15, Class B, Listed UL 60950-1/  
CSA 60950-1-03, CE Mark applicable to Directives 73/23/EEC and 89/336/EEC, Section 508 ADA

#### Phaser 6125

##### Supplies

Toner Cartridge<sup>1</sup>:  
Black: 2,000 std. pages 106R01334  
Cyan: 1,000 std. pages 106R01331  
Magenta: 1,000 std. pages 106R01332  
Yellow: 1,000 std. pages 106R01333

Printer ships with 500 page<sup>1</sup> black and colour toner cartridges

#### Phaser 6130

##### Supplies

Toner Cartridge<sup>1</sup>:  
Black: 2,500 std. pages 106R01281  
Cyan: 1,900 std. pages 106R01278  
Magenta: 1,900 std. pages 106R01279  
Yellow: 1,900 std. pages 106R01280

Printer ships with 1,000 page<sup>1</sup> black and colour toner cartridges

#### Options (Phaser 6130 only)

256 MB Phaser Memory 097S03743  
512 MB Phaser Memory 097S03635  
Multi-Protocol Network Card 097S03745  
Wireless Network Adapter  
–European Power Converter 097S03741  
–UK Power Converter 097S03742

<sup>1</sup> Average Continuous Composite CMY Yield in accordance with ISO/IEC 19798. Yield will vary based on image, area coverage and print mode.

\* Phaser 6130 only



**Call today.** For more information, call  
**00 800 9000 9090** or visit us at  
**[www.xerox.com/office](http://www.xerox.com/office)**