

C8000 Series

OKI
PRINTING SOLUTIONS



The compact A3 colour printers
delivering huge business benefits

C8600n
C8600dn
C8600cdtn
C8800n
C8800dn
C8800cdtn



A3/A4 PRINTS



COLOUR/MONO



1-10 USERS



High Definition Color



C8600 & C8800



Half the size
of competitor
A3 printers

Small in size & cost. Big in productivity & professionalism

Never before has fast, A3 colour printing been so outstandingly affordable. Never before has an A3 colour printer had such a remarkably small footprint. Especially one that can be networked. It's a groundbreaking combination from the specialists in printed communications for business.

The C8000 Series from OKI Printing Solutions. Small footprint. Giant step forward in business A3 printing.



QUICK OVERVIEW



1-10 USERS



COMPACT SIZE

Half the overall size of other A3 colour printers



SINGLE PASS PRINTING

Straight, smooth paper path requires less user intervention and greater reliability



RANGE OF MEDIA HANDLING

Handles banners, business cards and CD labels



HIGH PRINT SPEED

26ppm colour/32ppm mono in A4
15ppm colour/17ppm mono in A3



HIGH DEFINITION TONER

Deeper colour, finer detail, high gloss feel

From A6 to A3, from office printing and point-of-sale to presentations and sales material, take greater control by doing it all in-house



DUPLEX PRINTING



TEMPLATE MANAGER



HEAVYWEIGHT MEDIA (200gsm)

COMPACT

A colour revolution – the most compact A3 colour printers ever seen

These A3 colour printers pack outstanding performance, yet are just half the size of other A3 printers. So any business can gain extra floor space without sacrificing speed, output or functionality. And being quiet, the printers can sit close to the desktop for added convenience and greater office efficiency.

AFFORDABLE

A major breakthrough in cost vs. performance

Now there's nothing to stop any business enjoying high quality A3 colour printing. These highly affordable printers deliver low cost colour printing – significantly lower than A3 inkjet competitors. There's no penalty either when printing in mono, with the cost per copy being similar to mono-only devices. And as the C8000 Series is network-ready, the printer's low cost printing can be shared by users for extra cost savings.

FAST

Fast printing to enhance business efficiency

The speed of the C8000 Series will maintain working momentum and keep every organisation time-efficient and competitive. The time to first page is a brief 10 seconds and print speeds are 26ppm colour/32ppm mono in A4 and 15ppm colour/17ppm mono in A3. The printers come with Hi-Speed USB2 connectivity, as well as built-in networking capability to enable fast workgroup printing.

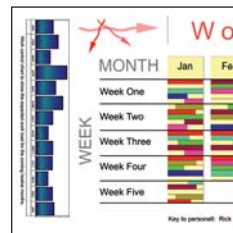
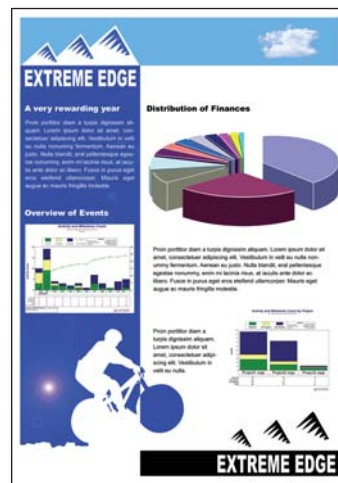
PRINT UP TO A3



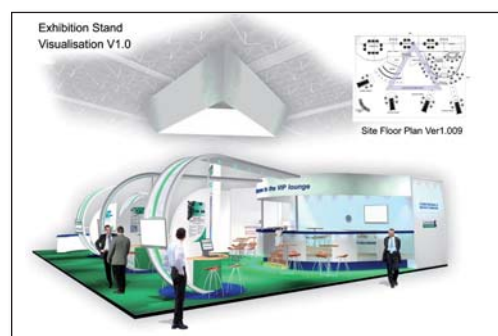
DL postcards



A4 Booklets



Spreadsheets, balance sheets and presentations



Architectural plans

The C8800 printer offers PostScript for printing from a greater range applications and easier printing

PRINT CREATIVELY



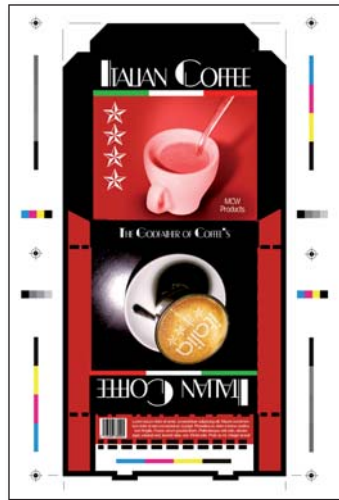
Business and loyalty cards



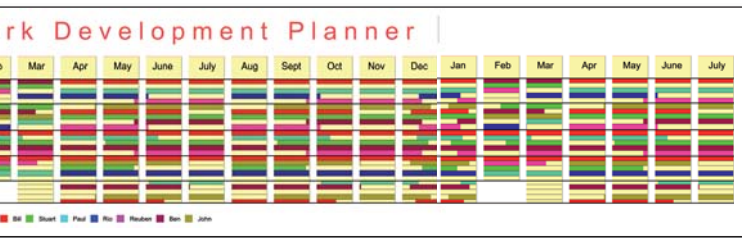
CD Solutions



Postcards, flyers and small booklets



Packaging



Banners



Menus and price guides



Print capability of creative of PDFs

VERSATILE

Handles many different documents with the same professional results

The C8000 Series handles various document sizes and formats with ease. In fact, these printers are so flexible that they can print from A6 to A3 on a range of media up to 200gsm. Duplex capability allows double-sided printing to produce booklets and save paper, while Template Manager 2006 enables the creation of a range of professional-looking documents in-house. This means perfect results when printing banners, posters, CD labels, business cards and more – helping every business to control its image and costs.

EXCELLENT RESULTS

Unique technology and features for better looking documents

Every colour document benefits from ProQ2400 Multi-level technology and our unique microfine High Definition Toner. These have been developed to work together to give greater depth of detail and colour to printed documents and a high gloss finish. Photo Enhance, selectable within the driver, allows users to print impressively sharp, photo-like pictures on ordinary office paper. The C8800 printer offers PostScript capability for printing from a greater range of creative applications and easier printing of PDFs.

HIGH DEFINITION COLOR



Technology without equal. Printing without effort

High Definition Color is OKI Printing Solutions' own unique collection of market defining hardware and software technologies. Together, these components deliver unsurpassed colour printing... simply, intelligently, perfectly.

As the specialists in business printing solutions and leaders in colour printing, we can be trusted to deliver. Great colour starts with OKI Printing Solutions.

UTILITY SUITE



Unlock printing power and maintain business control

The C8000 Series Utility Suite is a unique set of software designed to help users get the most out of their printer. Below are four of the advanced utilities that deliver increased printing power and management control. For a complete list of utilities refer to the product specification table overleaf.

Template Manager 2006

This powerful software program makes life easier in the office by providing ready-made templates for many kinds of stationery and promotional materials such as labels, business cards, banners & CD/DVD labelling. The unique Editing Suite allows the freedom to create new templates for specific media or vertical industry specific documents and to make it even easier the software automatically matches the document with the correct media. These templates can also be shared across networks for design/brand consistency.

PrintSuperVision

This system allows IT support staff to monitor all business printers within the firewall, regardless of printer make. Access is given to networked printer

data for monitoring, reporting and managing networked printers. The user interface to this system is web browser based, making it simple to use.

Print Control

Print Control is a job accounting and reporting program which enables network administrators to track printer usage and control costs. This easy to use utility captures details such as number of printouts, whether colour or mono, the paper type and size and the consumables used. Printer access can be restricted to authorized individuals or groups, and pre-defined cost limits can be set, denying further access once these print limits have been reached.

Document Security

The C8800 is supplied with a series of tools to help protect and secure confidential documents. Data can be encrypted within the driver to prevent files being reprinted by others and a PIN code can be applied to a print job to ensure only those with access can print. In addition, the secure erase function protects documents from being recovered and re-printed from the internal hard disk.

THE C8000 SERIES FEATURES AT A GLANCE

	C8600n	C8600dn	C8600cdtn	C8800n	C8800dn	C8800cdtn
Colour print speed (A4/A3)	26/15ppm					
Mono print speed (A4/A3)	32/17ppm					
Paper size	A6, A5, A4, A3, A3 banner					
Paper capacity	300 + 100		300 + 530 + 100	300 + 100		300 + 530 + 100
Duplex (for double-sided printing)	○(43226003)	•	•	○(43226003)	•	•
2nd paper tray (for 930 sheet max paper capacity)	○(43231803)		•	○(43231803)		•
Cabinet	○(01200801)		•	○(01200801)		•
Optional Memory	N/A			○ 256MB (01182901) ○ 512MB (01182902)		
Hard Disk Drive	N/A			○(01207701)		
Mac/Windows support	•	•	•	•	•	•
Printer language	Windows/Mac Host Based Printing Solutions			PCL/PostScript		

• Standard ○ Optional

The C8000 Series Colour and Mono Printers

		C8600n	C8600dn	C8600cdtn	C8800n	C8800dn	C8800cdtn
Order number		01196901	01197001	01197101	01205301	01205401	01205501
Speed & throughput	A4 Print speed	26ppm colour, 32ppm mono					
	A3 Print speed	15ppm colour, 17ppm mono					
	Time to first print	9.5 seconds mono 10 seconds colour					
	Warm up time	up to 90 seconds from power on & up to 75 seconds from power save					
	Processor speed	PowerPC405 200MHz			PowerPC750 500MHz		
Print quality	Resolution	ProQ2400 Multi-level technology 1200 x 600dpi					
	Enhancements	Auto Colour Balance, Photo Enhance via Driver (Windows only)					
Compatibility	Printer languages	Windows/Mac Host Based Printing System			PCL 5c, PCL 6 (Windows), PostScript (Windows/Mac)		
	Connectivity	Hi-Speed USB & 10/100-TX Ethernet			Hi-Speed USB, 10/100-TX Ethernet, Parallel		
	OS Compatibility	Windows 98 / ME / NT4.0 / 2000 / XP Home / XP Professional / XP Professional x64 Edition / Server 2003 / Server 2003 for x64 Edition / Vista (32-bit) / Vista (64-bit) / Mac OS 9.0 or greater / Mac OS X PowerPC 10.2 or greater / Mac OS X Intel 10.4.4 or greater *1			Windows 2000 / XP Home / XP Professional / XP Professional x64 Edition / Server 2003 / Server 2003 for x64 Edition / Vista (32-bit) / Vista (64-bit) / Mac OS X PowerPC 10.2 or greater / Mac OS X Intel 10.4.4 or greater *1		
	Advanced networking and security	N/A			IPv6, 802.1x authentication, SNMP V3, SSL3/TLS HTTPS encryption, Secure erase*2, Data Encryption*2, MAC filtering, IP filtering, Secure Print*2		
	Barcode support	N/A			Barcode with Checksum support		
Utility Suite		Template Manager 2006 (Windows only), Print Control Server (Windows only), Print Control Client, PrintSuperVision.net (Windows only), Web Print (Windows only), Color Correct, OKI LPR (Windows only), Swatch Utility, Web Driver Installer (Windows only)			Template Manager 2006 (Windows only), Print Control Server (Windows only), Print Control Client, PrintSuperVision.net (Windows only), Web Print (Windows only), Color Correct, OKI LPR (Windows only), Swatch Utility, Web Driver Installer (Windows only), Storage Device Manager*2 (Windows only), Gamma Utility, Profile Assistant*2, PDF Direct Utility (Windows only)		
Memory	Std RAM	128MB			256MB		
	Max RAM	128MB			768MB		
Paper handling	Paper capacity tray 1	300 sheets of 80gsm. Paper sizes: A3, A4, A5, B4, B5, A6					
	Paper capacity optional 2nd tray	530 sheets of 80gsm. Paper sizes: A3, A4, B4, A5, B5					
	Paper capacity of multi-purpose tray	100 sheets of 80gsm. Paper sizes: A3, A4, A5, B4, B5, A6, 10 Envelopes (Com-10, DL, C4, C5), Labels (Avery 7162, 7664, 7666), Transparencies. Supports Custom Size: Width 64-297mm Length 105-1200mm					
	Standard tray media weight	64-120gsm					
	Optional 2nd tray media weight	64-176gsm					
	Multi-purpose tray paper weight	64-200gsm					
	Duplex	Optional	Standard		Optional	Standard	
	Duplex paper sizes	Supported paper sizes: A3, A4, A5, B4, B5. Supports Custom Size: Width 148.5-297mm Length 182-420mm					
	Duplex paper weight	64-105gsm					
	Paper output	250 sheets face down, 100 sheets face up, 80gsm					
Operating conditions	Temperature/Humidity	10°C-32°C (17°C-27°C recommended) / 20% to 80% RH (50% to 70% RH recommended)					
	Storage	-10°C-43°C, 10% to 90% RH					
Power requirements	Power supply	Single phase 220-240VAC, frequency 50Hz +/-2%					
	Power consumption	Typical 550W, Peak 1300W, Standby 200W (average), Power Save < 15W			Typical 550W, Peak 1300W, Standby 200W (average), Power Save < 17W		
Noise level		Operating: Up to 54 dB(A), Standby: 37 dB(A), Power Save: Background Level					
Dimensions (HxWxD)		341 x 485 x 593mm	341 x 485 x 648mm	920 x 485 x 648mm	341 x 485 x 593mm	341 x 485 x 648mm	920 x 485 x 648mm
Weight		Approx 40kgs (including all consumables)	Approx 45kgs (including all consumables)	Approx 70kgs (including all consumables)	Approx 40kgs (including all consumables)	Approx 45kgs (including all consumables)	Approx 70kgs (including all consumables)
Duty cycle	Printer duty (max)	75,000 pages/month					
	Printer duty (average)	1,500 - 5,000 pages/month					
Warranty		Pan European 1 year on-site					

*1 Check local OKI Printing Solutions website for latest driver releases

*2 Requires Hard Disk Drive

Consumables Information: For the protection of your printer, and in order to ensure that you benefit from its full functionality, this model has been designed to operate only with genuine OKI Printing Solutions toner cartridges. These can be identified by the OKI trademark. Any other toner cartridge may not operate at all, even if it is described as "compatible", and if it does work, your printer's performance and print quality may be degraded.

Description	Life* (pages)	Order Numbers			
Black toner	6,000	43487712			
Colour toners	6,000	Cyan: 43487711	Magenta: 43487710	Yellow: 43487709	
Toner Rainbow Kit	6,000 pages per colour	43698501 (one set of Cyan, Magenta, Yellow and Black toners)			
Image drum	20,000 A4 pages @ 3 pages/job	Black: 43449016	Cyan: 43449015	Magenta: 43449014	Yellow: 43449013
Transfer belt	80,000	43449705			
Fuser unit	100,000	43529405			

* All toners: A4 pages @ 5%, Printer shipped with 2000 pages @ 5%. All Drums: A4 pages average life.

Specification subject to change without notice. All trademarks acknowledged.

OKI EUROPE LTD.
Central House, Balfour Road
Hounslow, Middlesex TW3 1HY
United Kingdom
T +44(0) 20 8219 2190
F +44(0) 20 8219 2199

WWW.OKIPRINTINGSOLUTIONS.COM

