



KONICA MINOLTA

magicolor® 2550/2550DN



Premium colour for small  
workgroup printing



REVOLUTION IN COLOUR PRINTING



KONICA MINOLTA

# magicolor® 2550/2550DN

## Premium colour for small workgroup printing

The magicolor® 2550 is a colour laser workgroup printer that offers fast and brilliant quality print outs. Thanks to its compact design, it sits quietly and conveniently in any office space. With its high versatility, the magicolor® 2550 is compatible with a wide range of office applications and network environments making it the ideal solution for business and graphic users.

### Speed, Quality and Power – the perfect combination

Size is not an attest to strength. However, the magicolor® 2550 encompasses all of the important elements you should find in a powerful workgroup printer: speed, quality and reliability. It prints at 5 pages per minute in colour and 20 pages per minute in monochrome, with a first page printout in just 13 seconds. Moreover, it is so quiet you will barely notice it.

Power is delivered by means of the renowned Emperon™ controller. The magicolor® 2550 prints from virtually any application making it a versatile printing solution for your network environment. Still more power comes in the form of a rapid 300 MHZ page-processor and standard 128 MB RAM (256 MB on magicolor® 2550DN), allowing you to speed through heavy print jobs in no time. Superb colour printing defines the magicolor® 2550.

It utilizes 600 x 600 dpi x 4-bit Photo ART™ contone technology for unrivalled print quality. Due to the variation of individual pixel colour, Photo ART™ contone accentuates printing precision, enhances image detail and provides smooth graduated colour tones. Print quality and consistency is further refined through the use of Simitri™ polymerised toners and eAIDC (enhanced Automatic Image Density Control). The result is photo quality prints in stunning colour!

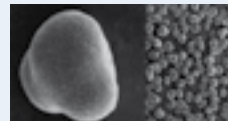
### Direct Photo Print

The magicolor® 2550DN lets you print photos direct from any PictBridge-compliant digital camera. It's fast and easy and there's no PC involved. Using index printing, it also lets you print a contact sheet first. With the facility to scale and rotate images as well, you have all the convenience of managing and editing your photos - all from your camera.

Simitri



Conventional toner



Simitri™ polymerised toner



## High paper capacity for in-house printing

Take your professional printing in-house. With the magicolor® 2550, you will have the added flexibility of printing your business documents on demand – saving you valuable time and money. Through the use of an automatic duplexer (standard on magicolor® 2550DN), you can create your own marketing materials in-house. An optional lower feeder provides you a maximum of 700 paper input capacity, which means that you will not have to interrupt important print jobs in order to load extra paper.

## Keep costs at a minimum

The magicolor® 2550 is economical to run due to its pre-installed long-lasting toner cartridges (up to 4,500 pages) and high capacity replacement toners, which results in a considerably low cost per page.

## Intuitive through smart design

The magicolor® 2550 could not be easier to use! With pre-installed toner cartridges, you can connect your magicolor® 2550 and begin using it straight away. It has an intuitive, easy-to-read LCD display and the PageScope™ administration tools enable you to oversee and manage all essential information directly from your web browser – from toner levels to configuration settings. Full frontal access to paper and consumables – only five of which need replacing – makes your printer easy to maintain.

## Available in 2 configurations:



**magicolor® 2550:**  
Basic configuration



**magicolor® 2550DN:**  
Equipped with a duplexer, 256 MB,  
and PictBridge interface

## magicolor® 2550

Fully configured



PictBridge functionality  
(magicolor® 2550DN only)



Easy-to-read LCD display



PageScope™ administration tools

## magicolor® 2550 at a glance:

- 5 ppm (colour), 20 ppm (monochrome)
- Ethernet, USB 2.0 (High-Speed) & Parallel
- PageScope™ administration tools
- 600 x 600 dpi x 4-bit Photo ART™ contone resolution
- Thick paper support up to 200 g/m<sup>2</sup> (with Mondi paper)
- 5 easy to replace consumables
- Low noise printing
- Pre-installed consumables
- Emperon™ controller
- PostScript® 3™ & PCL® XL emulations
- Windows® / Mac® / Linux® compatible
- PictBridge interface (magicolor® 2550DN only)
- Automatic duplexer (standard on magicolor® 2550DN)

The essentials of imaging



KONICA MINOLTA

# magicolor® 2550/2550DN

## TECHNICAL DATA

### Print process

Print method: Electro photographic printing system  
Print speed: Up to 5 ppm colour, up to 20 ppm monochrome  
First page out: 13 seconds monochrome, 22 seconds colour  
Warm-up time: 55 seconds or less  
Max. resolution: 600 x 600 dpi x 4-bit Photo ART™ contone; 600 x 600 dpi  
Duty cycle: 35,000 pages per month

### Hardware and software capabilities

Processor type: Freescale MPC8220i (300 MHz)  
Memory: magicolor® 2550; 128 MB (max. 640 MB), magicolor® 2550DN; 256 MB (max. 640 MB)  
Printer emulations: PostScript® 3™, PCL® XL 2.1, PCL® 5e/c/GL2, Line printer, PDF 1.3, PDF 1.4 Command Level  
Printer management: PageScope™ Net Care, PageScope™ Web Connection, PageScope™ Network Setup, PageScope™ Peer to Peer Printing Tool, PageScope™ EMS plug-in, PageScope™ Web Jet Admin plug-in, PageScope™ Plug and Print, PageScope™ NDPS Gateway, PageScope™ Direct Print, download manager, print monitor, status monitor  
Colour support: Enhanced Automatic Image Density Control (eAIDC)  
Colour simulations: SWOP, commercial press, Eurocolor, DIC, TOYO Colour rendering dictionaries, PANTONE® colour tables, ICC device profiles

### Typefaces

145 standard PostScript fonts, 89 PCL® Scalable fonts, 48 Symbol sets and 10 standard line printer fonts.

### Interface support

Ethernet (10BaseT/100BaseTX) supports TCP/IP, EtherTalk®, NetWare® IPX/SPX, NetBIOS/NetBEUI, IPP1.1, SNMP, HTTP, UDP, SMB and UPnP. Bidirectional IEEE 1284 parallel and USB 2.0 (High-Speed) 'Plug and Play' support. PictBridge (Digital Camera via Host USB)

### Operating system compatibility

Windows®: Server 2003, XP, 2000, NT 4.0, ME, 98SE  
Macintosh®: OS X 10.2 (or higher), OS 9.1 (or higher)  
Linux®: RedHat 9.0, SuSe 8.2

### Paper handling

Standard paper input: 200-sheet multi-purpose tray  
Optional paper input: 500-sheet lower paper feeder (max. 1)  
Paper output: 200-sheet (face-down)  
Optional duplexer: A4, letter, legal (Standard with magicolor® 2550DN)  
Media sizes supported: A4, B5, A5, legal, letter, Government letter/legal, statement, executive, folio, SP folio, UK Quarto, foolscap, Kai 16, 16K, 32K  
Envelope sizes supported: Envelope #10, envelope C5, envelope C6, envelope DL, envelope monarch, Envelope Youkei #4, Envelope Choukei #3, Envelope Choukei #4, J-Postcard, double postcard, photo size 4x6", photo size 10x15, custom (92-216 \* 210-356 mm)  
Printable area: 4mm from all edges  
Media type: Plain paper (60-90 g/m²), transparency, letterhead, envelope, label sheet, (\* thick paper 60 to 163 g/m², up to 200 g/m² with Mondri color copy 200 g/m², Cougar Cover 65lb), Japanese official postcard, glossy.

### Physical

Dimensions: (D) 395 mm x (W) 430 mm x (H) 341 mm  
Weight: Without consumables 15.9 kg, with consumables 19.3 kg

Dealer address

### Electrical

Power requirements (220V/240V): VAC ±10%, 50/60 ±3% Hz  
Power consumption (220V/240V): 1100 W (max.), average during printing <600W (monochrome), average during printing < 450 W (colour), < 250 W (standby)  
Energy save: < 5 W  
Energy Star compliant\*

### Environmental

Temperature requirements: 10° to 35°C (printing)  
Humidity: 15% to 85% RH (printing)  
Noise levels: <52 dBA, <35 dBA (standby)

### Regulatory/Safety conformity

UL, cUL, FCC-B, DOC, VCCI, CE Marking, C-Tick, CDRH

### Consumables¹

Printer ships with installed cyan, magenta, yellow and black toner (yield up to 4,500 pages)  
Replacements toner cartridges:  
Standard: Cyan, magenta and yellow (yield up to 1,500 pages)  
High capacity: Cyan, magenta, yellow and black (yield up to 4,500 pages)

### Warranty period and conditions

1 year on-site warranty (within EU; local law applies)

¹ The stated life expectancy of each consumable in the printer is based on printing under specific operating conditions such as page coverage for a particular page size (5% coverage of A4). The actual consumables life will vary depending on the use and other printing variables including page coverage, page size, media type, continuous or intermittent printing, ambient temperature and humidity. For more information about toner life expectancy visit <http://printer.konicaminoltaeurope.com/tco>

² The combination of certain options may cause the product to become non-compliant. Energy Star compliance does not represent an EPA endorsement of any product or service. Specifications and accessories are based on the information available at the time of printing, and are subject to change without notice. For the latest information, please visit [www.konicaminolta.com/printer](http://www.konicaminolta.com/printer)

\* Duplexer supports plain paper only

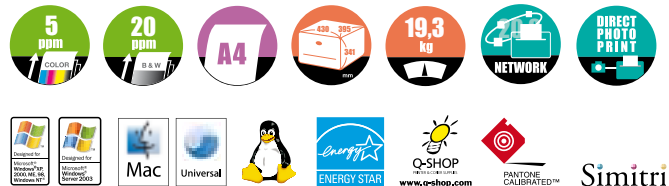
### Model specific features

Print speed:	5 ppm colour, 20 ppm monochrome
Resolution:	Up to 600 x 600 dpi x 4-bit Photo ART™ contone
Memory (RAM):	magicolor® 2550: standard 128 MB (max. 640 MB) magicolor® 2550DN: standard 256 MB (max. 640 MB)
200-sheet multi-purpose tray:	Standard
500-sheet lower feeder:	Optional
Automatic duplex:	Optional (standard on magicolor® 2550DN)
USB 2.0 (High-Speed) interface:	Standard
Ethernet (10BaseTX/100BaseT):	Standard
Hard disk kit:	Optional
PictBridge Interface:	magicolor® 2550DN only

©2006 KONICA MINOLTA All rights reserved. Specifications are subject to change without notice. The KONICA MINOLTA logo, magicolor, Emperon and Simitri are trademarks or registered trademarks of KONICA MINOLTA. All other trademarks or registered trademarks are the property of their respective owners.

Websites:  
[www.konicaminolta.eu/printer](http://www.konicaminolta.eu/printer)  
[www.q-shop.com](http://www.q-shop.com)

Part Number: 1730994-001



### Belgium and Luxemburg

Tel: (+32) 2 717 09 89 (French)  
(+32) 2 717 09 91 (Dutch)  
Fax: (+32) 2 717 09 26

### Denmark

Tel: (+45) 72 21 21 21  
Fax: (+45) 72 21 21 22

### Finland

Tel: (+358) 9 4 20 61  
Fax: (+358) 9 4 20 62 00

### France

Tel: (+33) 01 41 07 93 93  
Fax: (+33) 01 40 83 01 10

### Germany and Austria

Tel: (+49) 89 63 02 67 0  
Fax: (+49) 89 63 02 67 67

### Italy

Tel: (+39) 02 39 011 1  
Fax: (+39) 02 39 011 219

### Middle East

Tel: (+97) 1 4 335 2574  
Fax: (+97) 1 4 335 2573

### Norway

Tel: (+47) 2 27 89 800  
Fax: (+47) 2 27 89 850

### Portugal

Tel: (+351) 21 949 21 26  
Fax: (+351) 21 949 21 99

### Spain

Tel: (+34) 91 327 73 00  
Fax: (+34) 91 327 09 00

### Sweden

Tel: (+46) 8 622 51 00  
Fax: (+46) 8 622 51 24

### Switzerland

Tel: (+41) 43 322 90 20  
Fax: (+41) 43 322 90 29

### The Netherlands

Tel: (+31) 30 248 1200  
Fax: (+31) 30 248 1211

### United Kingdom

Tel: (+44) 1784 44 22 55  
Fax: (+44) 1784 46 16 41

### Ireland

Tel: (+353) 1 46 22 646  
Fax: (+353) 1 46 22 645

### For all other countries

**Konica Minolta**  
Printing Solutions  
Europe B.V.  
Tel: (+31) 30 248 1200  
Fax: (+31) 30 248 1211