



KONICA MINOLTA

magicolor® 2500W



The ultimate personal colour printer for professionals



REVOLUTION IN COLOUR PRINTING



KONICA MINOLTA

magicolor® 2500W

The ultimate personal colour printer for professionals

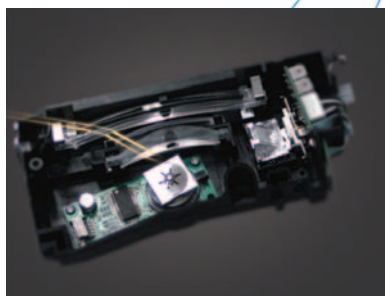
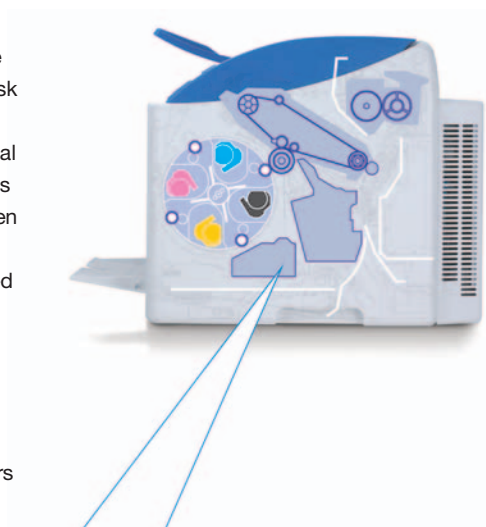
Imagine having a colour laser printer that not only offers you great speed, but fits easily on your desk and provides brilliant colour and sophistication to your business documents. Revolutionary engineering, convenience and ease of use are brought together in one compact solution: the magicolor® 2500W.

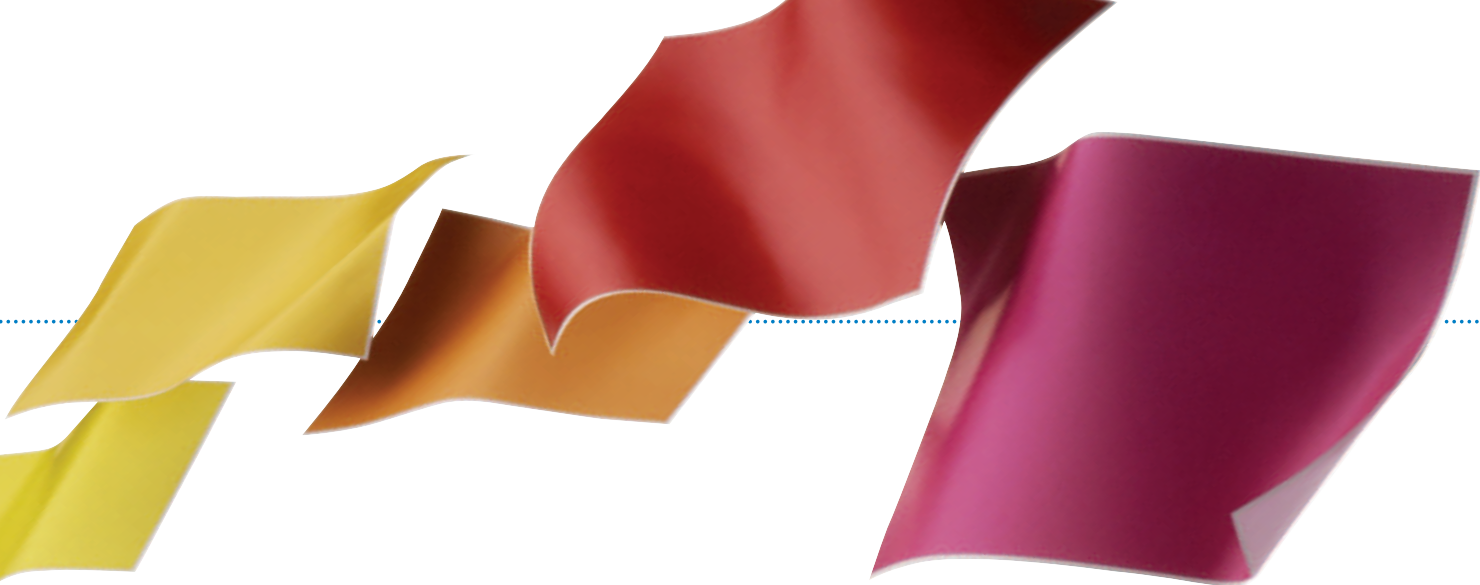
Compact through smart design

A small footprint and simplicity were key when designing the magicolor® 2500W. It is so compact, it sits easily on your desk adding convenience and privacy to your work environment. Your magicolor® 2500W could not be easier to use. Full frontal access to paper and a limited number of consumables allows for infrequent maintenance. Furthermore, a status display screen provides you an easy way to track your consumables and printer information from your PC. Consumables are pre-installed making your magicolor® 2500W print ready.

Small printhead

Due to the innovative design of the 2 beam laser printhead, the magicolor® 2500W remains one of the smallest laser printers on the market.





Print outs in seconds

Thanks to revolutionary colour engine technology and host based processing, the magicolor® 2500W sets the pace for compact laser printing. With a first page print out in just 14 seconds in monochrome and 23 seconds in colour, your prints will be delivered in an instant with continuous printing ranging from 5 pages per minute (ppm) in colour and 20 ppm in monochrome.



Professional prints in brilliant colour on demand

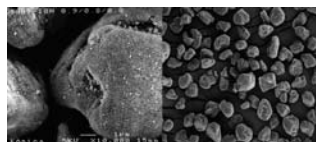
For professional home users or executives seeking privacy, the magicolor® 2500W is the perfect printing solution for you. Thanks to heavy paper support of up to 200* grams, you can create a wide variety of professional documents and marketing material in-house. From mailsots, brochures to invoices, you have the added flexibility of printing your document on-demand whilst saving considerable costs.

Due to the pioneering technology of Simitri™ polymerised toner combined with 2400 x 600 dpi resolution, the magicolor® 2500W delivers ultra sharp prints with gradients in brilliant colours!

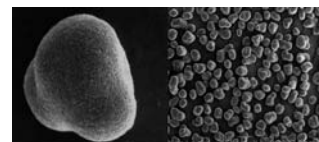
Colour and monochrome in one superior device

Why have expensive ink print outs when you can have laser sharp quality? The magicolor® 2500W offers higher productivity and lower cost of ownership than your traditional inkjet printers. It provides peace of mind in knowing that you have an efficient solution that allows you to print in colour when you need it without the cost of outsourcing.

Simitri



Conventional toner



Simitri polymerised toner

magicolor® 2500W at a glance

- 5 ppm A4 in full colour and 20 ppm in monochrome
- First page out: 14 seconds monochrome, 23 seconds colour
- 2400 x 600 dpi print quality
- 32 MB memory
- High quality Simitri™ polymerised toner
- Compatible with Windows® 98SE/2000/ME/XP/ server 2003
- USB 2.0 (High-Speed) interface
- Status display
- 200-sheet input feeder
- Manual duplexing
- 5 easy to replace consumables
- Pre-installed consumables
- Full access to printer from front



KONICA MINOLTA

magicolor® 2500W

TECHNICAL DATA

Print process

Print method: Electro photographic printing system
Print speed: Up to 5 ppm colour / up to 20 ppm monochrome
First page out: 14 seconds monochrome, 23 seconds colour
Warm-up time: 49 seconds
Resolution: 2400 x 600 dpi; 1200 x 600 dpi; 600 x 600 dpi
Duty cycle: 35,000 pages per month

Hardware and software capabilities

Processor type: Original Asic 96 MHz
Memory: 32 MB
Printer emulation: Host based
Printer management: Status display
Colour stability management: Enhanced Automatic Image Density Control (eAIDC)

Interface support

USB 2.0 (High-Speed) supporting Microsoft 'Plug and Play'

Operating system compatibility

Windows®: Server 2003, XP (Home/Pro), 2000, ME, 98SE

Paper handling

Paper input: 200-sheet multi-purpose tray
Paper output: 200-sheet (face-down)
Media sizes supported:
A4, B5, A5, legal, letter, Government letter/legal, statement, executive, folio, letter plus, UK Quarto, foolscap, Kai 16, Kai 32, 16K
Envelope sizes supported:
Envelope #10, envelope C5, envelope C6, envelope DL, envelope monarch, envelope Youkei #4, envelope Choukei #3, envelope Choukei #4, J-Postcard, double postcard, photo size 4x6, photo size 10x15, custom (90-311 * 140-200 mm)
Printable area: 4mm from all edges
Media type: Plain paper (60-90 g/m²), transparency, letterhead, envelope, label sheet, (thick paper 60 to 163 g/m², up to 200g/m² with Mondi color copy 200g/m², Cougar Cover 65lb), Japanese official postcard, glossy

Physical

Dimensions: (D) 395 mm x (W) 430 mm x (H) 341 mm
Weight: Without consumables 15.9 kg, with consumables 18.9 kg

Electrical

Power requirements (220V/240V): VAC ±10%, 50/60 ±3% Hz
Power consumption: 1100 W (max.), average during printing < 600 W (monochrome), average during printing < 450 W (colour), <250 W (standby)
Energy save: <5 W
Energy Star compliant²

Environmental

Temperature requirements: 10° to 35° C (printing)
Humidity: 15% to 85% RH (printing)
Noise levels: <53dBA (printing), 52dBA (printing with dustcover option), <35dBA (standby)

Regulatory/Safety conformity

UL, cUL, FCC-B, DOC, VCCI, CE Marking, C-Tick, CDRH

Consumables¹

Printer ships with installed cyan, magenta, yellow and black toner (yield up to 1,500 pages, black toner yield up to 4,500 pages)
Replacements toner cartridges:
Standard: Cyan, magenta and yellow (yield up to 1,500 pages)
High capacity: Cyan, magenta, yellow and black (yield up to 4,500 pages)

Warranty period and conditions

1 year PROTECT.REPAIR on-site warranty (within EU; local law applies)

¹ The stated life expectancy of each consumable in the printer is based on printing under specific operating conditions such as page coverage for a particular page size (5% coverage of A4). The actual consumables life will vary depending on the use and other printing variables including page coverage, page size, media type, continuous or intermittent printing, ambient temperature and humidity. For more information about toner life expectancy visit <http://printer.konicaminoltaeurope.com/tco>

² The addition of some options, in some combinations may cause the product to become non-compliant. Energy Star compliance does not represent an EPA endorsement of any product or service.

Specifications and accessories are based on the information available at the time of printing, and are subject to change without notice. For the latest information, please visit printer.konicaminolta.com

^{*} Thick Paper 60 to 163 g/m², up to 200g/m² with Mondi color copy 200g/m², Cougar cover 65lb

Model specific features

Print speed:	5 ppm colour, 20 ppm monochrome
Resolution:	Up to 2400 x 600 dpi
Memory (RAM):	Standard 32 MB
200-sheet multi-purpose tray:	Standard
USB 2.0 (High-Speed) interface:	Standard
Duplexing:	Manual
Dust cover:	Optional



Dealer address

©2006 KONICA MINOLTA All rights reserved. Specifications are subject to change without notice. The KONICA MINOLTA logo, magicolor, and Simitri are trademarks or registered trademarks of KONICA MINOLTA. All other trademarks or registered trademarks are the property of their respective owners.

Websites:
www.konicaminoltaprinters.co.uk
www.q-shop.com

Part Number: 1730992-001



Simitri

Belgium and Luxemburg

Tel: (+32) 2 717 09 89 (French)
(+32) 2 717 09 91 (Dutch)
Fax: (+32) 2 717 09 26

Denmark

Tel: (+45) 72 21 21 21
Fax: (+45) 72 21 21 22

Finland

Tel: (+358) 9 4 20 61
Fax: (+358) 9 4 20 62 00

France

Tel: (+33) 01 41 07 93 93
Fax: (+33) 01 40 83 01 10

Germany and Austria

Tel: (+49) 89 63 02 67 0
Fax: (+49) 89 63 02 67 67

Italy

Tel: (+39) 02 39 011 1
Fax: (+39) 02 39 011 219

Middle East

Tel: (+97) 1 4 335 2574
Fax: (+97) 1 4 335 2573

Norway

Tel: (+47) 2 27 89 800
Fax: (+47) 2 27 89 850

Portugal

Tel: (+351) 949 21 26
Fax: (+351) 219 49 21 06

Spain

Tel: (+34) 91 327 73 00
Fax: (+34) 91 327 09 00

Sweden

Tel: (+46) 8 622 51 00
Fax: (+46) 8 622 51 24

Switzerland

Tel: (+41) 43 322 90 20
Fax: (+41) 43 322 90 29

The Netherlands

Tel: (+31) 30 248 1200
Fax: (+31) 30 248 1211

United Kingdom

Tel: (+44) 1784 44 22 55
Fax: (+44) 1784 46 16 41

Ireland

Tel: (+353) 1 46 22 646
Fax: (+353) 1 46 22 645

For all other countries

Konica Minolta
Printing Solutions
Europe B.V.
Tel: (+31) 30 248 1200
Fax: (+31) 30 248 1211