



KONICA MINOLTA

The essentials of imaging



magicolor 7450II GA

The state-of-the-art graphic design printer

magicolor 7450II GA

Colour A3+ laser printer 25/25 ppm

magicolor 7450II GA



Designed for the graphic arts environment

The new magicolor 7450II GA is tailored for graphic arts environments. Vibrant, photorealistic colour quality is essential for designers, graphic artists and creative agencies. The magicolor 7450II GA combines reliability and outstanding print quality with the latest technology, enabling fast and accurate results every time. With the magicolor 7450II GA, Konica Minolta introduces a top-performance A3+ colour printer designed especially for the creative sector.



magicolor 7450II GA

■ The magicolor 7450II GA delivers fast, printing up to 25 pages per minute in A4 or 13 pages per minute in A3, in both colour and black and white. Four additional paper feeders and a duplex unit for double-sided printing bring flexibility and ensure smooth processing of even the most demanding jobs.

■ Konica Minolta's unique Emperon™ print controller and a fast 733MHz processor guarantee a powerful performance. The standard memory of 768 MB can be upgraded to 1,024 MB and the printer also benefits from a generous 40 GB standard hard disk plus a 1 GB network connection, ensuring a fast throughput of jobs. Compatible with both PC and Mac it features PCL and PostScript 3 capabilities as standard.



magicolor 7450II GA
with duplexer



magicolor 7450II GA
with duplexer and
a cabinet



magicolor 7450II GA
with duplexer, three
lower paper feeders
and a base unit

➔ Outstanding quality & advanced technology

The magicolor 7450II GA has an impressive range of the latest technologies: four dual-beam lasers ensure highest precision and stability in image writing. With PhotoART-9600™, it prints with 4-bit contone resolution, achieving an amazing 4096 colours per dot which creates considerably increased differentiation. True colour mixing is thus available, with smooth gradations and less visible raster.

The extremely fine and uniform particles of Simitri®, Konica Minolta's unique polymerised toner, ensure that high quality digital images are printed with great precision and minimum wastage, keeping the cost per page low. Text will appear crisp and sharp while colours are vibrant, offset by a deep, true black. At the same time Simitri® is much kinder to the environment than many other brands: Simitri toner consumption is lower and the printer uses less energy to fuse the toner; the toner production process is eco-friendly, and the free toner recycling programme preserves precious resources by recycling 99% of each returned cartridge.

➔ Effortless media flexibility

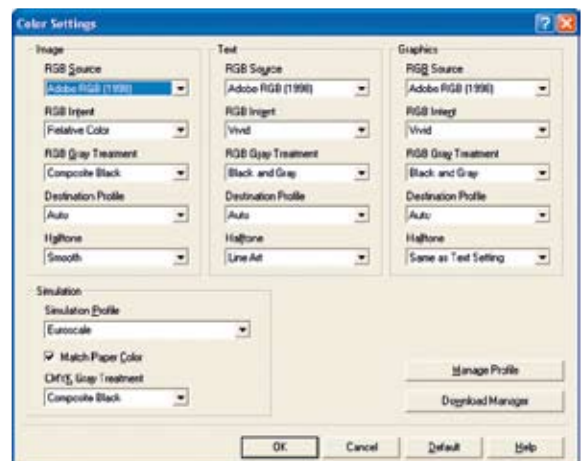
The magicolor 7450II GA offers a superior paper processing capability. Able to handle an extensive range of sizes, weights and formats makes this printer the ideal choice to produce artwork for concept books, customer presentations, samples, as well as photos, business stationery and office documents.

The magicolor 7450II GA processes formats from A6 to A3+ (311 x 457 mm) as well as custom sizes, such as banners up to 297 x 1,200 mm. With paper weights ranging from 64 to 256 gsm the magicolor 7450II GA is perfectly suited to a wide variety of creative projects. Automatic duplexing is supported in every paper weight all the way up to 256 gsm thickness. Varied media types, including thick paper, coated stock, glossy paper, labels and more, can be processed via the 250-sheet multipurpose feeder and the 100-sheet multi-manual feed tray.

The optimised media processing features include a special A3+ wide-print mode, which leaves a non-printable area of 2mm on all edges. This is especially helpful for proofing, as it provides ample room at the edge for notes and instructions.

➔ Comprehensive colour management

Graphic arts professionals will appreciate the high degree of control over colour workflow, the accurate colour reproduction and the wide range of simulations including proofing for offset production. ICM (Windows) and ColorSync (Apple) are supported, as well as ICC workflows for press simulations. In addition RGB source profiles, simulation profiles and magicolor 7450II GA-specific Pantone® colour tables are available, and custom profiles can be uploaded. Independent object-based colour setting can be used for documents containing images, graphic elements and text. The convenient Easy-Set function makes it straightforward to save job settings, including all colour adjustments, simplifying the workflow.



The eAIDC – or enhanced Automatic Image Density Control – makes calibration of the magicolor 7450II GA completely automatic and consequently it is absolutely reliable. The magicolor 7450II GA automatically adjusts toner levels when they are too high or too low. This automatic calibration of the colour density is essential for high-quality colour output that remains consistent from the first print to the last, job after job.





KONICA MINOLTA

Simitri



Technical specifications

Print process

Print method

Desktop full colour
A3 laser printer

Print speed A4

25 ppm colour
25 ppm monochrome

Print speed A3

13 ppm colour
13 ppm monochrome

First page out

11.5 seconds colour
9.5 seconds monochrome
(standard plain paper)

Warm-up time

99 seconds or less

Max. resolution

PhotoART 9600
(600 x 600 x 4 bit contone)

Duty cycle

120,000 pages per month

Hardware and software capabilities

Processor

freescale PowerPC7447A
@ 733MHz

Memory

768 MB standard, 1,024 MB max.

Hard disc (HDD)

40 GB standard

Printer language

PostScript 3 (3016), PCL 6 (XL3.0)
PCL 5e/c

Direct Print

PDF (Version 1.6), JPEG, TIFF

Printer Management

PageScope® NetCare
PageScope® Web Connection
(embedded web server)
PageScope® Network Setup
PageScope® EMS Plug-in
PageScope® Plug and Print
PageScope® NDPS Gateway
PageScope® Direct print

Colour simulations

SWOP, Commercial Press, Eurocolor,
DIC, TOYO Japan color, JMPA color,
SNAP PANTONE® colour tables, ICC
device profiles

Fonts

137 standard PostScript fonts
93 PCL scalable fonts
51 symbol sets
10 standard line printer fonts

Interface support

10-/100-/1000-Base-T Ethernet
supports TCP/IP, EtherTalk, IPX/SPX,
NetBEUI, IPP 1.1, UDP, SNMP, HTTP,
HTTPS (for PS Web Connection only)
USB 2.0 (High-Speed)
PictBridge (Digital camera via
USB host)

Operating system compatibility

Windows®

2000, 2003, XP, XP64, Vista 32/64

Macintosh®

OS X (10.2, 10.3, 10.4, 10.5)

Linux

Redhat v9.0, SuSE v8.2

Network

Network 4, 5, 6 or later

Paper handling

Standard paper input

250-sheet multipurpose feeder
100-sheet multi manual feed tray

Standard paper output

350-sheet face down output tray

Optional paper handling

500-sheet lower paper feeder
(up to 3 units)

Printable area

4 mm right/ left
4.2 mm top/bottom (A4)
2 mm from all edges (A3W)

Media sizes supported

A3, A3 Wide (311x457), A4, B5,
B5(ISO), A5, A6, B6, B4, D8K, Ledger,
Legal, Letter, G-Letter, Statement,
Executive, Folio, UK Quatro, Foolscap,
G-Legal, 4" x 6", 12" x 18", custom
(90-311 x 140-1,200mm)

Envelope sizes supported

Com10, C5, C6, DL, Monarch

Banner sizes supported

210 x 458 to 297 x 1,200 mm

Media weights supported

plain paper (64-90 gsm)
thick paper 1 (91-150 gsm)
thick paper 2 (151-209 gsm)
thick paper 3 (210-256 gsm)

Duplexing support (optional)

A5-A3 Wide

64-256 gsm

Print media supported

Plain paper, thick paper, recycled
paper, transparency, letterhead,
envelope, glossy paper, labels

Physical

Dimensions (D x W x H mm)

648 mm x 606 mm x 477 mm

Weight

51 kg without consumables

78 kg packaged to ship

Electrical

Input voltage range

220 V ~ 240 V (± 10%)

Frequency

50 ~ 60 Hz (± 3 %)

Power consumption

Max. 1,450 W or less
Average during printing 750 W or less
Standby 130 W or less
Energy saving 28 W or less

Environmental

Temperature

10 ~ 35°C

Humidity

15% to 85%

Noise levels

52 dB or less (A) (printing),
40 dB or less (A) (standby)

Regulatory/Safety conformity

Doc, CE Marking, GS, EMC, WEEE,
EcoMark

Consumables

Pre-installed

Toner
CYMK – yield up to 3,000 pages

Imaging Unit

CYM – yield up to 30,000 pages
K – yield up to 50,000 pages

Replacements

Toner
CYM – yield up to 12,000 pages
K – yield up to 15,000 pages

Imaging Unit

CYM – yield up to 30,000 pages
K – yield up to 50,000 pages

Waste toner bottle

yield up to 18,000 pages

Maintenance parts

Transfer roller and Ozone filter

Yield up to 120,000 pages

Transfer belt

Yield up to 120,000 pages

Fuser unit

Yield up to 120,000 pages

Pick roller

Yield up to 200,000 pages

Warranty period and conditions

1 year on-site warranty

(within EU; local law applies)

- All specifications relating to paper capacity refer to A4-size paper of 80 gsm quality.
- All specifications relating to printing speeds refer to A4-size paper that is printed crosswise in multipage, simplex mode.
- The support and availability of the listed specifications and functionalities varies depending on operating systems, applications, network protocols as well as network and system configurations.
- The stated life expectancy of each consumable is based on specific operating conditions such as page coverage for a particular page size (5 % coverage of A4). The actual consumables life will vary depending on the use and other printing variables including page coverage, page size, media type, continuous or intermittent printing, ambient temperature and humidity.
- Some of the product illustrations contain optional accessories.
- Specifications and accessories are based on the information available at the time of printing, and are subject to change without notice.
Konica Minolta does not warrant that any prices or specifications mentioned will be error-free.
- Microsoft, Windows and the Windows logo are trademarks, or registered trademarks, of Microsoft Corporation in the United States and/or other countries.

© 2008 KONICA MINOLTA. All rights reserved. Specifications are subject to change without notice. The KONICA MINOLTA logo, magicolor, Emperon, Simitri HD and PhotoART-9600 are trademarks of KONICA MINOLTA. All other brand and product names may be registered trademarks or trademarks of their respective holders and are hereby acknowledged.

For further information please visit www.konicaminolta.co.uk/printer

Your Konica Minolta Business Solutions Partner:



Konica Minolta
Business Solutions (UK) Ltd
Old Bridge House • The Hythe
Staines • Middlesex TW18 3JQ
Tel: +44 (0)1784 44 22 55
Fax: +44 (0)1784 46 16 41
www.konicaminolta.co.uk/printer