



KONICA MINOLTA

magicolor® 5500 series



Optimised uptime and complete cost control



REVOLUTION IN COLOUR PRINTING



KONICA MINOLTA

magicolor® 5500 series

Optimised uptime and complete cost control

From medium sized workgroups to the enterprise, the magicolor® 5500 series is perfectly designed to meet the needs of even the most demanding office environments. Its advanced printing technology offers unsurpassed print quality and efficiency to vastly optimise printer uptime and total cost of ownership. Available in two models, the magicolor® 5500 series, provides the enterprise with ultimate performance, quality and versatility.

magicolor® 5550 – bringing high performance and versatility to the professional user

The magicolor® 5550 is the colour laser office printing solution where high speed and outstanding print quality are key. With print outs at 25.6 ppm in colour, 30 ppm in monochrome and a first page out in an astounding 8 seconds, it fits perfectly into demanding office workgroups. True power comes in the form of the latest version of the Emperon™ Controller boasting PCL® 6 and PostScript® 3™ emulations and a PowerPC® 733 MHz processor, which makes it easy to zip through large print runs.

magicolor® 5570 – the printing powerhouse for the enterprise

The magicolor® 5570 is synonymous with robust printing where high quality and fast output is essential. It delivers print outs at 30 ppm in colour and 35 ppm in monochrome. Suitable for any workgroup, design or other heavy duty environments, the magicolor® 5570 provides print outs in photographic like detail. Through the power of the latest version of the Emperon™ Controller, it offers PCL® 6 and PostScript® 3™ emulations and a PowerPC® 867 MHz processor which enables it to handle heavy workloads with ease.

Flexible paper options for in-house printing

The magicolor® 5500 series comes standard with a 500-sheet lower feeder and 100-sheet multi-purpose tray capacity with the option to add up to two additional 500-sheet feeders. An optional duplexing unit enables two-sided and booklet printing. The series also has the option of including a 2-bin staple finisher, which provides the convenient feature of stapling (at a 45° angle) and sorting your documents just like a copier! Also, it supports a wide range of media types enabling you to print commercial materials in-house on up to 210 g/m² paper – from direct mail pieces, business cards to banners (up to 1200 mm).



Simitri™ HD - print quality and durability that rivals offset printing

The magicolor® 5500 series utilises the revolutionary technology of Simitri™ HD, the next-generation, high definition polymerised toner to deliver unsurpassed print quality and durability. Printing at PhotoART-9600™ (600 x 600 x 4-bit contone) varies the colours of individual pixels to a much greater degree than usual, providing outstanding printing precision, enhanced picture detail and smooth colour gradations. Commercial material will last longer due to its increased resistance to withstand UV light and peeling that can occur when documents are folded.

Gain full control of business printing costs

Due to its pioneering toner saving mode and 3-object segmentation technology, the magicolor® 5500 series can differentiate between text, graphics and images, giving it the unique ability to automatically maximise toner efficiency. As a result, its toner saving mode allows customers to save up to 50% toner without notably compromising print quality. Furthermore, Simitri™ HD operates at a lower temperature, which significantly reduces paper jams and ultimately maximises uptime.

Ultimate compatibility through the power of Emperon™

Konica Minolta's latest generation of Emperon™ provides supreme compatibility with major printing languages (PostScript®3™, PCL® 6), operating systems and business applications (SAP®, Citrix Metaframe®). Additionally, the magicolor® 5500 series lets you print photos directly from any PictBridge-compliant digital camera or USB memory stick (supports the file formats TIFF, PDF and JPEG) without requiring a PC.¹ The result being quick document processing from virtually any office, design, publishing and other applications.



User-friendly for effortless operation

With consumables and network card already installed, you are ready to start using the magicolor® 5500 series as soon as you take it out of the box. It has an easy-to-read back-lit graphic display, and paper and toner levels can be monitored from a PC through PageScope® Suite administration tools. Drum and toner cartridges are separated in order to optimise each consumable's life.

Secure printing

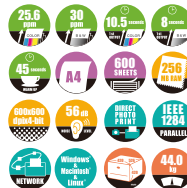
Emperon™ technology, makes it possible to ensure that confidential documents remain for your eyes only. When an alpha-numeric password is set prior to initiating a print job, output will be delayed until the user types in their personal code¹. Additional features such as job accounting, downloading fonts, staple finisher and overlays can be used after installing a hard disk drive or a CompactFlash™ card.

¹ A hard disk drive or CompactFlash™ card is required.



magicolor® 5500 series

magicolor® 5550



magicolor® 5570



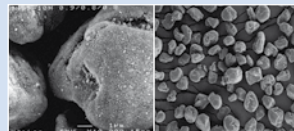
Direct USB Print



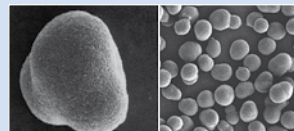
Simitri HD
High Definition Polymerized Toner

A new generation in print quality and durability

- Brilliant print quality in the tiniest detail
- Greater durability ensuring long lasting prints
- Less energy consumption
- Reduces paper jams
- Overprint on pre-printed documents
- Flexible media handling
- Cuts maintenance and repair
- Utilises an environmentally friendly manufacturing process



Simitri™ polymerised toner



Simitri™ HD

The essentials of imaging



KONICA MINOLTA

magicolor® 5500 series

TECHNICAL DATA

Print process

Print method: Desktop tandem full colour A4 laser beam printer
Print speed A4: Up to 25.6 ppm colour, up to 30 ppm monochrome (magicolor® 5550)
Up to 30 ppm colour, up to 35 ppm monochrome (magicolor® 5570)
First page out: 10.5 seconds colour, 8 seconds monochrome (magicolor® 5550)
9 seconds colour, 7 seconds monochrome (magicolor® 5570)
Warm-up time: 45 seconds or less
Max. resolution: PhotoART-9600™ (600 x 600 dpi x 4-bit contone)
Duty cycle: 120,000 pages per month

Hardware and software capabilities

Processor type: Freescale PowerPC® 7448, 733 MHz (magicolor® 5550), 867 MHz (magicolor® 5570)
Memory: 256 MB (max. 1024 MB)
Printer emulations: PostScript® 3™, PCL® 6 (XL 3.0), PCL® 5e/c
Direct print: PDF (version 1.5), JPEG, TIFF (HDD or CompactFlash card required)
CF card slot: standard (up to 1GB)
Printer management: PageScope® NetCare, PageScope® Web Connection, PageScope® Network Setup, PageScope® Peer to Peer Printing Tool, PageScope® EMS plug-in, PageScope® Web Jet Admin plug-in, PageScope® Plug and Print, PageScope® NDPS Gateway, PageScope® Direct Print, PageScope® Visual Count Server, download manager, print monitor, status monitor
Colour simulations: SWOP, commercial press, Eurocolor, DIC, TOYO, PANTONE® colour tables, ICC device profiles
Registration: Citrix Metaframe®, SAP®

Typefaces

137 standard PostScript® fonts, 93 PCL® scalable fonts, 51 symbol sets and 10 standard line printer fonts.

Interface support

Ethernet 10Base-T / 100Base-TX / 1000Base-T (supports TCP/IP, EtherTalk®, IPX/SPX, NetBEUI, UDP, NetBIOS, IPP1.1, SNMP, HTTP, HTTPS). Bidirectional IEEE 1284 parallel, USB 2.0 (High-Speed). Host USB (PictBridge 1.0 & USB drive printing)

Operating system compatibility

Windows®: 2003 Server for 64 bit, Server 2003, XP for 64bit, XP , 2000, NT 4.0, ME, 98SE
Macintosh®: OS X (10.2, 10.3, 10.4), OS 9.1 (or later)
Linux®: RedHat 9.0, SuSe 8.2
Netware®: 4/5/6 or later

Paper handling

Standard paper input: 500-sheet cassette + 100-sheet multi-purpose tray
Optional paper handling: 500-sheet cassette (max. 2)
Automatic duplexer*
Large capacity 2-bin finisher (HDD required)
Paper output: 250-sheet (face-down)
Media sizes supported (from MPT): A4, B5, B5 (ISO), A5, A6, B6, photo (100 * 150 mm), legal, letter, G-Letter, statement, executive, folio, SP folio, UK Quarto, foolscap, G-Legal, 16K, Kai16, Kai32, Japanese postcard, double postcard, Custom (92-216 * 148-1200 mm)
Envelope sizes supported:
Com10, C5, C6, DL, monarch, Japanese postcard, double postcard
Duplexer*: A4, A5, B5, executive, G-Letter, letter, folio, G-Legal, legal
Printable area: 4 mm from all edges
Media type: plain paper (60-90 g/m²), recycled paper (60-90 g/m²), transparency, envelope, letterhead, labels, thick paper 1 (91-150 g/m²), thick paper 2 (151 -210 g/m²), postcard, glossy media 1, glossy media 2

Physical

Dimensions: (D) 526 mm x (W) 420 mm x (H) 420 mm
Weight: 33.4 kg (engine without consumables), 44 kg (packaged to ship)

Electrical

Input voltage range: 220V~240V (±10%)
Frequency: 50~60 Hz (±3 Hz)
Power consumption: 1450W (max.), average during printing 750W or less, <250 W (standby)
Energy save: <20W
Compliance: Energy Star²

Environmental

Temperature requirements:
10°~35°C (operating), 0°~35°C (non-operating)
Humidity: 15% to 85% RH (operating), 10% to 85% RH (non-operating)
Noise levels: <56dB (A) (printing), <39dB (A) (standby)

Regulatory/Safety conformity

UL, cUL, FCC-B, VCCI, CE Marking, C-Tick, CDRH, Nordic Swan, Eco Mark, Lead free (AA rank), RoHS

Consumables¹

Pre-installed: Cyan, magenta, yellow and black toner (yield up to 3,000 pages)
Cyan, magenta, yellow and black print unit (yield up to 30,000 pages)
Waste toner bottle: (yield up to 36,000 pages monochrome, 9,000 pages colour)
Replacements toner cartridges:
Toner bottle: yield up to 6,000 pages (standard), 12,000 pages (high-capacity)
Print unit: yield up to 30,000 pages
Waste toner bottle: yield up to 36,000 pages (monochrome), 9,000 pages (colour)

Warranty period and conditions

1 year on-site warranty (within EU; local law applies).

¹ The stated life expectancy of each consumable in the printer is based on printing under specific operating conditions such as page coverage for a particular page size (5% coverage of A4). The actual consumables life will vary depending on the use and other printing variables including page coverage, page size, media type, continuous or intermittent printing, ambient temperature and humidity. For more information about toner life expectancy visit <http://printer.konicaminoltaeurope.com/tco>

² The addition of some options, in some combinations may cause the product to become non-compliant. Establishment of new regulations may cause the product to become non-compliant. Energy Star compliance does not represent an EPA endorsement of any product or service.

Specifications and accessories are based on the information available at the time of printing, and are subject to change without notice. For the latest information, please visit www.konicaminoltaprinters.co.uk

* Duplexer supports plain paper only

Model specific features

Print speed:	magicolor® 5550: 25.6 ppm (colour), 30 ppm (monochrome) magicolor® 5570: 30 ppm (colour), 35 ppm (monochrome)
Resolution:	PhotoART-9600™ (600 x 600 dpi x 4-bit contone)
Memory (RAM):	Standard 256 MB (max. 1024 MB)
100-sheet multi-purpose tray:	Standard
500-sheet cassette:	Standard
500-sheet cassette:	Optional (max. 2)
Automatic duplex:	Optional
High-capacity 2-bin finisher:	Optional
USB 2.0 (High-Speed) interface:	Standard
Gigabit Ethernet:	Standard
Wireless LAN:	3rd party solution
Host USB:	Standard
CF card slot:	Standard
Cabinet:	Optional
Hard disk kit:	Optional

©2007 KONICA MINOLTA All rights reserved. Specifications are subject to change without notice. The KONICA MINOLTA logo, magicolor, Emperon, and Simitri HD, PhotoART-9600 are trademarks or registered trademarks of KONICA MINOLTA. All other trademarks or registered trademarks are the property of their respective owners.

Websites:
www.konicaminolta.eu/printer
www.q-shop.com

Part Number: 1731005-002

Dealer address



Belgium and Luxemburg
Tel: (+32) 2 717 09 89 (French)
(+32) 2 717 09 91 (Dutch)
Fax: (+32) 2 717 09 26

France
Tel: (+33) 01 41 07 93 93
Fax: (+33) 01 40 83 01 10

Middle East
Tel: (+97) 1 4 335 2574
Fax: (+97) 1 4 335 2573

Denmark
Tel: (+45) 72 21 21 21
Fax: (+45) 72 21 21 22

Germany and Austria
Tel: (+49) 89 63 02 67 0
Fax: (+49) 89 63 02 67 67

Norway
Tel: (+47) 2 27 89 800
Fax: (+47) 2 27 89 850

Finland
Tel: (+358) 9 4 20 61
Fax: (+358) 9 4 20 62 00

Italy
Tel: (+39) 02 39 011 1
Fax: (+39) 02 39 011 219

Portugal
Tel: (+351) 219 49 21 26
Fax: (+351) 219 49 21 99

Spain
Tel: (+34) 90 222 32 27
Fax: (+34) 91 327 09 00

The Netherlands
Tel: (+31) 30 248 1200
Fax: (+31) 30 248 1211

For all other countries
Konica Minolta
Printing Solutions Europe B.V.
Tel: (+31) 30 248 1200
Fax: (+31) 30 248 1211

Sweden
Tel: (+46) 8 622 51 00
Fax: (+46) 8 622 51 24

United Kingdom
Tel: (+44) 1784 442255
Fax: (+44) 1784 461641

Switzerland
Tel: (+41) 43 322 90 20
Fax: (+41) 43 322 90 29

Ireland
Tel: (+353) 1 46 22 646
Fax: (+353) 1 46 22 645