

FS-9120DN & FS-9520DN

discover


▶ advanced functionality that
outperforms your expectations



▶ print ▶ copy ▶ scan ▶ fax

Ecosys[®]

 **KYOCERA**



discover

► **The FS-9120DN and FS-9520DN:
going beyond your expectations in A3 monochrome excellence**

Kyocera Mita introduces two leaders of paper-handling proficiency for the busy department. The two flagship A3 printers fulfil your demands for efficient, professional document production. Start with their impressive standard features: automatic duplex, multipurpose tray/feeder, high-speed network connectivity. Add to that the enormous range of paper feeding and document finishing options. The result: a high-speed, cost-effective solution that is tailor-made to the needs of your department. Whether you're looking for the flexibility to produce impressive booklets, or the efficiency to produce high volumes at minimum cost: the FS-9120DN and FS-9520DN deliver the independence you need.

The **FS-9120DN** gives your department the efficient support you need. With its fast engine (36ppm A4 and 20ppm A3), powerful 400 MHz CPU, outstanding paper feeder and finishing options - including booklet production - it's got the flexibility to fulfil your department's demands.

The **FS-9520DN** is perfect for high-volume production. Delivering 51ppm A4 (26ppm A3) and with its powerful 500 MHz CPU with 64 MB of RAM, the FS-9520DN is ready to meet your high-volume needs. Super-fast output combines with impressive finishing options to give you the freedom to create your optimal solution.

▶ Standard equipment that makes life easier from the start

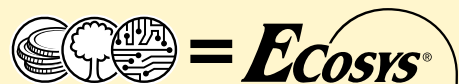
Powerful features usually mean hefty additional costs. Not with the FS-9120DN or the high-volume FS-9520DN. Both models offer an astounding array of high-performance features as standard.



- **Standard network interface:** Both models offer network functionality as standard. Straight out of the box, they are ready to connect with your network, delivering the connectivity you want.
- **Standard automatic duplex:** Save on paper consumption and archiving space with efficient automatic double-sided printing. This cost-saving feature is standard for both the FS-9120DN and the FS-9520DN.
- **Standard 2 x 500-sheet universal paper cassettes:** These paper cassettes provide a base functionality that will serve most departmental needs. As these two cassettes come in combination with the 200-sheet multifunctional paper cassette, you have the free choice between three paper feeding trays. Formats up to A3 are handled with ease.
- **Standard 200-sheet multipurpose feeder:** The side-input multipurpose feeder gives you the convenience and flexibility to use paper formats from A6 to A3 on a broad range of special weight stock (60 - 200gsm). The closed cassette saves space and protects your quality stock from environmental effects.



▶ Independent thinking for the challenges of business:



ECOSYS is Kyocera Mita's answer to the demand for efficient and cost-effective print technology. By eliminating waste and maximising component efficiency, ECOSYS printers consume less and produce more.



ECOnomy: Both these flagship printers offer the lowest cost per page in their class, thanks to Kyocera Mita's proven ECOSYS technology. Long-life ceramic components ensure that costs for consumables are kept to an absolute minimum.



ECOlogy: Conventional printers compel you to throw away the entire drum, developer and roller assembly every time the toner runs out. This results in large amounts of non-recyclable waste: an ecological nightmare. The FS-9120DN and FS-9520DN use ECOSYS components that are made to last, not to be discarded in the rubbish.



SYStem printing: Each powerful model delivers outstanding network connectivity and effortless system administration. Kyocera Mita drivers are based on a single platform technology: effortless connectivity is assured.

▶ Input solutions tailored to the needs of your department

FROM FLEXIBLE DEPARTMENTAL PRINTER TO HIGH-VOLUME PRINTER

The FS-9120DN and FS-9520DN offer a range of high-performance paper feeder options that is second to none. Simply configure the system to suit your needs. Choose the flexibility of multiple-source input drawers. Or tackle high-volume print jobs with the high-capacity paper feeder.

CHOOSE FLEXIBILITY WITH THE PF-70

You want speedy and efficient print output for your department? But you still want a choice of paper stocks and document types? No problem. The FS-9120DN and FS-9520DN let you use up to five different paper sources all up to A3 format. That means you can produce impressive documents with heavy-stock A3 cover pages, colour A4 inserts, even transparencies – without the need to reload your cassettes.

CHOOSE HIGH VOLUME WITH THE PF-75

With their best-in-class cost effectiveness, the FS-9120DN and FS-9520DN are ideal for high volume printing. When you need a reliable monochrome A3 printer that will tackle big jobs with less down-time, the high-capacity paper feeder, PF-75, is the perfect solution. With a maximum capacity of 4,200 sheets, both printers will deliver non-stop output with a minimum of user intervention.

Standard Configuration	CB-70	PF-70	PF-75
Both models offer two 500-sheet universal paper cassettes and a 200-sheet multipurpose feeder as standard. Standard 1,200-sheet capacity means less down-time for paper loading.	The paper cabinet with rollers (CB-70) offer even more convenience. Protect your paper stock and keep materials organised.	Select the 2 x 500-sheet paper feeder (PF-70) and get access to up to five paper sources. Create impressive documents on a range of different media types without the need to reload cassettes.	Add the optional 3,000-sheet A4 paper feeder (PF-75). Spend more time printing and less time refilling the print drawers during high-volume print runs.

Base version → Extended base functionality → Flexibility → High-volume

RECOMMENDED

FS-9120DN

Flexibility for your department

- Automatic duplex and network functionality as standard
- 36ppm A4, 20ppm A3
- 1,200 sheets as standard paper capacity
- 8 emulations incl. PS 3 and PDF direct printing
- Only 25 seconds warm-up time from power on
- Lowest cost per page in its class
- 400MHz CPU with 32MB RAM

Base version with cabinet:



Entry-level finishing solution:



DF-73 requires AK-71P

► Professional finishing

ECONOMICAL OUTPUT AND IMPRESSIVE FUNCTIONALITY COMBINED


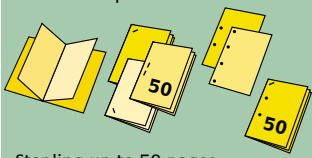
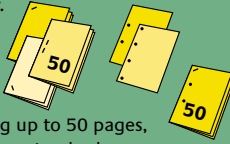

Outstanding documents need outstanding finisher solutions. That's where the FS-9120DN and FS-9520DN truly excel. From complex, multi-stock booklets to high-volume output, these printers are ready to deliver what you need. Select from an excellent range of finishers to suit your needs.

PROFESSIONAL BOOKLET PRODUCTION WITH THE DF-75

Create high-impact booklets with remarkable ease. Your booklets are collated, folded and stacked – entirely automatically. Alternatively, you can off-set and staple documents, and hole-punch (optional) too.

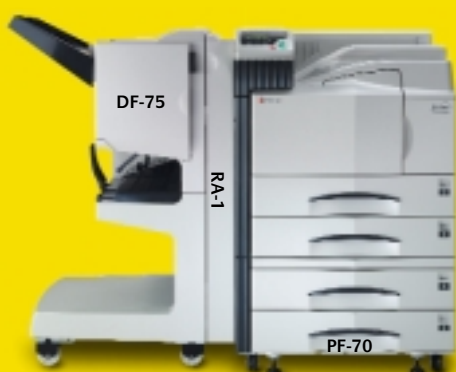
CONVENIENT MAILBOX TRAYS WITH THE M-2107 FOR THE DF-71

Forget searching for your documents among the stack in the output tray. Simply add the seven-bin mailbox sorter (M-2107) to the DF-71 finisher to make the FS-9120DN and FS-9520DN the perfect departmental print resource. Print jobs are sent into the individual trays, ensuring that nothing gets lost or misplaced.

DF-73	DF-75	DF-71	M-2107 Mailbox for DF-71
<p>Add the 1,000-sheet document finisher to share fast A3-capable printing and finishing capabilities with your whole department.</p>  <p>Stapling up to 30 pages</p>	<p>Professional booklet finisher with 1,000 sheet output capacity plus stacker for up to 20 booklets.</p>  <p>Stapling up to 50 pages, punching optional</p>	<p>High-capacity finisher for mass production: Even the biggest jobs are handled with ease, using the powerful 3,000-sheet high-capacity finisher.</p>  <p>Stapling up to 50 pages, punching standard</p>	<p>Separate output from different users quickly and easily with the mailbox sorter.</p> 
Entry version	Flexibility	High-volume	Department

CONFIGURATIONS

Booklet finishing solution:



DF-75 requires AK-71P

Department finishing solution:



DF-71 requires AK-71P

FS-9520DN

High volume production expertise

- Automatic duplex and network functionality as standard
- 51ppm A4, 26ppm A3
- 1,200 sheets as standard paper capacity
- 8 emulations incl. PS 3 and PDF direct printing
- Only 25 seconds warm-up time from power on
- Lowest cost per page in its class
- 500MHz CPU with 64MB RAM

▶ The intelligent controller for effortless network management

OUTSTANDING CONNECTIVITY

USB 2.0 (High Speed), parallel port and a Fast Ethernet interface as standard. For even greater connectivity a wide range of powerful internal and external network interface options are offered. Choose the TokenRing interface (SB-60) to fit perfectly into your IBM environment. Choose a fibre Optic interface (SB-110FX) for high data security, or select the cable-free convenience of a wireless LAN interface (SB-70).

KM-NETVIEWER

Configure, monitor and manage your FS-9120DN and FS-9520DN and any other SNMP-compatible device on your network. Set up your printer with the easy-to-use graphical user interface. KM-NetViewer for Client is the appropriate tool for (advanced) users, while KM-NetViewer offers full functionality to the administrator.

▶ A comprehensive set of emulations to suit the entire department

To enable best use of the powerful print engine, the FS-9120DN and FS-9520DN are equipped with very powerful print controllers:

- The **PCL 6 emulation** is the best base for all kinds of standard office applications.
- **KPDL 3**, the PostScript 3 emulation, is perfect for Apple and Linux/Unix users.
- In **PS 3 emulation**, DTP applications benefit most from the 136 scalable PS fonts.
- A further innovation offered as standard by both the FS-9120DN and FS-9520DN is **PDF direct printing**. You save time and reduce the pressure on your network. Instead of opening PDFs with Acrobat Reader and converting it to a larger print file with the printer driver, you simply send the compact PDF file.
- Speedy and cost effective output of A3 plots, created and downsized with the plotter emulation **HP 7550A (KC-GL)**, makes it the ideal partner for your plotters.

▶ Get more than you expect with PRESCRIBE IIe

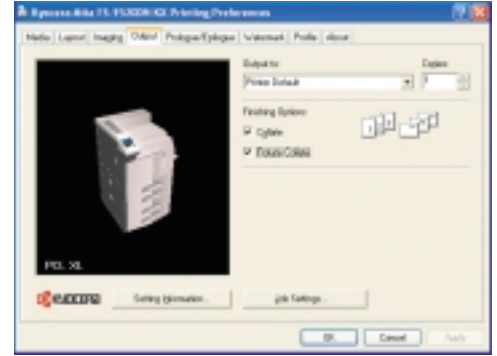
In a busy department, it's important to know that you can work efficiently with your company's forms without the stress of loading and unloading paper cassettes with pre-printed stationery. Thanks to PRESCRIBE IIe, hundreds of electronic forms can be stored inside the printer on a Compact Flash or hard disk. All printers are simultaneously updated via the network. For handling electronic forms, logos, signatures etc, PRESCRIBE IIe is the ideal tool.

- Easy support of 45 different barcode types plus the two-dimensional barcode PDF 417
- Configuration files, containing all relevant settings via PRESCRIBE IIe commands, allow easy setting of the printer via the network.



► KX Printer driver technology

All Kyocera Mita devices run on a universal platform. That means one familiar user interface is offered to all Windows systems and for all Kyocera printers as well as KM digital multifunctional systems. This makes life much easier when the print device or the operating system is changed.



With the electronic sorting feature the document is sent only once to the printer, but is printed several times. This reduces network traffic as well as the calculation time of the printer driver and print controller itself. Rotated output (A4, A4R) separates printed sets without a finisher.

► Powerful document management

The optional enhanced Multiple Printing System (eMPS) brings a new level of convenience, efficiency and security to your office printing. Entire documents can be stored on the integrated hard disk drive (optional HD-4ME). The sophisticated eMPS technology offers:

- **Proof and Hold** enables the first print to be checked for errors before the entire job is printed. Expensive misprints and the associated waste of toner and paper are effectively prevented.
- **Quick Copy** delivers extra speed and convenience in a busy office. The data of recently printed documents remains on the printer temporarily. Documents can be re-printed directly, without the need to be sent over the network again, minimising network traffic.
- **Job Storage** saves data for commonly used documents permanently on the hard disk. Documents can be printed directly from the printer's hard disk, ensuring consistent document layout and again reducing network traffic.
- **Private Print** provides added security for confidential documents. Private Print jobs are only released for printing after you enter your personal password via the printer operation panel. After printing the data is immediately deleted from the hard disk.
- **Virtual Mailbox** offers each member of your team a convenient, personalised storage space on the hard disk itself, where document data can be stored and called up as needed.



over

FS-9120DN FS-9520DN

ECOSYS technology is based on extremely durable components. The drum, developer and fuser of the FS-9120DN and FS-9520DN are designed for 500,000 pages. Due to the fact that toner is the only consumable required, Kyocera printers operate with the lowest cost per page in their class, and they are particularly environmentally friendly. Thanks to their flexibility and extensive options, all ECOSYS printers can be modified to meet your exact requirements.

System platform

The FS-9120DN and FS-9520DN delivers outstanding network connectivity and problem-free system administration. Kyocera's single platform technology means that the same driver can be used for every Kyocera print device on the network: from single-user desktop printers to high-end

GENERAL

Technology: Kyocera Mita ECOSYS Laser

Engine speed:

FS-9120DN: Up to 36 ppm A4 up to 20 ppm A3

FS-9520DN: Up to 51 ppm A4 up to 26 ppm A3

Resolution: 1,200 dpi quality (1,800 x 600 dpi)

Time to first page:

FS-9120DN: 7 seconds

FS-9520DN: 5 seconds

Warm-up time: 25 seconds from power on

Maximum Duty cycle:

FS-9120DN: 180,000 pages in a month

FS-9520DN: 300,000 pages in a month

Power source: AC 220/240 V 50/60 Hz

Power consumption:

FS-9120DN: Printing: 920 W, Stand-By: 160 W,

Power-Saving/ECOpower: 12 W

FS-9520DN: Printing: 940 W, Stand-By: 160 W,

Power-Saving/ECOpower: 12 W

Noise (ISO 7779):

FS-9120DN: Printing: 53 dB-A, Stand-By: 39 dB-A,

Power-Saving/ECOpower unmeasurable low

FS-9520DN: Printing: 54 dB-A, Stand-By: 39 dB-A,

Power-Saving/ECOpower unmeasurable low

Dimensions (W x D x H): 585 x 639 x 615 mm

Weight: approximately 67 kg

Certification: TÜV/GS, CE, PIS

This product is produced according to the quality norm

ISO 9001 and the environmental guidelines ISO 14001

PAPER HANDLING

All mentioned paper capacities are based on a paper thickness of max. 0.11 mm. Please use paper recommended by Kyocera Mita under normal environmental condition.

Input capacity: Universal paper cassette: 2 x 500 sheets, 60 - 105 g/m², A4, B5, A5, Letter, Legal, Custom (148 x 210 mm to 216 x 297 mm)

Multi purpose cassette: 200 sheets, 60 - 200 g/m², A4, B5,

A5, Letter, Custom (70 x 148 mm to 216 x 297 mm)

Max. paper input capacity with options: 4,200 sheets

Output capacity: 500 sheets face down

multifunctional systems. Only Kyocera Mita offers this effortless combination of IT sophistication and high performance paper handling expertise. Duplex and network functionality is standard with the FS-9120DN and FS-9520DN.

PRESCRIBE IIe

With the Kyocera Mita page design and control language PRESCRIBE IIe, even complex graphics, logos and forms (even multipart forms) can be created independently of the system and saved and updated in the printer. Consequently, integration into print files no longer applies. They are only accessed as required and therefore relieve the load on the network.

Typefaces and barcodes

The 136 scalable high quality PostScript fonts provide high flexibility for all applications. A total of 45 integrated barcodes including hash totals are computed automatically by the printer and printed in the desired size, alignment and position.

CONTROLLER

Processor:

FS-9120DN: Power PC 750Cxe/400 MHz

FS-9520DN: Power PC 750Cxe/500 MHz

Memory:

FS-9120DN: Standard 32 MB + ECOMemory,

Maximum 544 MB in 2 DIMM slots

FS-9520DN: Standard 64 MB + ECOMemory,

Maximum 576 MB in 2 DIMM slots

Emulations: PCL 6/PCL 5e incl. P/L, KPDL 3 (PostScript 3

compatible), PDF direct print, with Automatic Emulation

Sensing (AES), KC-GL (HP-7550A), Line Printer, IBM Proprinter

X24E, Epson LQ-850, Diablo 630

Controller language: PRESCRIBE IIe

Fonts: 80 outline fonts (PCL), 136 PostScript Fonts,

1 bitmap font, 45 types of one-dimensional barcodes, plus

two-dimensional barcode PDF-417

Downloadable fonts: Kyocera Mita, PCL + TrueType format,

Type 1 + 3 format

Print features: eMPS - job management functionality

with optional hard disk HD-4ME for quick copy, proof and

hold, private print and job storage

INTERFACE

Standard interface: Fast Ethernet 10/100 Base TX,

High speed bi-directional parallel (IEEE 1284), USB 2.0

(High Speed), KUJO LV Option-Interface slot

Multiple Interface Connection (MIC): MIC allows for

simultaneous data transfer via up to four interfaces, with

each interface having its own virtual printer.

OPTIONS

Paper handling

PF-70 Paper feeder: 2 x 500-sheet, 60-105 g/m², A3, A4, A4-R, A5, B4, B5, B5-R, Letter, Letter-R, Legal, Ledger, Folio, STMT

PF-75 Paper feeder: up to 3,000-sheet, 60-105g/m², A4, B5, Letter

DF-71 Document finisher: 250 sheet face-up, up to 3,000-sheet A4 or 1,500 sheet A3 Face-down, up to 50 sheet A4 or 30 sheet A3 stapling at 3 positions, 2 or 4 hole punch. Requires AK-71P

M-2107 Mailbox: 7bin x 100 sheet mailbox, A5R-A3, for DF-71

DF-73 Document finisher: up to 1,000 sheet, one position

stapling up to 30 sheets. Requires AK-71P

DF-75 Document finisher: up to 1,000-sheet A4 or 500

sheet A3, staple up to 50 sheet A4 or 30 sheet A3, stapling

at 3 positions, Booklet folding and stapling up to 40 pages

(10 sheet). Requires AK-71P, RA-1 is optional

PH-2B/PH-2C/PH-2D Punch unit for DF-75: 2-hole/4-hole/

Swedish type

CB-70 Printer cabinet: Desk with storage capacity,

Dimensions (W x D x H) 590 x 600 x 320 mm

KM-NET VIEWER

KM-NET Viewer is an advanced network management software tool that is compatible with all Kyocera printers and multifunctional products as well as those of other vendors by using the standardised protocol SNMP.

The settings of all printers on the network can be checked visually and amended from any Windows PC. KM-NET Viewer also acts as a valuable, real-time early warning system by sending eMail-messages.

CompactFlash® card

The CompactFlash® card offers abundant storage space for typefaces, logos, standard forms and signatures as well as individual API or PRESCRIBE macros.

Hard disk

The optional hard disk offers even more efficient document management. At the same time it enables the management of print data with eMPS functions such as quick copy, proof and hold, private print and job storage.

AK-71P Attachment unit: Attachment unit required for printers

RA-1 Reverse unit: Reverse unit for DF-75

Memory

Printer memory:

2 slots for 16, 32, 64, 128 or 256 MB

Compact Flash® card: 1 slot (8, 16, 32, 64 MB) forms, fonts,

logos, macro storage

HD-4ME Hard disk: 20 GB, storage of data, forms, fonts and

job management

Optional interface:

10/100 BaseTX Ethernet comes as standard with the FS-9120DN/9520DN. If you have a requirement to connect to another network you can add another network card (2 maximum)

IB-21E Network card: 10Base-T/100Base-TX

SB-110FX Network card: 10Base-T/100Base-TX/100Base-FX,

FibreOptic

SB-50 Network card: 10Base-FL, Fibrelink

SB-60 Network card: TokenRing STP/UTP

SB-70 Network card: Wireless LAN - IEEE 802.11b

IB-11 Serial interface: RS-232C Serial interface

(up to 115.2 kbps)

CONSUMABLES

TK-70 Toner kit: Microfine toner for 40,000 pages

with 5% coverage (ISO 10561B)

Capacity of starter toner is 20,000 pages with 5% coverage

(ISO 10561B)

WARRANTY

1 year on-site warranty as standard. Kyocera Mita guarantees the drum and developer for 3 years or 500,000 pages (whichever occurs sooner), provided each printer is used and cleaned in accordance with the service instructions.



Up to 5 years on-site warranty extension for printer and options. The warranty is limited to 2 million pages (3 million pages with KYOlife).



Your Kyocera Mita Business Partner:

Kyocera Mita (UK) Ltd, 8 Beacontree Plaza, Gillette Way, Reading RG2 0BS
Tel 0118 931 1500, Fax 0118 931 1108, email: Kyoceramita@kyoceramita.co.uk, www.kyoceramita.co.uk

Kyocera Mita does not warrant that any specifications mentioned will be error-free. Specifications are subject to change without notice. Information is correct at time of going to press. All other brand and product names may be registered trademarks or trademarks of their respective holders and are hereby acknowledged.

