

FS-C5016N

discover

- ▶ desktop colour printing with an unbeatable cost-per-page



Ecosys

 **KYOCERA**
mita

► Introducing the FS-C5016N

- 16ppm A4 colour/mono ECOSYS printer
- Crisp 600dpi resolution
- USB, parallel and network interface as standard
- 600 sheet input as standard from 2 sources
- 2,100 sheet max input from 5 sources
- Optional duplex
- One year on-site warranty as standard
- Lowest cost per page in its class for colour and mono



► Explore the new world of colour

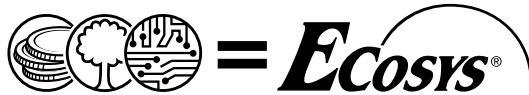
The FS-C5016N is the ideal solution for your business colour printing needs. The compact FS-C5016N combines Kyocera Mita's industry leading expertise in office printing with ECOSYS technology to deliver best-in-class cost effectiveness in colour and monochrome print solutions for your office. The FS-C5016N will bring the power of colour to your business communications. Achieve high quality colour or mono output, both at a fast 16 pages per minute.

The network-ready FS-5016N will give everyone in a workgroup or department the opportunity to enjoy the power of colour. Use colour in your internal and external business communications and experience the dramatic impact it will bring. You will never want to go back to mono.

▶ ECOSYS

ECOSYS. ECONomy. ECOlogy. SYStem printing.

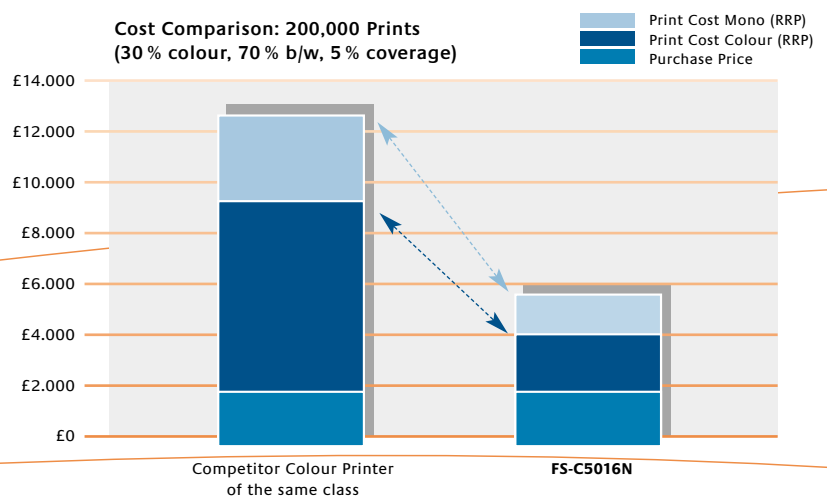
Thanks to ECOSYS technology on which the FS-C5016N is based, the drum is designed to last up to 200,000 prints before it needs to be replaced. This means that not only is the FS-C5016N very reliable, and requires a lot less maintenance than comparable models, but the cost per page is very low and impact on the environment is minimised.



▶ The FS-C5016N has the lowest consumables cost in its class

With the FS-C5016N, colour is no longer an expensive luxury. It not only delivers the lowest cost per page in colour – it even beats many monochrome laser printers for consumables cost when printing in black & white. Its best-in-class cost per page means the FS-C5016N literally pays for itself in a short time – especially in a network-printing environment so you can afford to use it for both mono and colour documents.

An unbeatably low consumables cost in colour or black & white: the FS-C5016N outperforms comparable products from other vendors



OVER



► Small footprint. Big performance.

In any environment, space is a precious resource. In the office especially, features such as ergonomic design, waste minimisation and a “small footprint” all help you to work more efficiently. Comparable models from other vendors require up to 75% more space. The FS-C5016N is compact and quiet enough to sit on your desk, yet it offers the quality and performance of a network printer.

Dimensions of a competitor's colour printer

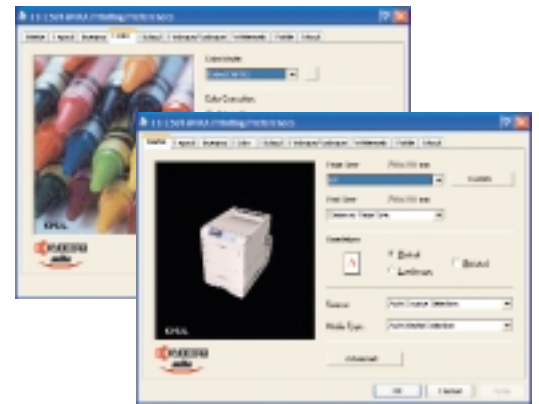


► Speedy Tandem System

It is unimaginable to think there are four separate drums, developing units and toners for each colour in such a compact printer. It's true - courtesy of the one-pass system. There's no waiting around for your full colour prints, because the FS-C5016N utilises a one-pass system so your output is produced at a speedy 16ppm whether in colour or mono.

► One system to control your whole network.

Kyocera Mita understands the importance of seamless communication between every element of your office network. That's why we developed our universal software platform. All of our products – from the smallest stand-alone printer to the largest multifunctional system – are based on the same shared software platform, using the same printer controller and sharing the same driver technology. And because the FS-C5016N comes with outstanding connectivity features as standard – USB, parallel port plus a built-in Ethernet network interface – it's ready to become part of your office network from the very first page.



**Intuitive and easy to operate:
the Kyocera Mita printer driver**

► KM-NET Viewer

Open the door to an entirely new dimension of business communication with the FS-C5016N. The applications for this compact, and cost-effective colour printing are limited only by your imagination: stationery, newsletters, direct mail and flyers, presentations, business reports, submissions – every element of your business communications can be enhanced by affordable colour. State-of-the-art printing technology for a remarkably affordable price: discover the FS-C5016N today.



**Tailored to your needs: the
FS-C5016N offers a broad range
of paper-handling options**

▶ Powerful job management functions

A variety of functions are available with the addition of a hard disk (HD-4), which are known as enhanced Multiple Printing System (eMPS). These print functions are instantly and easily accessible, and they make printing more flexible and convenient than ever.

QUICK COPY

Allows temporary storage of print data on the hard disk. Stored data can be re-printed anytime by operating the front panel, eliminating the need to resend from your PC.

PROOF AND HOLD

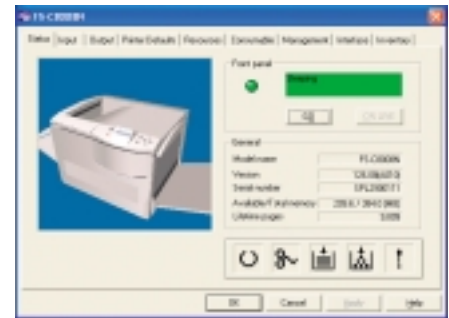
Save on paper, toner and time. Print, check one copy and then specify number of remaining copies to be printed.

PRIVATE PRINT

Send confidential or private documents to the printer and then start the printing process by entering a PIN number, specified by the printer driver, on the front panel.

VIRTUAL MAILBOX

Provides a personalised storage space on the hard disk for each member of the team, like a real mailbox. Documents sent to the virtual mailbox can be accessed through the printer's control panel, allowing you to print them at your convenience.



▶ Explore a new world of possibilities



Open the door to an entirely new dimension of business communication with the FS-C5016N. The applications for this compact, and cost-effective colour printing are limited only by your imagination: stationery, newsletters, direct mail and flyers, presentations, business reports, submissions – every element of your business communications can be enhanced by affordable colour. State-of-the-art printing technology for a remarkably affordable price: discover the FS-C5016N today.

A close-up photograph of a child's hands painting a colorful abstract artwork on a canvas. The child is wearing a blue shirt. The artwork features vibrant blue, green, and yellow strokes. The word "discover" is overlaid in large, white, lowercase letters at the top of the image.

discover

► Are your business communications ready for the enormous impact of low-cost colour printing?

Are your business communications ready for the enormous impact of colour? Colour printing empowers your business in so many ways. Research has shown that colour makes documents more effective. It increases readers' attention levels. It enhances brand identification. It even improves learners' recall of training material. In short, colour is a powerful tool for every aspect of successful business communications.

THE COLOUR ADVANTAGE

Colour gets your ideas noticed. It enriches your documents by communicating your ideas transparently, drawing attention to key information and helping you get your message across. Your mailings and flyers present a strong, professional image when printed in colour. For high-impact, successful business communication, colour gives you the competitive edge.

FS-C5016N

Colour/Monochrome Printer

ECOSYS colour technology is based on extremely durable components. Because of its cartridge-free design, ECOSYS printers operate with the lowest cost per page in their class, and they are particularly eco-efficient. Thanks to their numerous paper options and modularity, all ECOSYS printers can develop to meet further requirements.

System platform

The FS-C5016N delivers outstanding network connectivity and problem-free system administration. Kyocera Mita's single-platform technology means that the same driver can be used for every KM print device in the network: from single-user desktop printers to high-end multifunctional systems. Only Kyocera Mita offers this effortless combination of IT sophistication and high-performance paper handling expertise.

GENERAL

Technology: Kyocera Mita Colour ECOSYS

Type: Desktop

Engine speed: Max. 16 pages per minute b/w and full colour
Up to 16 images per minute in duplex mode (optional)

Resolution: 600 x 600 dpi

Multi-Bit Technology for optimum colour output

Time to first page: 16 seconds or less

Warm-up time: 80 seconds or less from power on

Duty cycle: Max. 85,000 pages per month (A4)

Power source: AC 220 ~ 240 V, 50/60 Hz

Power consumption: Printing 483 W, Stand-by 202 W,

Power-Saving (ECOpower) 24 W

Noise (ISO 7779): Printing 53 dB (A), Stand-by 36 dB (A),

Power-Saving (ECOpower) 0 dB (A)

Dimensions (W x D x H): 345 x 470 x 385 mm

Weight: Approx. 22 kg

Certification: GS/TÜV/CE

This printer is produced according to the quality norm ISO 9001 and the environmental guidelines ISO 14001

PAPER HANDLING

All mentioned paper capacities are based on a paper thickness of max. 0,11 mm. Please use paper recommended by Kyocera Mita under normal environmental condition.

Input capacity: 500-sheet universal cassette, 60-105 g/m², A4, B5, A5, Letter, Custom (148 x 210 – 216 x 356 mm), 100-sheet multi-purpose tray, 60-200 g/m², A4, B5, A5, Letter, Legal, Custom (70 x 148 – 216 x 297 mm), Max. 2,100 sheets

Output capacity: 250-sheet face-down with paper full sensor,
Face-up output with optional PT-300

PRESCRIBE IIe/IIc

With the Kyocera Mita page design and control language PRESCRIBE IIe/IIc, even complex graphics, logos and forms (even multipart forms) can be created independently of the system and saved and updated in the print controller. Consequently, integration into print files no longer applies. They are only accessed as required and therefore relieve the load on the network.

Typefaces and barcodes

The 136 scalable PostScript fonts provide high flexibility for all applications. A total of 45 integrated barcodes are computed automatically by the printer and printed in the desired size, alignment and position.

CompactFlash® card

The optional CompactFlash® card offers abundant storage space for typefaces, logos, standard forms and signatures as well as individual API or PRESCRIBE macros.

Hard disk

The optional hard disk (HD-4) offers even more efficient document management. At the same time it enables the management of print data with eMPS functions such as quick copy, proof and hold, private print and job storage.

KM-NET VIEWER

KM-NET Viewer is an advanced network management software tool that is compatible with all Kyocera Mita printers and multifunctional products as well as those of other vendors by using the standardised protocol SNMP. The settings of all print devices on the network can be checked visually and amended from any Windows PC. KM-NET Viewer also acts as a valuable, real-time early warning system by sending eMail-Messages to users/administrators.

CONTROLLER

Processor: PowerPC750CXe / 400 MHz

Memory: 96 MB RAM + EComemory, Max. 608 MB in 2 DIMM slots

Emulations: PCL6 (PCL5c/PCL-XL), KPDL3 (PostScript 3 compatible) with Automatic Emulation Sensing (AES), PDF Direct Print

Controller language: PRESCRIBE IIc

Fonts: 80 outline fonts (PCL6: PCL5c/PCL-XL),

136 outline fonts (KPDL3); 1 bitmap font;

45 types of one-dimensional barcodes, plus 1 type of

two-dimensional barcode (PDF-417).

Downloadable fonts: Kyocera Mita, PCL & TrueType

format, Type 1 + 3 font format

Print features: eMPS – for quick copy, proof and hold, private print, job storage and job management functionality with optional hard disk

INTERFACE

Standard interface: High speed bi-directional parallel (IEEE 1284), USB (version 2.0), Fast Ethernet 10/100Base-TX, KUIO-LV Option-Interface Slot

Multiple interface connection (MIC): MIC allows for simultaneous data transfer via up to four (MIC) interfaces, with each interface having its own virtual printer.

CONSUMABLES

Toner-Kit TK-500K: Microfine Toner Black for 8,000 pages with 5 % A4 coverage (ISO 10561B).

Toner-Kit TK-500C: Microfine Toner Cyan for 8,000 pages with 5 % A4 coverage (ISO 10561B).

Toner-Kit TK-500M: Microfine Toner Magenta for 8,000 pages with 5 % A4 coverage (ISO 10561B).

Toner-Kit TK-500Y: Microfine Toner Yellow for 8,000 pages with 5 % A4 coverage (ISO 10561B).

OPTIONS

Paper handling

PF-60 Paper Feeder: 500-sheet, 60-105 g/m², A4, B5, A5, Letter, Legal, Custom (148 x 210 – 216 x 356 mm)
Max. 3 PF-60

DU-300 Duplex Unit: Double-sided printing, 60-105 g/m², A4, B5, A5, Letter, Legal, Custom (148 x 210 mm – 216 x 356 mm)

PT-300 Paper Tray: Face-up paper output tray

Memory

Printer Memory: 2 slots (32, 64, 128, 256 MB DIMM)

CompactFlash® card: 1 slot (16, 32, 64 MB) for printing forms, fonts, logos, macro storage.

Hard disk HD-4: 10 GB HDD for easy document management

Optional interfaces

10/100BaseTX Ethernet comes as standard with the FS-C5016N. If you have a requirement to connect to another network you can add another network card.

Fast Ethernet IB-21E: Internal multi-protocol 100BaseTX Ethernet interface

Token Ring SB-60: Internal multi-protocol 4/16Mbit Token Ring (STP/UTP) interface

Fibre Optic SB-110FX: Internal multi-protocol 100BaseFX Fibre Optic interface

Fibre Optic SB-50: Internal multi-protocol 10BaseFL Fibre Optic interface

Wireless LAN SB-70: Multi-protocol 11Mbit Wireless LAN internal interface

Multi-protocol network cards support the following operating systems: Novell Netware 3.x, 4.x, 5.x, UNIX, BS2000, Apple Systems 7.x, 8.x Windows 95, 98, ME, 2000, XP, Windows NT 3.x, 4.x And the following protocols: IPX/SPX (NDS, Binary, R/NPRINTER), TCP/IP (BOOTP, DHCP, RARP, ARP, IP, UCMIP, UDP, TCP, FTP, TFTP, LPD), WINS, SNMP, SMTP, Ethertalk/TokenTalk Phase 2, HTTP / HTML

Warranty

1 year on-site warranty as standard. Kyocera Mita guarantees the drums and developers for 3 years or 200,000 pages (whichever occurs sooner), provided each printer is used and cleaned in accordance with the service instructions.



The up to 5 year on-site warranty extension for printer and options.



Your Kyocera Mita Business Partners

Kyocera Mita (UK) Ltd, 8 Beacontree Plaza, Gillette Way, Reading RG2 0BS
Tel 0118 931 1500, Fax 0118 931 1108, email: Kyoceramita@kyoceramita.co.uk, www.kyoceramita.co.uk

Kyocera Mita does not warrant that any specifications mentioned will be error-free. Specifications are subject to change without notice. Information is correct at time of going to press. All other brand and production names may be registered trademarks or trademarks of their respective holders and are hereby acknowledged.

