

XEROX®

Technology | Document Management | Consulting Services

Professional Colour Matching from the colour leader

For graphic artists and colour professionals, colour matching is a critical task. Xerox PhaserMatch® 4.0 colour management and calibration software brings stability to the process – helping to deliver consistent, predictable and reproducible colour matching between your Phaser 7760 colour printer and other CMYK or RGB output devices like the DocuColor® 12 copier/printer or iGen3™ Digital Production Press.

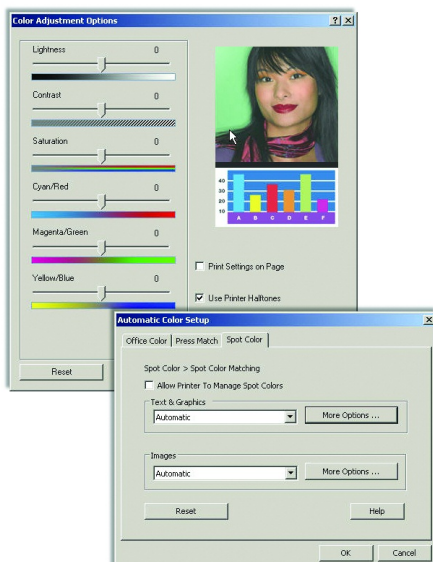
The TekColor® Corrections built-in to your Phaser 7760 colour printer include common profiles such as EuroScale, Commercial Press and sRGB. These provide good results, but don't account for unique matching requirements or specific media types. Xerox PhaserMatch 4.0 software provides advanced functionality to edit and create TekColor Corrections and calibrate the colour of the Phaser 7760.

TEKCOLOR CORRECTIONS

The Phaser 7760 colour printer has a number of TekColor Corrections built-in to match the output of a host of devices. These TekColor Corrections effectively warp the colour gamut of the Phaser 7760 printer to more closely mimic that of the target device.

Using the "Automatic" mode for managing TekColor Corrections within the Phaser 7760 printer driver enables the printer to automatically detect the office graphics, press separations, black and white graphics and spot colours within a document – and apply the specified TekColor Correction to each of them. This ensures the Phaser 7760 will print your RGB, CMYK and Pantone colours to your specifications.

You can further define which TekColor Corrections the Phaser 7760 will apply to each graphical element on the page – consistently delivering the output you expect. Each Phaser 7760 includes a built-in library of TekColor Corrections for a wide variety of output devices, including computer displays, other printers and multifunction systems, and production-class printers.



PhaserMatch® 4.0
Colour Management and
Calibration Software

PhaserMatch 4.0 Software at a Glance

With PhaserMatch 4.0, you can:

- Calibrate your printer
- Edit existing TekColor corrections
- Create new TekColor corrections targeted to specific output devices (a specific printing press, LCD monitor, etc.)
- Save new/edited TekColor corrections for downloading to the printer

PhaserMatch 4.0 benefits include:

- Colour calibration for accurate, consistent results
- Gain control over repeatable colour – saving time and money
- Achieve greater colour accuracy for design visuals and pre-press proofs
- Reduce iterations and ensure digital proofs meet press colour expectations



PHASERMATCH 4.0 COLOUR MANAGEMENT AND CALIBRATION SOFTWARE

PhaserMatch 4.0 builds and extends on the capabilities of standard TekColor Corrections by giving you even more control over the colour output of your Phaser 7760 colour printer. In addition to colour calibration capabilities, PhaserMatch 4.0 delivers two primary capabilities to help you achieve the output your business needs:

- **Edit existing TekColor Corrections** – Using the “Edit Profile” feature, you can edit an existing TekColor Correction and fine-tune the colour output and colour matching capabilities of your Phaser 7760 colour printer. Once you have edited the TekColour Correction to your specifications, you can download the edited profile to the Phaser 7760 – making it available to all users of the printer via the print driver interface.

- **Create new TekColor Corrections** – Starting with the ICC Device Profile of the Phaser 7760 colour printer and your intended target output device, PhaserMatch 4.0 can create a new TekColor Correction for your Phaser 7760. Again, you can download the new TekColor Correction to your Phaser 7760 printer – making it available in the print driver for all of your users.
- **Advanced editing features** – A range of advanced features are also available in PhaserMatch 4.0 to further hone and refine the colour output of your Phaser 7760.

PHASERCAL COLOUR CALIBRATION SOFTWARE

PhaserCal is the colour calibration application within PhaserMatch 4.0. Colour laser printers should be periodically calibrated to eliminate changes in printed colours caused by environmental conditions and normal wear and tear on the printer’s consumables. PhaserCal can account for these changes and maintain consistent print output.

PhaserCal offers two colour calibration methods:

- PhaserCal can control and communicate with a spectrophotometer connected to your computer, or a data file with measurement information can be imported into PhaserCal – resulting in highly accurate colour calibration for your Phaser 7760 colour printer.
- Alternatively, a visual calibration method allows for quick and convenient checks without requiring a spectrophotometer.

Both calibrations are standard functionality on every Phaser 7760 colour printer.

AVAILABILITY

PhaserCal comes standard on the Phaser 7760DN model. PhaserMatch 4.0, which includes PhaserCal, is standard on the Phaser 7760GX and Phaser 7760DX models – and is offered as an option for the Phaser 7760DN.

SYSTEM REQUIREMENTS

Apple Macintosh

- Apple Power Macintosh computer
- Macintosh OS X, version 10.2 (version 10.2.3 recommended) operating system
- 128 MB RAM required, 256 MB RAM recommended
- 600 x 800 dpi resolution colour monitor able to display thousands of colours
- Xerox Phaser 7760, 7750, or 7700 colour laser printers only
- Installation of the Xerox Phaser 7760, 7750, or 7700 Macintosh printer driver (this driver must be used to utilise PhaserMatch 4.0 TekColor corrections)

Microsoft Windows

- Intel Pentium III computer or better
- Windows 2000 or Windows XP operating system
- 128 MB RAM required, 256 MB RAM recommended
- 600 x 800 dpi resolution colour monitor able to display thousands of colours
- Xerox Phaser 7760, 7750, or 7700 colour laser printers only
- Installation of the Xerox Phaser 7760, 7750, or 7700 Windows printer driver (this driver must be used to utilise PhaserMatch 4.0 TekColor corrections)

