



## Powerful, versatile solutions partner with superb long term value.

Designed for large workgroups, the high-performance Dell B5465dnf Mono Laser Multifunction Printer lets you print, copy, fax, and scan — all from one powerful device. With fast print speeds, duplexer, built-in Ethernet and productivity tools tailored for your business needs, this versatile workhorse will enable you to accomplish more with ease.

Featuring a low cost per page, high duty cycle and robust scalability, this printer offers outstanding value and can easily meet demanding business printing needs. Help improve office efficiency by customizing this powerful workgroup multifunction printer with various accessories and options.



Dell™ B5465dnf Mono Laser Multifunction Printer



# Dell B5465dnf

## Mono Laser Multifunction Printer

### Performance and versatility at outstanding value

- Print, scan, copy and fax from a single device and get optimal networking performance with built-in 1000Mbps Gigabit Ethernet.
- Generate professional business print-outs at blazing speeds of up to 70 pages per minute (ppm) (letter) / 66 ppm (A4)<sup>1</sup>. First page out time is only 4 second with the powerful 800 MHz Dual-Core processor and 1GB<sup>2</sup> on-board memory.
- Scan two-sided documents at outstanding speeds of up to 72 sides per minute (spm) (letter) / 70 spm (A4) with the built-in Duplex Automatic Document Feeder (DADF) designed with a dual scan sensor.
- Boasting a high maximum duty cycle of up to 300,000 pages per month<sup>3</sup>, the Dell B5465dnf is able to handle heavy workloads reliably.
- Save on printing costs with the optional Extra High Yield toner cartridge. With a 45,000 page yield<sup>4</sup>, it offers a low cost per page (CPP) of US 1 cent per page<sup>5</sup>.
- Gain peace of mind with standard 3 Years Limited Hardware Warranty<sup>6</sup>, which includes fuser replacement to help save you from high replacement costs.

### Robust scalability to meet evolving productivity needs

- Expand the input paper capacity to meet higher printing demands with the optional 550-sheet and 2,100-sheet trays (sold separately). Add an optional 550-sheet tray and one 2,100-sheet high capacity input tray<sup>7</sup> to get a maximum input capacity of 3,300-sheets.
- Print on a variety of paper types such as labels, envelopes and transparencies. You can even print on specialty or smaller sized media.
- Besides the standard USB connection or Gigabit Ethernet connection, the optional Wireless Print Server (sold separately) can enable 802.b/g/n wireless data transfer for wireless printing<sup>8</sup>.
- Dell's optional Hard Disk is a secure hard disk with encryption to protect user data. It is used to buffer jobs, collate large jobs, store forms, fonts or macros and enables job building.

### Advanced security features designed to protect data

- Help prevent confidential documents sent to the printer from being viewed by others with the PIN authentication feature. This feature allows you to set a PIN that must be entered on the printer to retrieve print jobs. A maximum number of PIN entry attempts may also be specified so when the number of PIN entry attempts exceeds the specified amount, all of the related print jobs are deleted.
- Protect your data with SNMPv3 support for added network security, while the optional Wireless Print Server supports WPA2.0 and 802.1X wireless security.
- Dell B5465dnf automatically inspects downloaded firmware updates for the appropriate digital signatures. Firmware that is not correctly packaged and signed is rejected.
- With Access Controls, you can choose from a drop-down list of available security templates to control local and remote access to specific menus, functions and workflows. It also provides the ability to disable functions entirely.
- Physically lock the printer with a Kensington Lock. Use the optional lockable paper tray to protect costly or sensitive media, such as company letterheads or checks (Kensington Lock and optional Lockable Tray sold separately).

### Boost workforce efficiency

- Easily navigate and adjust menu settings with the 10.2 inch LCD and intuitive control panel.
- With the Remote Operator Panel application on this printer, you can remotely access the printer control panel display using the Embedded Web Server (EWS).
- Print directly from mobile devices with Dell Mobile Print app<sup>9</sup> for Android™.



**Fast data transmission** with Gigabit Ethernet 10/100/1000.



**Easily connect to a wireless network** with the optional Wireless Print Server (sold separately).



**Ease of operation** with intuitive 10.2 inch LCD touch screen and control panel.



**Scan two-sided documents** at outstanding speeds of up to 72 sides per minute (spm) (letter) / 70 spm (A4) with the built-in dual scan sensor DADF



**Increase efficiency** with fast print speeds of up to 70ppm (letter) / 66ppm (A4)<sup>1</sup> and automatic two-sided printing.



Print directly from Android™ mobile devices using **Dell Mobile Print**<sup>9</sup>.

1. Measured in accordance with ISO IEC 27434 methodology. Actual print speeds will vary with use.

2. 1 MB means 1 million bytes, 1 GB means 1,000 megabytes or 1,000,000,000 bytes; total accessible capacity varies depending on operating environment.

3. Duty cycle is defined as the maximum number of imaged outputs a device could deliver in a month. This metric provides a comparison of robustness in relation to other Dell printers and multifunction printers.

4. Toner yield based on testing in accordance with ISO/IEC 19752. Yields vary with usage and environmental conditions.

5. Cost Per Page (CPP) model assumes exclusive use of Extra High Yield Use and Return consumables after ship-with consumables run out. CPP calculation is based on list prices of Dell Extra High Yield Use and Return Toner (45,000 page yield).

6. For a copy of Limited Hardware Warranty, write Dell USA LP, Attn: Warranties, One Dell Way, Round Rock, TX 78682 or visit [dell.com/warranty](http://dell.com/warranty). For warranty information on other countries, see website: [dell.com/servicecontracts](http://dell.com/servicecontracts) and then select the country.

7. Purchase of the optional Castor Base is required when using the optional 2,100-sheet input tray.

8. PC must have a wireless card or be connected to a wireless network and have the printer software installed for proper function.

9. The printer and the mobile device must be connected to the same wireless network.

Dell B5465dnf Mono Laser Multifunction Printer is equipped with solutions<sup>1</sup> that are specifically tailored to ease workload and increase productivity, making it the ideal versatile office solutions partner.



#### Card Copy

Quickly and easily copy insurance, identification and other wallet-size cards. You can scan and print both sides of a card on a single page, saving you paper and showing the information on the card in a more convenient manner.

#### Forms and Favorites

Streamline work processes by letting users to quickly access and print frequently used forms stored in a network folder, FTP site, or Web site and print directly from the printer LCD screen.

#### My Shortcuts

Create shortcuts on the printer home screen, with settings for up to 25 frequently used copy, fax or e-mail destinations.

#### Scan to Network

Scan a document and send it to a shared network folder. Customers can define up to 30 unique folder destinations.

#### Multi Send (with Single Touch)\*

Scan a document and send to multiple destinations including workgroup users, FTP, e-mails and network folders with ease.

\*Optional hard disk required, sold separately

## Be in full control of the printer fleet with Dell OpenManage™ Printer Manager V2 (OMPM)

Quickly and easily monitor, manage and report the status of network printers from the Dell™ OMPM centralized dashboard.

Use Dell OMPM to:

- Remotely locate printers that have errors and identify problems, enabling IT managers to take the appropriate actions to remedy the situation.
- Obtain alerts via email notifications, when a printer needs attention.
- Remotely monitor toner and paper-in-tray status (applicable to most printer models).
- Group multiple printers with similar setups together for easy upgrades of all the printers in the group.



## Simplify workload with Dell Open Printer Driver (OPD)

Eliminate the clutter on PCs by replacing multiple print drivers with one versatile solution, the Dell Open Printer Driver (OPD). It can help to reduce the huge workload of driver deployment and setting changes.

1. May require additional setup/configuration via the Embedded Web Server (EWS).

# Dell B5465dnf

## Mono Laser Multifunction Printer



1. Dual scan sensor Duplex Automatic Document Feeder (DADF)
2. Flatbed scanner
3. Control panel - 10.2" Color LCD touch screen, 19 buttons, numeric pad, menu, 1 status LED
4. Ethernet port (rear of printer)
5. 100-sheet multipurpose tray
6. 550-sheet input tray

### Consumables

**Ship-with toner cartridge capacity<sup>1</sup>**  
25,000 pages

**Standard capacity toner cartridge<sup>1</sup>**  
6,000 pages

**High capacity toner cartridge<sup>1</sup>**  
25,000 pages

**Extra high capacity toner cartridge<sup>1</sup>**  
45,000 pages

**Imaging drum capacity**  
100,000 pages

### Warranty and service options

#### Standard service

3 Years Limited Hardware Warranty<sup>2</sup> and  
3 Years Next Business Day On-site Service after  
Remote Diagnosis<sup>3</sup>

#### Service upgrade options

- 1 - 5 Years 4-hour On-site Support<sup>4</sup>
- 1 - 5 Years Next Business Day On-site Service after Remote Diagnosis<sup>3</sup>
- 1 - 5 Years Dell ProSupport<sup>5</sup>

## Dell B5465dnf accessories (sold separately)



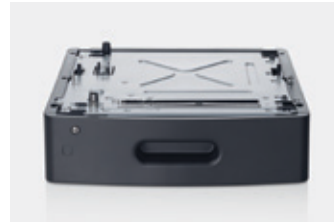
#### Wireless Print Server

Print securely from virtually anywhere in your office without the constraints of cables and port locations. It supports WPA2.0 and 802.1X wireless security to protect your data.



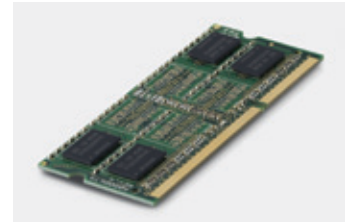
#### Hard disk

Improve the performance and functionality of your printer and encrypt your data for added security.



#### 550-sheet lockable input paper tray

Secure your documents such as forms or bank checks with the optional lockable tray.



#### 2GB<sup>6</sup> memory DIMM

Add extra memory to your printer to achieve faster processing speeds.

#### Prescribe card

Enables the printer to understand print and data formatting instructions sent in Prescribe commands. It provides simple compatibility with mainframe and mid-range systems and provides an easy transition to more common printer languages such as PostScript® or PCL.

#### Print encryption card

Provides high security with minimal administrator support and helps strengthen security for confidential information when transmitted over a TCP/IP network.

#### IPDS card

Provides IS or IT managers an affordable printing solution in a distributed or local area network for applications or software that generate AFP/IPDS.

#### Fibre card kit

Enables connection to a fibre network for fast data transmission.

#### Forms and Bar Code card

Save time and cost by eliminating pre-printed forms. By using this card, solution providers can create powerful printing applications to convert data into a modern form containing variable text, images and industry standard bar codes.

1. Toner yield based on testing in accordance with ISO/IEC 19752. Yields vary with usage and environmental conditions.

2. For a copy of Limited Hardware Warranty, write Dell USA LP, Attn: Warranties, One Dell Way, Round Rock, TX 78682 or visit [dell.com/warranty](http://dell.com/warranty). For warranty information for other countries, see website: [dell.com/servicecontracts](http://dell.com/servicecontracts) and then select the country.

3. Next Business Day On-Site Service after Remote Diagnosis: Determination by online/phone technician of cause of issue; may involve customer access to inside of system and multiple or extended sessions. If issue is covered by Limited Hardware Warranty and not resolved remotely, technician and/or part will be dispatched, usually within 1 business day following completion of Remote Diagnosis. Availability varies. Other conditions apply.

4. Replacement part/unit dispatched, if needed, following completion of phone/online diagnosis. Fee charged for failure to return defective unit. Availability varies. Other conditions apply.

5. Availability and terms of Dell Services vary by region. For more information, visit [dell.com/service-descriptions](http://dell.com/service-descriptions)

6. 1 MB means 1 million bytes, 1 GB means 1,000 megabytes or 1,000,000,000 bytes; total accessible capacity varies depending on operating environment.

# Configuration options

■ Standard □ Optional (sold separately)



## Standard configuration:

■ Standard tray	550-sheet
■ Multipurpose tray	100-sheet
<hr/>	
<b>Total</b>	650-sheet



## Extended configuration:

■ Standard tray	550-sheet
■ Multipurpose tray	100-sheet
□ 550-sheet paper tray	550-sheet
<hr/>	
<b>Total</b>	1,200-sheet



## Extended configuration:

■ Standard tray	550-sheet
■ Multipurpose tray	100-sheet
□ 2x 550-sheet paper trays	1,100-sheet
<hr/>	
<b>Total</b>	1,750-sheet



## Extended configuration:

■ Standard tray	550-sheet
■ Multipurpose tray	100-sheet
□ 3x 550-sheet paper trays	1,650-sheet
<hr/>	
<b>Total</b>	2,300-sheet



## Extended configuration:

■ Standard tray	550-sheet
■ Multipurpose tray	100-sheet
□ 2,100-sheet paper tray	2,100-sheet
□ Caster base <sup>1</sup>	-
<hr/>	
<b>Total</b>	2,750-sheet



## Extended configuration:

■ Standard tray	550-sheet
■ Multipurpose tray	100-sheet
□ 550-sheet paper tray	550-sheet
□ 2,100-sheet paper tray	2,100-sheet
□ Caster base <sup>1</sup>	-
<hr/>	
<b>Total</b>	3,300-sheet

**Note:**

The optional 2,100-sheet input tray must be used in conjunction with the optional Caster base to form the base of the printer; ensure that total height of the selected configuration is appropriate for your office environment.

1. Purchase of optional Caster base required when using optional 2,100-sheet bottom tray (optional Caster base and 2,100-sheet paper tray, sold separately).

## Product Specifications

<b>Printer specifications</b>	<b>Print speed</b>	Up to 70 ppm (letter) and up to 66 ppm (A4) <sup>1</sup> (Actual print speed vary with use)
	<b>First page out time from Ready state</b>	Less than or equals to 4.0 seconds
	<b>Print resolution</b>	600 X 600 dpi (Default), up to 1200 x 1200 dpi (Max)
	<b>User interface</b>	LCD: 10.2" Color Touch, Backlight: Negative Mode (White text on black), Buttons: 19 Buttons, Status LED: 1 LED ("Ready" / "Error")
	<b>Print language</b>	PCL-XL on CD; PCL-XL, PCL5e, PCL5C and PostScript® 3 (UPD); XPS (Web); PostScript® 3 on CD (Macintosh Only), PDF v1.6, PPDS level 4
	<b>Fonts</b>	3 of 9 scalable PCL5e fonts in Narrow, Regular and Wide; 158 scalable PostScript® fonts; 2 PCL bitmap fonts; 39 scalable PPDS fonts; 5 PPDS bitmap fonts; 84 scalable PCL fonts; OCR-A, OCR-B scalable PCL5e fonts
	<b>Processor speed/memory</b>	800 MHz / 1024 MB <sup>2</sup>
	<b>Memory expansion</b>	3 GB <sup>2</sup> max
	<b>Maximum duty cycle</b>	Up to 300,000 pages per month <sup>3</sup>
<b>Recommended monthly print volume</b>	8,000 to 30,000 pages per month	
<b>Mobile printing</b>	Dell Mobile Print (Android™ mobile devices) <sup>4</sup>	
<b>Printer management</b>	Dell Printer Configuration Web Tool (EWS), Dell OpenManage™ Printer Management 2.0	
<b>Scan specifications</b>	<b>Scan type</b>	Flatbed scanner with DADF (dual scan sensor)
	<b>DADF Input capacity</b>	150 pages 20 lb / 75 gsm bond
	<b>Scan resolution</b>	Optical: 600 x 600 dpi
	<b>Scan speed</b>	
	Simplex (A4/Letter)	Black: Up to 67 / 70 spm; Color: Up to 67 / 70 spm
	Duplex (A4/Letter)	Black: Up to 70 / 72 spm; Color: Up to 66 / 68 spm
	<b>Scan utilities/applications</b>	Printer Home (also referred to as Device Dashboard), Apple Image Capture App (Mac only), eSF: Remote Operator Panel, My MFP & Scan to Network folder, Linux Local Scan Drivers (Web only), Linux Network Scan Drivers (JScan, Web only)
	<b>Scanning features</b>	<b>Scan to USB:</b> Quick Scan, Custom Scan (specify resolution, color, content, darkness, file type, page setup, document size), Scan Preview, Change File Name <b>Walk-up scan:</b> Email, FTP, LDSS, Network Folder, USB connected computer
<b>Scan to media (file format)</b>	PDF, Secure PDF, TIFF, JPEG, XPS, BMP	
<b>Scan size (max)</b>	Flatbed: 8.5" x 14" (203.2 mm x 355.6 mm); ADF: 8.5" x 14" (203.2 mm x 355.6 mm)	
<b>Copy specifications</b>	<b>Copy speed (600 x 600 dpi)</b>	
	Single-page document	Up to 70 copies per minute (cpm)
	Multi-page document (DADF)	Up to 35 cpm (N to N)
	<b>Copy resolution</b>	75 dpi, 150 dpi, 200 dpi, 300 dpi, 600 dpi
	<b>Maximum copies</b>	999
	<b>Reduce/enlarge</b>	(-25% to 400%)
	<b>Copy settings</b>	Copy from Size, Copy to size, Scale (-25% to 400%), Darkness, Duplex, Collate, Content (Text, Text/Photo, Photo, Graphics), Save As Shortcut <b>Advanced Options:</b> Advanced Duplex, Advanced Imaging (Auto Center, Background Removal, Contrast, Mirror Image, Negative Image, Scan Edge to Edge, Shadow Detail, Sharpness, Color Dropout), Create Booklet, Cover Page Setup, Custom Job Build, Edge Erase, Header/ Footer, Margin Shift, Overlay, Paper Saver (2 Up, 4 Up), Separator Sheets (Between Pages, Between Copies, Between Jobs)
<b>Fax specifications</b>	<b>Modem speed/Fax transmission speed</b>	Up to 33.6 Kbps
	<b>Memory size</b>	18 MB <sup>2</sup> (without hard disk)
	<b>Speed dial</b>	Up to 500 locations
	<b>Fax settings</b>	<b>FAX Transmit (TX):</b> Broadcast, Delay/Schedule, Forward, Fax from PC, Manual, Secure <b>FAX Receive (RX):</b> Secure, Remote Fax Storage, Fax Shorcuts, Broadcast Fax, Manual Fax, Fax Forwarding, On Hook Dial, One Touch Dial, Fax Preservation, Delayed Send, Block Junk Fax, Fax Forwarding, Fax from PC, Fax Preservation, Fax Cover Page
<b>Automatic Document Feeder (ADF)</b>	<b>ADF type</b>	Duplex Automatic Document Feeder (DADF) with dual scan sensor
	<b>Input/output capacity</b>	Up to 150 sheets
	<b>Media size</b>	3" x 5" (76.2 mm x 127 mm) to 8.5" x 14" (203.2 mm x 355.6 mm)
<b>Connectivity</b>	<b>Standard interfaces</b>	Gigabit Ethernet 10/100/1000; Standard USB-B (Hi Speed) Device Port; 1 Front (Hi Speed) USB Host Port; 2 Rear (Hi Speed) USB Host Port; 2 Internal Solutions ports: 1 available, 1 dedicated to Standard HD; ISP Options include: Parallel, RS-232, Fiber, and Wireless
<b>Operating Systems</b>	<b>Windows</b>	Windows® 8, Windows® Server 2008 R2, Windows® Server 2008 R2 SP1, Windows® Server 2008 SP1 6, Windows® Server 2012, Windows® 7, Windows® 7 SP1, Windows® XP SP2, Windows® XP SP3, Windows® Server 2003 SP1, Windows® Server 2003 SP2, Windows® Vista SP1, Windows® Vista SP2
	<b>Macintosh</b>	Apple Mac OS X (10.5, 10.6, 10.7), Apple Mac OS X 10.8 (web only)
	<b>Others</b>	Linpus Linux Desktop 9.6 (Traditional Chinese), Red Flag Linux Desktop 6.0 (Traditional Chinese), Red Hat Enterprise Linux WS 4, 5, 6, SUSE Linux Enterprise Server 10.0, 11.0 SP1, SUSE Linux Enterprise Desktop 10.0, 11.0, openSUSE Linux 11.2, 11.3, 11.4, Linspire Linux 6.0, Debian GNU/Linux 5, 6, Ubuntu 11.04, 11.10, 12.04, Fedora 14, 15, Mint 9, 10, 11 PCLinux OS 2010.10, 2010.12

<b>Standard media types, sizes and paper weights</b>	<b>Standard tray</b>	
	Media types supported	A4, A5, A6, Executive, Folio, JIS B5, Legal, Letter, Oficio (Mexico), Statement, Universal, B5 Envelope, C5 Envelope, DL Envelope, 7 3/4 Envelope (Monarch), 9 Envelope, 10 Envelope, Other Envelope: 98.4 mm x 162 mm to 176 mm x 250 mm (3.9" x 6.4" to 6.93" x 9.84")
	Media sizes	Card stock, Dual Web Labels, Envelopes (smooth), Integrated Labels, Paper Labels, Plain Paper, Transparencies, Bond, Letterhead, Preprinted, Colored Paper, Custom, Light, Heavy, Rough/Cotton, Recycled
	<b>Multipurpose tray</b>	
	Media types supported	A4, A5, A6, Executive, Folio, JIS B5, Legal, Letter, Oficio (Mexico), Statement, Universal, B5, Envelope, C5 Envelope, DL Envelope, 7 3/4 Envelope (Monarch), 9 Envelope, 10 Envelope, Other Envelope: 98.4 mm x 162 mm to 176 mm x 250 mm (3.9" x 6.4" to 6.93" x 9.84"), Universal (only supported in standard output bin and Hi-Cap Output Option)
	Media sizes	Card stock, Dual Web Labels, Envelopes (smooth), Integrated Labels, Paper Labels, Plain Paper, Transparencies, Bond, Letterhead, Preprinted, Colored Paper, Custom, Light, Heavy, Rough/Cotton, Recycled
	<b>Bypass tray</b>	
	Media types supported	A4, A5, A6, Executive, Folio, JIS B5, Legal, Letter, Oficio (Mexico), Statement, Universal, B5, Envelope, C5 Envelope, DL Envelope, 7 3/4 Envelope (Monarch), 9 Envelope, 10 Envelope, Other Envelope: 98.4 mm x 162 mm to 176 mm x 250 mm (3.9" x 6.4" to 6.93" x 9.84"), Universal (only supported in standard output bin and Hi-Cap Output Option)
	Media sizes	Card stock, Dual Web Labels, Envelopes (smooth), Integrated Labels, Paper Labels, Plain Paper, Transparencies, Bond, Letterhead, Preprinted, Colored Paper, Custom, Light, Heavy, Rough/Cotton, Recycled
<b>Printable area</b>	Within 4.2 mm (0.165") of all edges of the media	
<b>Paper handling</b>	<b>Standard input sources</b>	550-sheet standard tray, 100-sheet multipurpose tray
	<b>Additional input capacity</b>	550-sheet input tray, 550-sheet lockable input tray, 2,100-sheet high-capacity feeder
	<b>Maximum input capacity</b>	3,300-sheet (via one 2,100-sheet high-capacity feeder and one 550-sheet input tray)
	<b>Duplexer</b>	Duplex Automatic Document Feeder (DADF) with dual scan sensor
	<b>Standard output destination</b>	550-sheet bin
	<b>Maximum output capacity</b>	550-sheet
<b>Physical specifications</b>	<b>Dimensions (W x D x H)</b>	Printer: 21.6" x 22.8" x 28.6" (548.1 mm x 578.4 mm x 727.3 mm) Shipping: 28.9" x 27.6" x 40" (735 mm x 700 mm x 1017 mm)
	<b>Weight</b>	Printer: 95.4 lbs (43.3 kg) with consumables; Shipping: 126 lbs (57.1 kg)
	<b>Operating environment</b>	Temperature: 60°F to 90°F (16°C to 32°C); Relative humidity: 8% to 80% RH, non-condensing; Altitude: ≤ 9,500 ft (2,896 m)
	<b>Storage</b>	Temperature: -40°F to 110°F (-40°C to 43.3°C); Relative humidity: 8% to 80% RH, non-condensing; Altitude: ≤ 34,000 ft (10,300 m)
	<b>Acoustics</b>	Printing (simplex mode): ≤ 58 dBA <sup>5</sup> ; Standby mode: ≤ 33 dBA <sup>5</sup>
<b>Power specifications</b>	<b>Voltage</b>	
	120 VAC model	100 to 127 VAC at 47 to 63 hertz (Hz) nominal
	<b>Power consumption</b>	Ready mode: 110W (Default), 55W (Eco); Simplex mode: 925W; Duplex mode: 725W Power Saver sleep mode: 15W; Power Saver deep sleep mode: 0.7W, Off mode: 0W
	<b>Typical energy consumption</b>	7.5 kWh/week
<b>Environmental compliance</b>	ErP lot 4 and 6, RoHS-compliant <sup>6</sup> , ENERGY STAR <sup>®</sup> qualified <sup>7</sup> , Blue Angel (Germany), WEEE	
<b>Supported languages</b>	English, French, German, Italian, Spanish, Danish, Norwegian, Dutch and Swedish	
<b>Product certifications</b>	<b>Safety certifications</b>	IEC60950/EN60950/UL60950; IEC60825-1/EN 60825-1:2007 (Laser); CE Mark (EU); NEMKO (Nordic); GS Mark (Germany); UL/cUL Listed (UL60950-1 US/Canada); FDA/DHHS (21CFR, Chapter 1, Subchapter J, Class-1 Laser, US); NOM (Mexico); other safety approvals required by individual countries
	<b>Other certifications</b>	EN55022:2006 + A1:2007 Class B, EN61000-3-2:2006 + A1:2009 + A2:2009, EN61000-3-3:2008, N55024:1998 + A1:2001 + A2:2003, FCC CFR Title 47, Part 15 Class B (USA); ICES-003, Issue 4 (Canada) and other certifications required by individual countries.
<b>Contents in box</b>	Dell B5465dnf Mono Laser Multifunction Printer, Ship-With 25,000-page yield <sup>8</sup> Black Cartridge, Power cord, Quick Setup Sheet, Software and Instructions CD, Use and Return Tech Sheet, Product Information Guide, Stability Sheet, RJ-11 Phone Cable, Blue Angel Tech Sheet (Europe only), NOM Tech Sheet (US only), European Voluntary Agreement Information Sheet (Europe and TAA 220v only)	

1. Measured in accordance with ISO IEC 27434 methodology. Actual print speeds will vary with use.

2. 1 MB means 1 million bytes, 1 GB means 1,000 megabytes or 1,000,000,000 bytes; total accessible capacity varies depending on operating environment.

3. Duty cycle is defined as the maximum number of imaged outputs a device could deliver in a month. This metric provides a comparison of robustness in relation to other Dell printers and multifunction printers.

4. The printer and the mobile device must be connected to the same wireless network.

5. Tested in accordance with ISO 7779 and reported in accordance with ISO 9296. Acoustics - Declared noise emission values of computer and business equipment

6. Meets the requirements of the EU Directive on the Restriction of the use of certain Hazardous Substances dated January 27, 2003.

7. For details on energy efficiency of ENERGY STAR<sup>®</sup> qualified products, refer to: [www.energystar.gov](http://www.energystar.gov)

8. Toner yield based on testing in accordance with ISO/IEC 19752. Yields vary with usage and environmental conditions.



The power to do more