

HL-3140CW

brother®
at your side

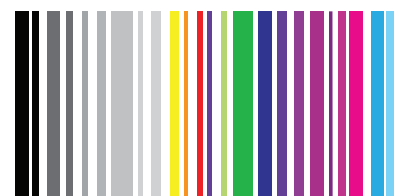


**THE BRILLIANCE OF COLOUR
IN ONE COMPACT DESIGN** 



The HL-3140CW is the high speed, high quality colour printer offering wireless connectivity to suit your office needs.

www.brother.eu



INVESTING IN COLOUR

can give your company a real advantage in today's economic climate.

Ideas look brighter, pitches more impactful and every piece of communication makes your business stand out.

With high resolution prints and wireless networking, the HL-3140CW will be one of the smartest investments you and your company make.



HL-3140CW

The HL-3140CW is packed with a range of innovative features designed to deliver high quality performance for the busy office.



Compact

Ideal for small, stylish and busy places.



Fast

Full colour print speeds of up to 18ppm.



Wireless

Save resources and share across your wireless network.



Reliable

The HL-3140CW delivers consistent print quality and performance.



Mobile

Use Apple AirPrint or Google Cloud Print™ to print straight from your iPhone, iPad or Android™ device.



Flexible

Minimise the time you spend replenishing paper with the 250 sheet paper tray.



Quality

Create professional business documents with High Definition colour.



Save

Reduce print costs with optional high yield colour toner cartridges for a lower cost per page.



HL-3140CW Technical Specifications

As an integral model in Brother's new LED colour range, the HL-3140CW is our smallest ever colour LED printer. Packed with new technology the HL-3140CW offers a wide range of features, designed with you and your business in mind, combined into a sleek, compact machine perfect for your office space.

The HL-3140CW embraces a range of new mobile features. Print directly from your mobile device with Apple AirPrint or Google Cloud Print™. Print speeds of up to 18ppm (colour and mono) mean you will not be kept waiting for your documents.

Reduce your total print costs: The HL-3140CW offers high yield colour toner cartridges, with yields of up to 2,200 pages for a lower cost per page, whilst maintaining high print quality for professional looking documents. All Brother Colour LED printers incorporate separate toners and drums, reducing waste and saving you money.

The HL-3140CW complies with the strict Blue Angel and ENERGY STAR environmental standards and ensures low energy consumption, low noise levels and a recycle-friendly design.

General

Technology	Electrophotographic LED Printer
Processor	333MHz
Memory	64MB
Local Interface	Hi-Speed USB 2.0
Wireless Network Interface	IEEE 802.11b/g/n
LCD Display	16 characters x 1 line
Mobile Connectivity	AirPrint, Google Cloud Print™ & Wi-Fi Direct™
Easy Wireless Setup	Wi-Fi Protected Setup™ (WPS) & AirStation OneTouch Secure System™ (AOSS)



Colour Printer

Print Speed (A4)	Up to 18ppm (pages per minute) colour & mono
Resolution	2,400dpi (2,400 x 600dpi), 600 x 600dpi
Print Languages	GDI (host based)
FPOT (First Print Out Time)	Less than 16 seconds colour & mono from ready mode
Warm Up Time	Less than 24 seconds from sleep mode

Paper Handling

Paper Input	250 sheet standard paper tray 1 sheet manual feed slot 100 sheets face down
Paper Output	1 sheet face up (straight paper path)
Media Type	Standard Tray - Plain & recycled paper (between 60 - 105g/m ²) Manual Feed Slot - Plain, recycled, glossy & bond paper (between 60 - 163g/m ²)
Media size	Standard Tray - A4, Letter, B5 (JIS), A5, A5 (Long Edge), A6, Executive, Legal, Folio Manual Feed Slot - Width: 76.2mm to 216mm x Length: 116mm to 355.6mm
Envelope & Label Printing	Yes, from manual feed slot (accuracy & reliability will depend on the quality & type of media used)

Supported Operating Systems

Windows®	Windows 8® (32 & 64 bit editions), Windows 7® (32 & 64 bit editions), Windows Vista® (32 & 64 bit editions), Windows XP Professional (32 & 64 bit editions), Windows® XP Home Edition, Windows® Server 2008 R2, Windows® Server 2008 (32 & 64 bit editions), Windows® Server 2003 (32 & 64 bit editions)
Macintosh	Mac OS X 10.6.8, 10.7.x, 10.8.x
Linux	CUPS, LPD/LPRng (x86/x64 environment)

Windows Printer Driver Functions

N-up Printing	Reduce up to 2, 4, 9, 16 or 25 A4 pages into just one A4 page (also supported by Mac)
Poster Printing	Enlarge 1 A4 page into a poster using 4, 9, 16 or 25 A4 pages
Watermark Printing	Add predefined text to your documents as a watermark
ID Printing	Add identification to your printed documents
Booklet Printing	Print documents in A5 booklet format
Skip Blank Page	Ignores any blank pages in your documents
Print Text in Black	Converts all text in your documents to black when printed

Supplies

Inbox Toners	1,000 pages ¹
Standard Toners	TN-241BK - 2,500 pages ¹ TN-241C/M/Y - 1,400 pages ¹ TN-245C/M/Y - 2,200 pages ¹
High Yield Colour Toners	DR-241CL - 15,000 A4 pages
Drum	BU-220CL - Up to 50,000 pages
Belt	WT-220CL - Up to 50,000 pages
Waste Toner Box	



Weights & Dimensions

With Carton	597 (W) x 521 (D) x 364(H) mm 21kg
Without Carton	410 (W) x 465 (D) x 240 (H) mm 17.4kg

Environment

TEC Value	0.9kWh / week
Power Consumption	335W active, 60W ready, 5.5W sleep, 0.57W deep sleep, 0.05W power down
Sound Pressure	53dBa active, 33dBa ready
Sound Power	6.31B active, 4.15B ready
Power Save	Consume less energy when not in use
Toner Save	Reduces toner usage

Duty Cycle

Recommended Monthly Print Volume	300 to 1,500 pages
Maximum Monthly Volume ³	Up to 30,000 pages



¹Approx. declared yield value in accordance with ISO/IEC19798

²Vertical x horizontal

³Maximum number of printed pages per month and can be used to compare designed durability between like for like Brother products.

For maximum printer life, it is best to choose a printer with a duty cycle that far exceeds your print requirements



brother
at your side



cool^{ee}earth

Brother UK Ltd, Audenshaw, Manchester M34 5JD
Tel:+44(0)8444 999 444 Fax:+44(0)161 931 2218
Web: www.brother.co.uk

All specifications correct at time of printing. Brother is a registered trademark of Brother Industries Ltd. Brand product names are registered trademarks or trademarks of their respective companies.